

## Manor Road, W13

£575,000

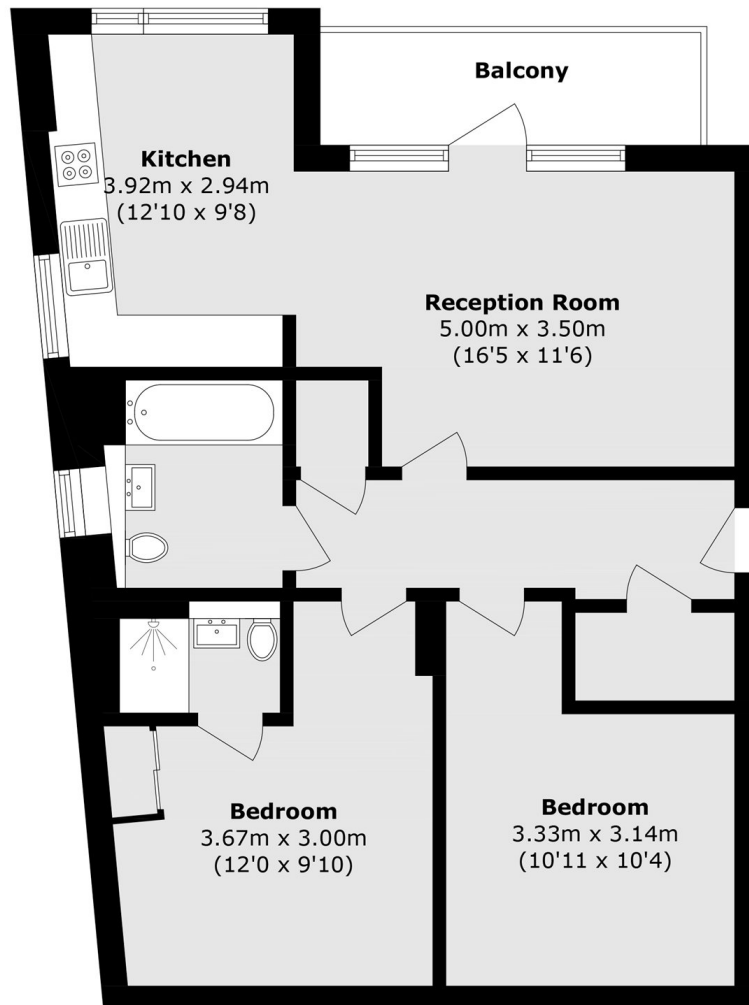
A well-presented two-bedroom, two-bathroom purpose-built apartment offered to the market with no onward chain. Built in 2016, this modern development benefits from secure gated access and a private balcony with attractive views overlooking Drayton Green.

Ideally situated just moments from the Waitrose & Partners West Ealing and West Ealing railway station, providing excellent transport links via the Elizabeth line. The property is also perfectly positioned for families, with highly regarded schools nearby including Drayton Manor High School and St John's Primary School.

### Features

- Two Bedrooms
- Two Bathrooms
- Balcony
- Close To Station
- Newly Constructed
- No Onward Chain

# Manor Road, London, W13



Total area (approx.): 74.4 sq. m (800.8 sq. ft)  
Balcony area (approx.): 5.7 sq. m (61.4 sq. ft)