



41 Parkhead Avenue

Parkhead, Edinburgh, EH11 4SF



VMH ESTATE AGENTS



Bright upper villa situated in the popular Parkhead area, ideal for a first time buyer

- Sitting room
- Well-appointed kitchen
- 2 double bedrooms
- Bathroom
- Private garden area
- Bright & well proportioned
- Ideal for a first time buyer
- Excellent location close to amenities
- Well presented & in move in condition
- Gas central heating & double glazing



Fixed Price

£175,000



Further information can be found in the home report.

About the Property

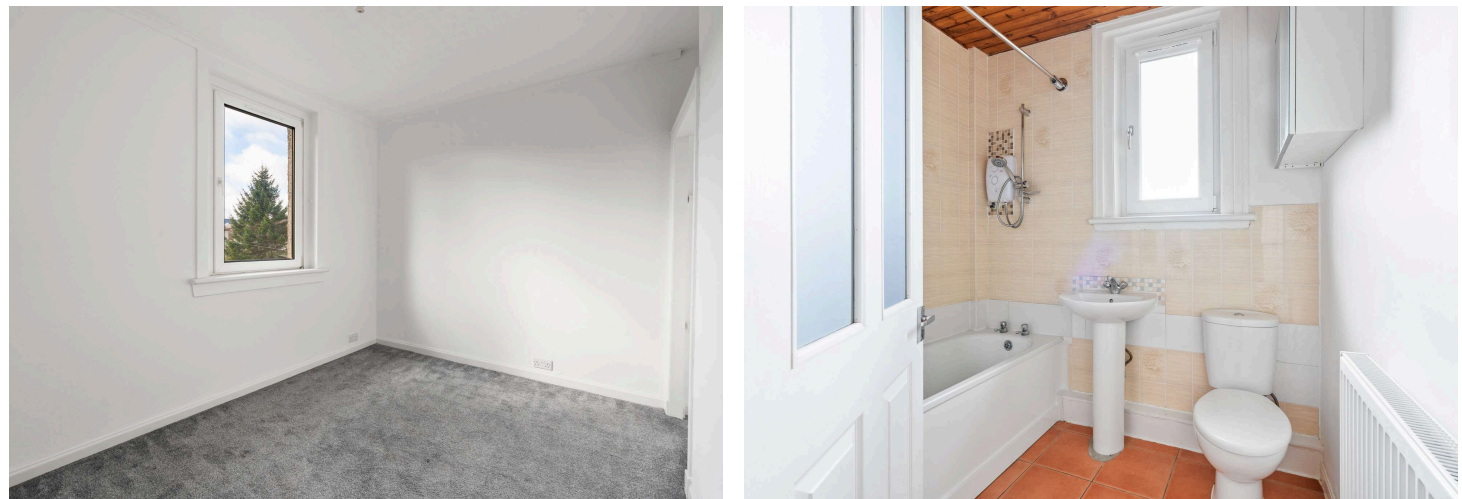
Located in the popular residential area of Parkhead, this 2 bedroom upper flat offers an ideal home for a first-time buyer.

Internally the property is spacious and well presented throughout having been freshly decorated for sale.

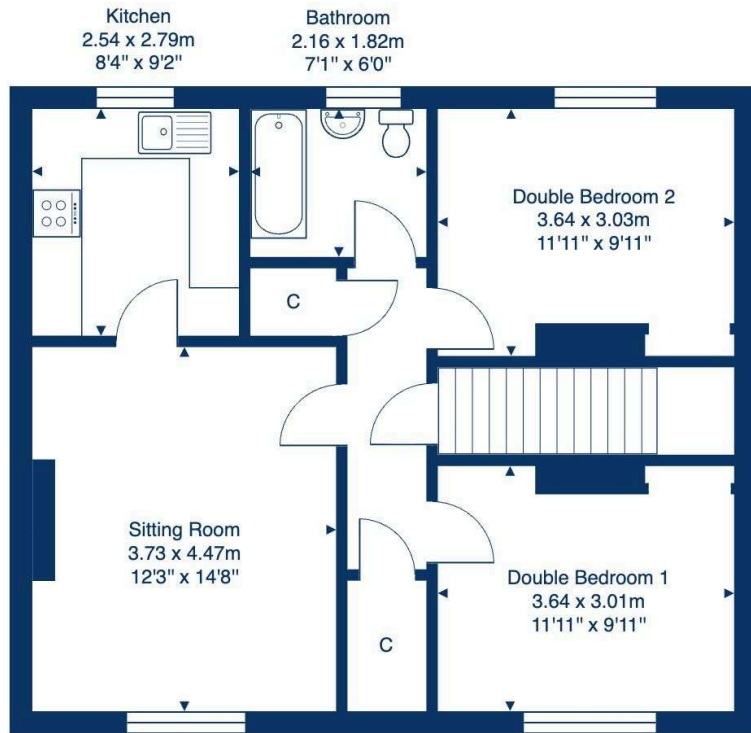
Further benefits include gas central heating, double glazing, a private garden area to the rear and unrestricted on street parking.
Location

Extras

All fitted floor carpets, oven, hob, extractor hood, fridge/freezer, washing machine and dishwasher.



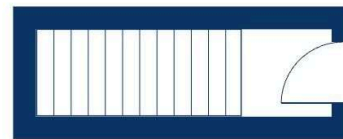
41 Parkhead Avenue, Edinburgh, EH11 4SF



First Floor

Total Area: 66.4 m² ... 714 ft²

All measurements are approximate and for display purposes only.



Ground Floor



Location

Parkhead is an established residential area to the west of Edinburgh City Centre, conveniently located close to Napier University & Edinburgh College's Sighthill campus and within easy reach of Heriot Watt. A variety of local shops and services provide for day to day needs with Sainsbury's supermarket close by at Longstone. Regular local bus services provide swift access to the city centre and surrounding areas and by car the central motorway network, city bypass and airport are all within easy reach. Local schooling is available from nursery to secondary level and a variety of recreational facilities are close at hand including a choice of gyms and the Odeon Luxe Cinema at the Westside Plaza shopping complex.





VMH ESTATE AGENTS



VMH SOLICITORS

More is our middle name.

Registered Office: 8 Sibbald Walk, Edinburgh, EH8 8FT

 **0131 622 2626**

 **property@vmh.co.uk**

 **vmh.co.uk**

 **DX: 552210, Edinburgh 68**

The dimensions provided are for illustration purposes only; detailed measurements should be taken personally. No documentation will be exhibited in respect of the compliance or otherwise of replacement windows. Although every attempt has been taken to ensure accuracy, the details within the brochure are not guaranteed or warranted and will not form part of any future contract to buy.