



21 Ashwell Street, Netherfield - NG4 2FQ

Guide Price £240,000-£250,000



21 Ashwell Street

Netherfield, Nottingham

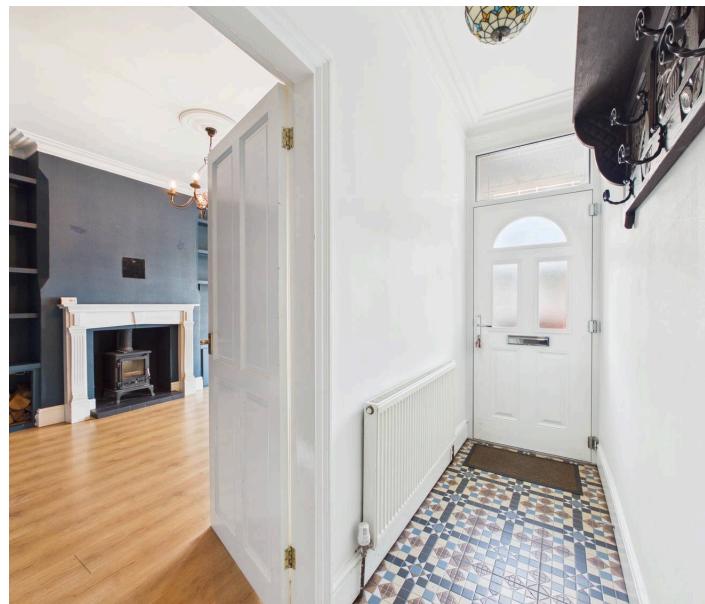
GUIDE PRICE £240,000–£250,000 Charming 3-storey mid-terrace home offered with no chain! Convenient location, 4 versatile bedrooms and 2 reception rooms. Viewing recommended! Council Tax band: A

Tenure: Freehold

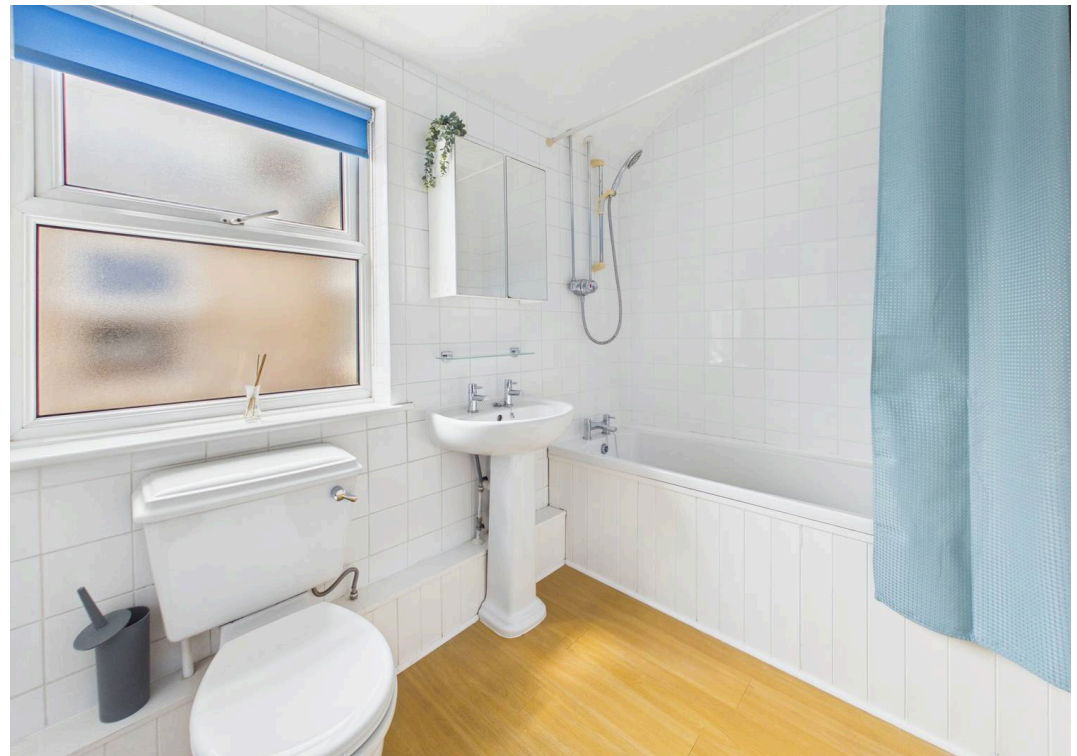
EPC Energy Efficiency Rating: D

EPC Environmental Impact Rating: D

- Charming three-storey mid-terrace house
- Offered to the market with no upward chain
- Excellent amenities and transport links close by
- Entrance hall with traditional style flooring
- Two characterful reception rooms
- Modern kitchen with ample storage
- Four bedrooms (three doubles and a versatile fourth bedroom/dressing room)
- Bathroom/WC with white suite and mains shower
- Low-maintenance and south-easterly facing rear garden with decking area
- Viewing highly recommended

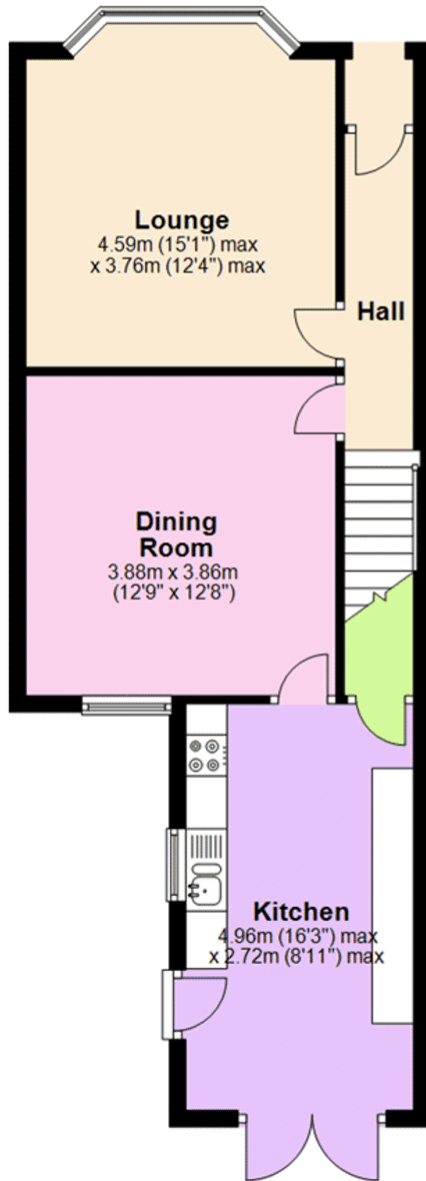






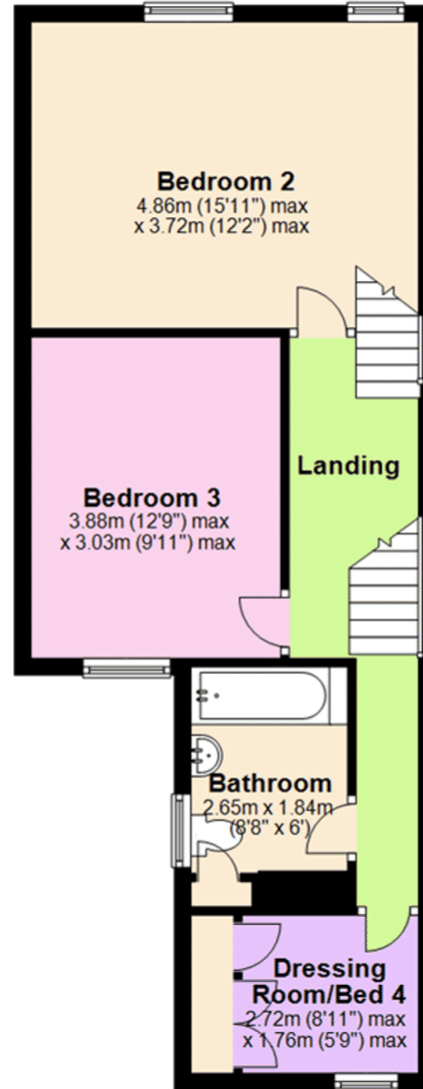
Ground Floor

Approx. 51.1 sq. metres (550.1 sq. feet)



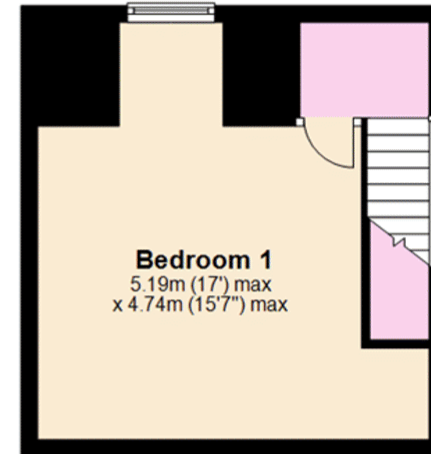
First Floor

Approx. 50.4 sq. metres (543.0 sq. feet)



Second Floor

Approx. 23.9 sq. metres (257.3 sq. feet)



Total area: approx. 125.5 sq. metres (1350.4 sq. feet)



David James Estate Agents

376 Carlton Hill, Carlton - NG4 1JA

0115 987 8957 • carlton@david-james.com • www.david-james.com

These particulars are produced in good faith and are set out as a general guide only. Measurements are approximate and floor plans are for illustrative purposes only. Services have not been tested. We have established professional relationships with third-party suppliers for the provision of services to Clients, details of which can be found on the property listing page on our website.