

Henry Road, Brixton, SW9

2 bedroom flat - purpose built for sale

£575,000

Leasehold

Property Details

This beautifully arranged two-bedroom, two-bathroom apartment is situated on the first floor of a modern purpose-built development and benefits from a private balcony, multiple Juliet balconies, and a secure allocated parking space within a gated courtyard. Finished to a high contemporary standard throughout, the property centres around a generous open-plan kitchen and reception room, filled with natural light and opening onto a covered balcony overlooking the park. The sleek kitchen features white gloss handleless cabinetry, integrated appliances, and ample storage, while the reception area comfortably accommodates both lounge and dining areas. The principal bedroom enjoys a Juliet balcony, built-in storage, and a stylish en-suite shower room. A versatile second bedroom also benefits from a Juliet balcony and is ideal as a guest room, nursery, or home office. The modern family bathroom features contemporary tiling and a full-sized bath with shower overhead. A spacious hallway with additional storage enhances practicality, while excellent energy efficiency, secure bike storage, and well-maintained communal areas complete this attractive home.

Features

- Two bedrooms
- Two bathrooms
- South-facing private terrace plus Juliette balconies
- Allocated gated parking space
- Secure modern development with residents' bike storage
- Well-presented throughout
- Excellent transport links
- Brixton, Stockwell and Oval all a fifteen-minute stroll
- Overlooks Eythorne Park and an eight minute walk to Myatt's Fields Park
- Short walk to the Victoria and Northern Lines

Council tax band D EPC rating B (84)



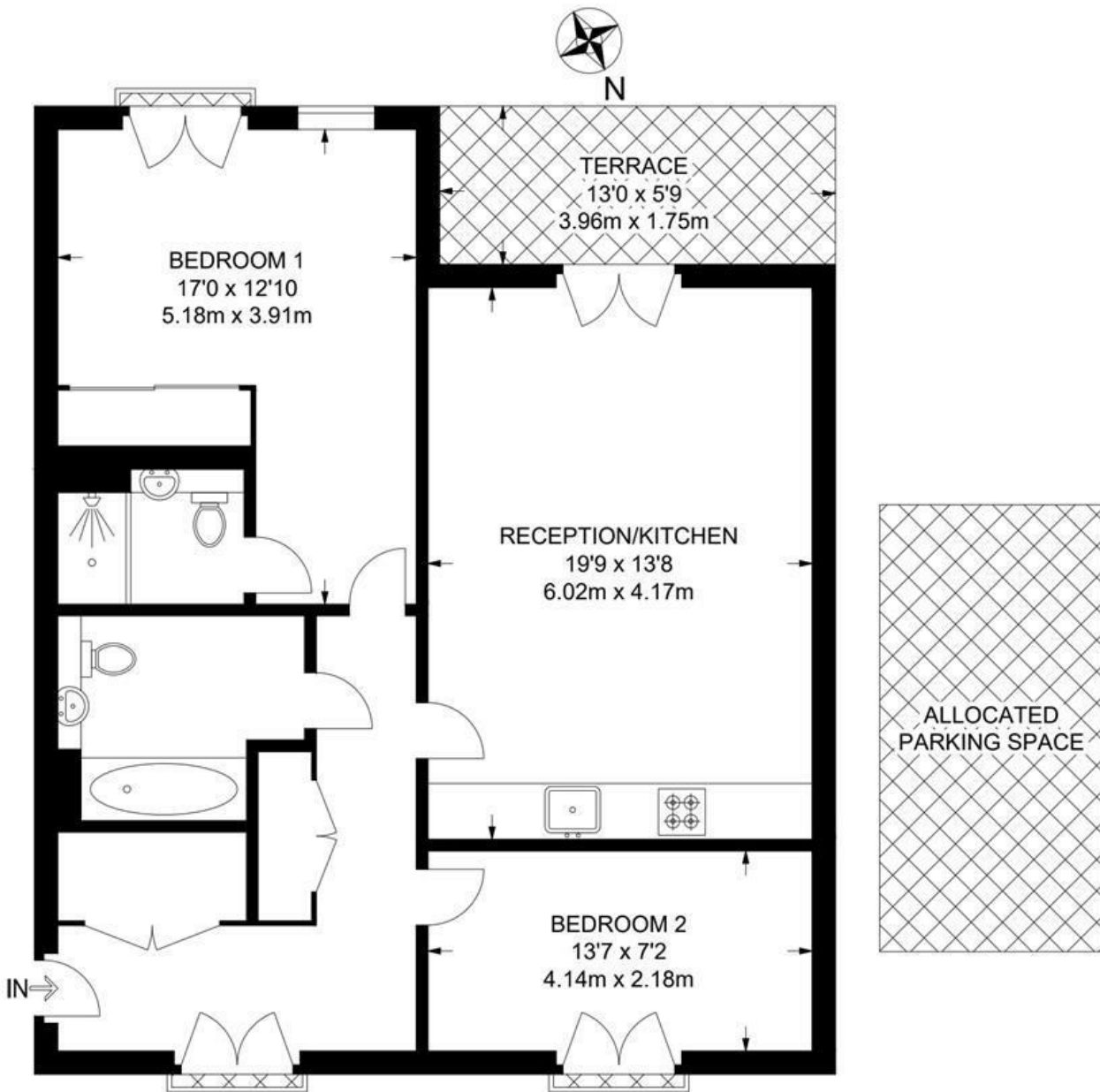


Henry Road, Brixton, SW9

Henry Road, SW9

2 Bedroom Flat

APPROXIMATE GROSS INTERNAL AREA: 812 SQ FT / 75.4 SQ M



FIRST FLOOR



While we try our very best, floor plans are produced as a guide only and we take no responsibility for the precise accuracy with which any property is represented.

Henry Road, Brixton, SW9

