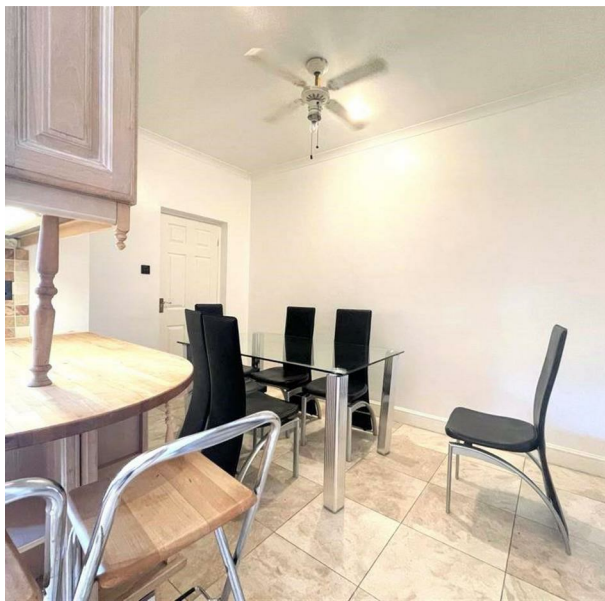


23 Monmouth Avenue, South Woodford, Greater London, E18 1NU  
£3,600 Per Month



23 Monmouth Avenue, South Woodford, Greater London, E18 1NU

£3,600 Per Month

Council Tax Band: F

Nestled in the charming area of South Woodford, E18, this impressive six-bedroom house is now available to let for £3,600 per calendar month. This older property boasts a wealth of character and space, making it an ideal family home or a perfect choice for those seeking ample room for guests or a home office.

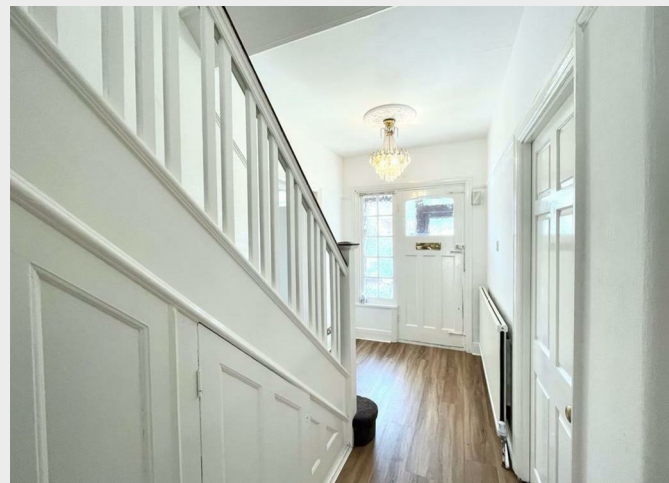
Upon entering, you will find two generously sized reception rooms, providing versatile spaces for both relaxation and entertaining. The layout is designed to accommodate modern living while retaining a sense of warmth and comfort. The six bedrooms offer plenty of room for family members or can be transformed into personal study areas, ensuring that everyone has their own space.

The property features three well-appointed bathrooms, which is a significant advantage for larger households, allowing for convenience and privacy. The combination of spacious living areas and multiple bathrooms makes this home particularly appealing for families or groups of professionals.









337 Forest Road  
 London  
 E17 5JR  
 02085277007  
 enquiries@completion.co.uk  
 completion.co.uk

