



Dunelm Street, London, E1

Occupying the second floor of this pub conversion, is this well designed, two bedroom, two bathroom apartment.

The property has been recently developed and offers its residents, two large bedrooms with no adjoining wall, two bathrooms, both bedrooms have built in wardrobe space. and built in storage in the hallway.

The reception/kitchen is open plan, South facing and overlooks the corner of Dunelm Street and Aylward Street.

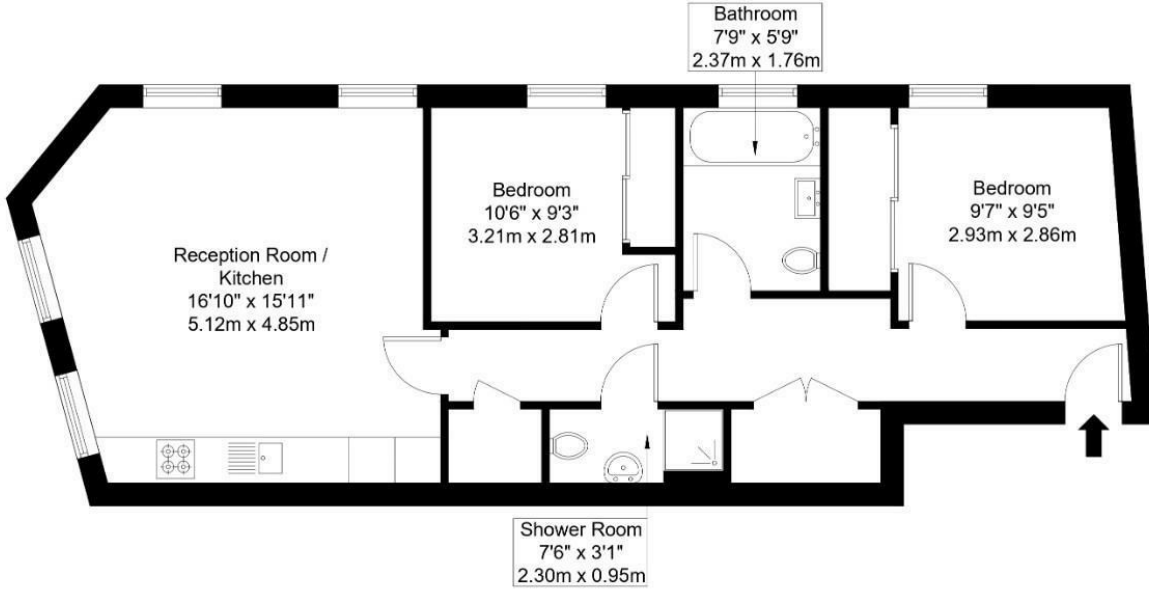
Served by Stepney Green, Limehouse and Whitechapel stations, this modern apartment is available on an unfurnished basis and offered on a long let.

- Two bedrooms
- Two bathrooms
- Open plan reception/kitchen
- Fully integrated kitchen
- Second floor
- Close to Stepney Green Park
- Communal roof terrace
- Car free development

£2,500 Per month

Dunelm Street, E1 0QQ

Approx Gross Internal Area = 64.41 sq m / 693 sq ft

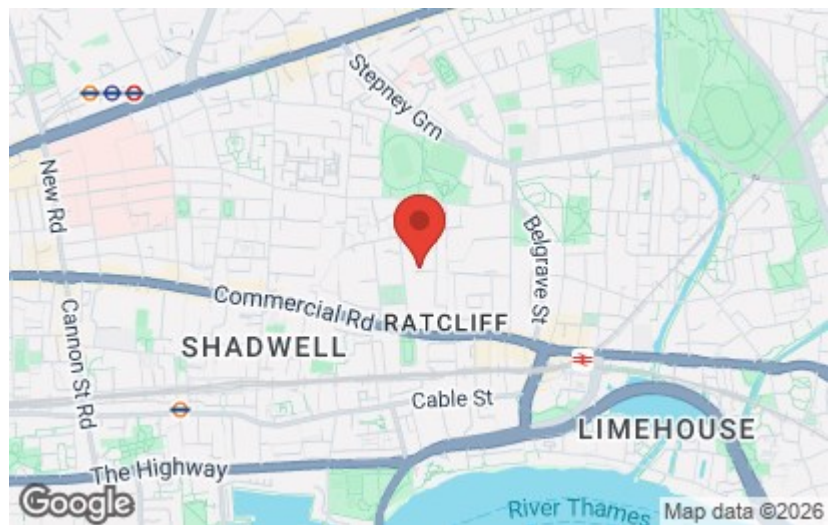


Second Floor

Ref :

Copyright **BLEU PLAN**

The floor plan is to scale and measurements and areas shown are approximate and therefore should be used for illustrative purposes only. The plan has been prepared in accordance with the RICS code of Measuring Practice and whilst we have confidence in the information produced, it must not be relied on. Maximum lengths and widths are represented on the floor plan. If there is any aspect of particular importance, you should carry out your own inspection of the property.
Copyright @ BLEUPLAN



Energy Efficiency Rating		Current	Potential
Very energy efficient - lower running costs	(92 plus) A		
(81-91) B			
(69-80) C			
(55-68) D		62	62
(39-54) E			
(21-38) F			
(1-20) G			
Not energy efficient - higher running costs			
England & Wales		EU Directive 2002/91/EC	

Environmental Impact (CO ₂) Rating		Current	Potential
Very environmentally friendly - lower CO ₂ emissions	(92 plus) A		
(81-91) B			
(69-80) C			
(55-68) D			
(39-54) E			
(21-38) F			
(1-20) G			
Not environmentally friendly - higher CO ₂ emissions			
England & Wales		EU Directive 2002/91/EC	