

Southfields, London – NW4 4NA

£1,100,000 Freehold

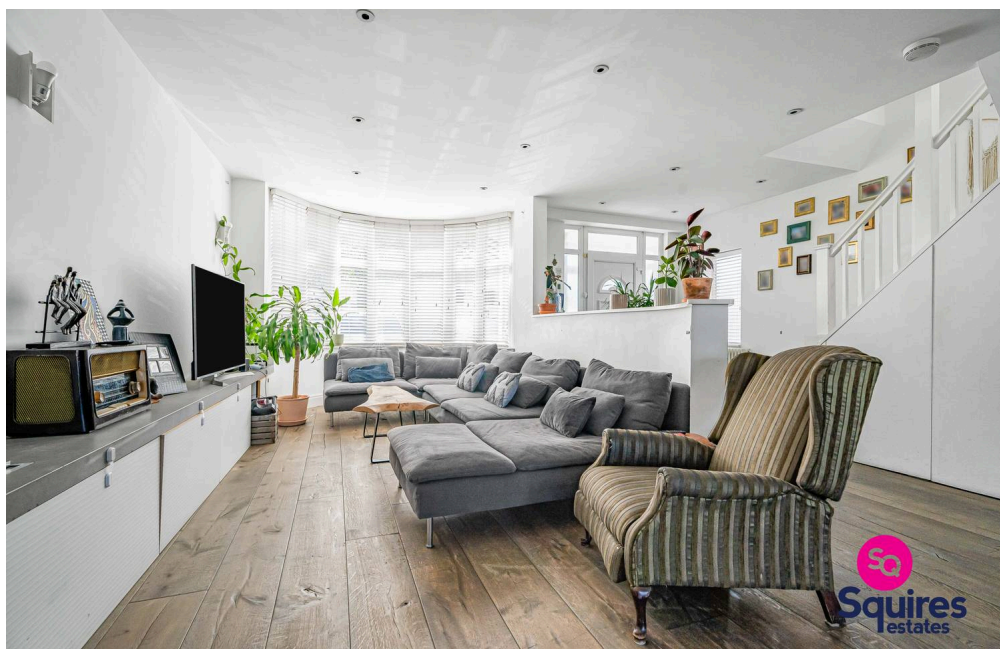
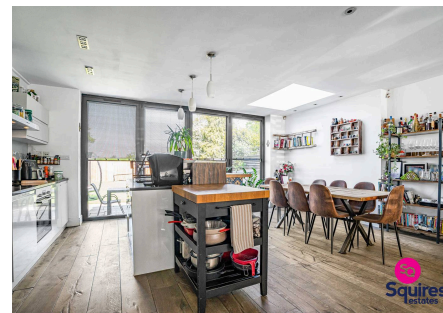
CHAIN FREE A fantastic, extended 4 bedroom semi-detached house situated within this popular turning in Hendon. The property features a 38ft open-plan living space on the ground floor with direct access to a large patio and garden with artificial grass and a gate to Sunny Hill Park. Further benefits include a 21ft master bedroom with fitted wardrobes and modern en-suite shower room on the top floor, 3 bedrooms on the first floor including two large doubles, a spacious family bathroom, lovely views across the park and off street parking. The house would make an ideal family home.

Council Tax band: E

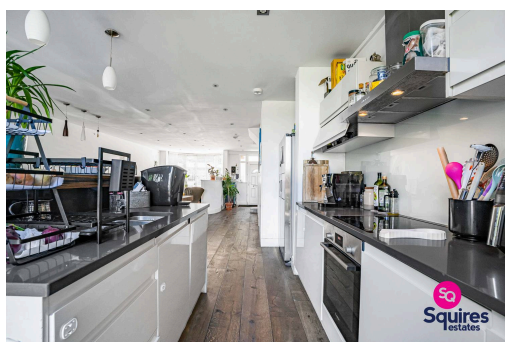
Tenure: Freehold

EPC Energy Efficiency Rating: D

EPC Environmental Impact Rating: E



- › Semi-detached
- › 4 bedrooms
- › 2 bathrooms (1 en-suite)
- › Large patio and garden
- › Off street parking
- › Park views to the rear
- › Open-plan ground floor
- › Ground floor W.C.
- › Chain free
- › Ideal family home



Approximate Gross Internal Area 1659 sq ft - 155 sq m
Ground Floor Area 709 sq ft - 66 sq m
First Floor Area 557 sq ft - 52 sq m
Second Floor Area 393 sq ft - 37 sq m

