

## Cromwell Road, SW7

### £330,000

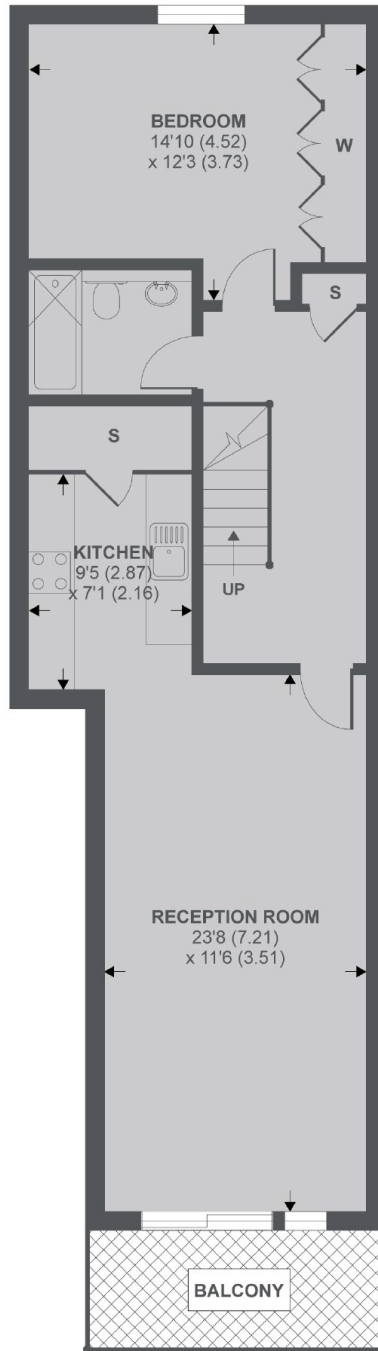
A large one bedroom apartment located on the sixth floor of a purpose build block with porter, sold with an underground parking space. The property offers an abundance of light throughout and has a large, west facing balcony off the reception.

Point West is a desirable apartment building close to the shops, cafés and amenities of Gloucester Road and South Kensington. This property benefits from great transport links across London as well as easy access to the A4.

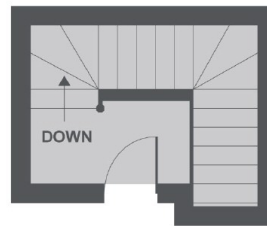
### Features

- One Bedroom
- One Bathroom
- Balcony
- Lift
- Underground Parking Space
- Gloucester Road Station

# Cromwell Road, London, SW7



**5th Floor**



**6th Floor**

APPROX FLOOR AREA 771 SQ.FT 71.6 SQ.M

Copyright nichecom.co.uk 2019 REF : 512701