

DIRECT



MOVES



St. Lawrence Road

, Weymouth DT3 5NF

- Two double bedrooms
- Village location in Upwey
- Large kitchen space
- Sold as seen, some modernisation needed
- 28 day exchange required
- First floor apartment
- Private garden included
- On-road parking available
- new 125 year lease
- Viewing recommended

£125,000 Leasehold





Entrance

Private UPVC front door opens onto stairs to first floor and onto hallway with doors to all rooms

Living Room

15'5" x 10'9"

Large side aspect reception room with UPVC double glazed window, wall mounted radiator and power points

Kitchen

13'9" x 11'9"

large side aspect kitchen with range of eye and base level units. Space for white goods. cupboard housing wall mounted combi-boiler

Bathroom

8'10" x 5'10"

Side aspect bathroom. suite comprises panel enclosed bath with shower over and glass shower screen, low level WC and hand wash basin.

Bedroom One

12'1" x 10'9"

Side aspect double bedroom

Bedroom Two

12'9" x 10'5"

Side aspect double bedroom

Corporate Sale

This property is a corporate sale, please ask us for a copy of "What to expect from a corporate Sale" document, some features found below:

28 day exchange required

Property sold as seen

limited maintenance documents available

Service Charge of £20-£150 per year unless otherwise stated inc Freehold

Application for external works required

Leaseholds will be new 125 year lease on completion.

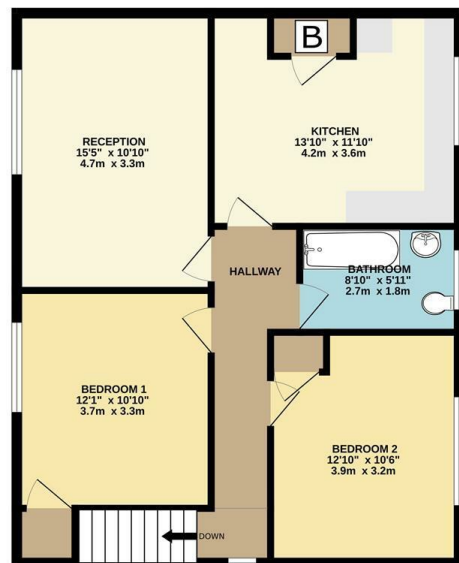
Disclaimer

Direct Moves Estate Agents make no representations or warranties regarding the accuracy, completeness, or reliability of the property details provided. These details are for informational purposes only and should not be relied upon in any way. The information is not intended to form part of any contract and does not constitute an offer or guarantee by Direct Moves.

Should you wish to proceed with an offer on this property, we are obligated by HMRC to conduct mandatory Anti-Money Laundering Checks. We outsource these checks to our compliance partners at Coadjute and they charge a fee for this service.

Local Authority
Council Tax Band **A**
EPC Rating **C**

GROUND FLOOR



Whilst every attempt has been made to ensure the accuracy of the description contained herein, measurements of floors, windows, doors and any other items are approximate and no responsibility is taken for any error, omission or mis-statement. This plan is for illustrative purposes only and should be used as such by any prospective purchaser. The services, systems and appliances shown hereon are not intended and no guarantee is given for their condition or reliability in use for given. Made with Metreapp 0.0.20

Direct Moves Estate Agents Office

9 Westham Road
Dorset
Weymouth
DT4 8NP

Contact

01305 778500
sales@directmoves.com
<https://directmoves.com/>

Agents Note: Whilst every care has been taken to prepare these particulars, they are for guidance purposes only. All measurements are approximate and for general guidance purposes only and whilst every care has been taken to ensure accuracy, they should not be relied upon and potential buyers/tenants are advised to recheck the measurements.