

oakheart



£150,000

Offers In The Region Of
Lees Court, Glemsford



Situated within a peaceful residential setting in the highly regarded Suffolk village of Glemsford, this well-presented two-bedroom first-floor apartment offers spacious and practical accommodation, making it an ideal purchase for first-time buyers, investors or those looking to downsize.

The property is accessed via a communal entrance and enjoys a well-balanced layout throughout. The welcoming entrance hall provides access to all principal rooms, including a generous living room offering

ample space for both seating and dining arrangements. Adjacent to the living accommodation is a fitted kitchen, featuring a range of wall and base units with space for appliances.

There are two bedrooms, including a comfortable principal bedroom and a versatile second bedroom which would also lend itself well as a home office or guest room. Completing the accommodation is a family bathroom fitted with a three-piece suite.

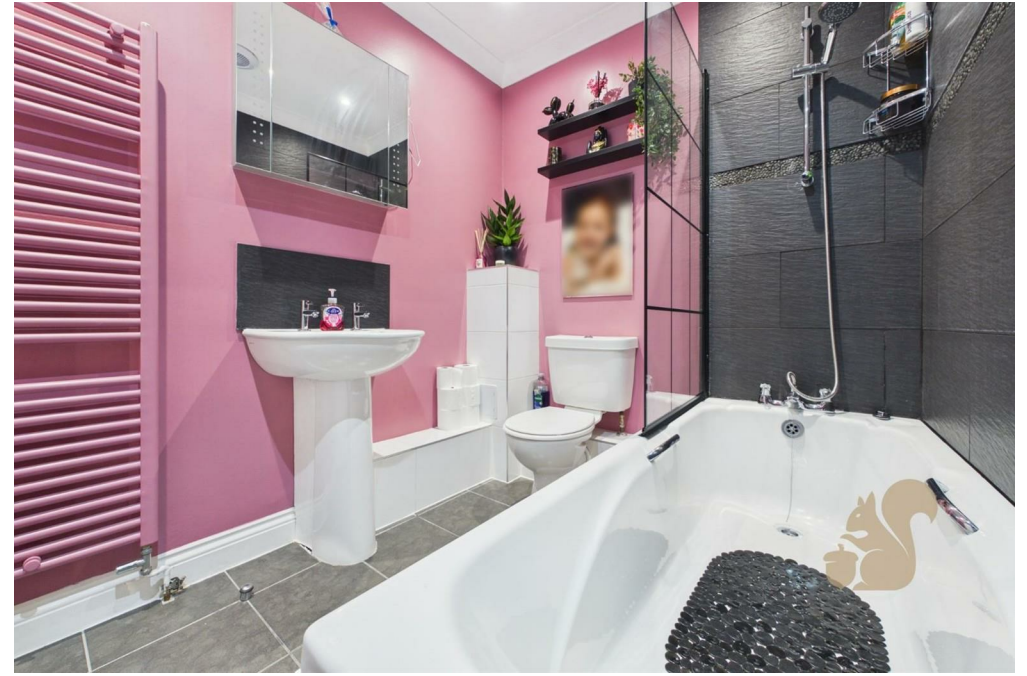
Externally, the property benefits from an allocated parking space within the communal car park.

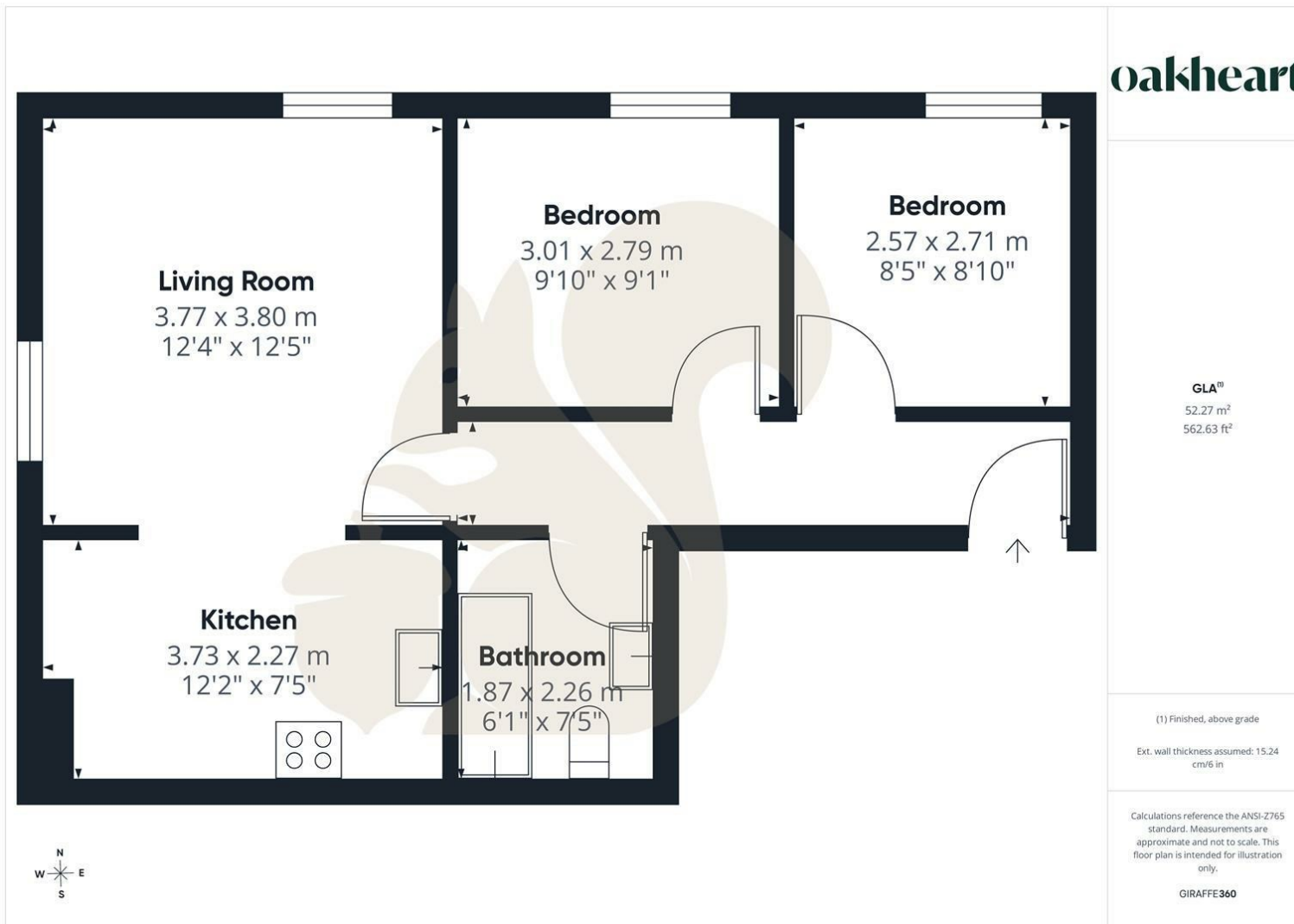
Glemsford is a popular Suffolk village offering a range of everyday amenities including shops, pubs, a primary school and recreational facilities, whilst the nearby market towns of Sudbury and Clare provide an excellent selection of further amenities and transport links.

Call Oakheart today to arrange your viewing!









Local Authority:

Tenure:
Leasehold

Council Tax Band:
A

Energy Efficiency Rating		Current	Potential
Very energy efficient - lower running costs			
(92 plus) A			
(81-91) B			
(69-80) C		79	79
(55-68) D			
(39-54) E			
(21-38) F			
(1-20) G			
Not energy efficient - higher running costs			
England & Wales		EU Directive 2002/91/EC	

Agents Note: Whilst every care has been taken to prepare these particulars, they are for guidance purposes only. All measurements are approximate and are for general guidance purposes only and whilst every care has been taken to ensure their accuracy, they should not be relied upon.