



Warwick Chambers, W8

£475,000

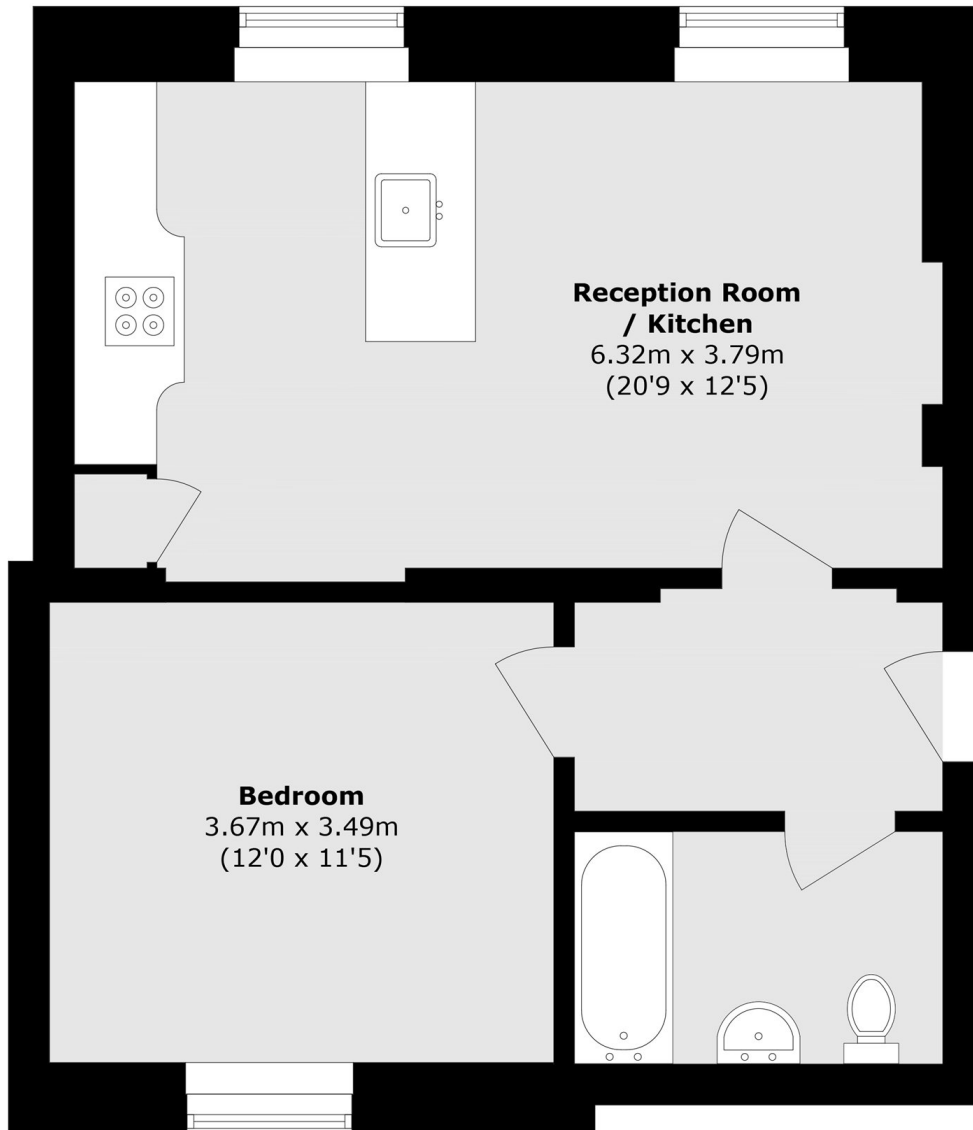
A generously sized one-bedroom lower ground floor apartment located within an intimate mansion block. The property features an open-plan layout and is filled with natural light throughout, creating a bright and airy living space. Further benefits are a large bedroom with an abundance of storage space throughout.

Pater Street is a quiet street situated just off Kensington High Street with its many excellent shops, restaurants and transport facilities- the property is also a short walk away from Holland Park.

Features

- Highly Sought After Location
- No Ongoing Chain
- Ideal First Time Purchase
- Open Plan Living
- Walking Distance Of Holland Park
- Close To Amenities

Warwick Chambers, London, W8



Total area (approx.): 48.1 sq. m (517.7 sq. ft)