

The Close

Eastcote • • HA5 1PH
Asking Price: £350,000



coopers
est 1986

The Close

Eastcote • • HA5 1PH

SHARE OF FREEHOLD UPON COMPLETION. This well-presented one double bedroom ground floor garden maisonette is set within a highly desirable cul-de-sac, just minutes' walk from Eastcote town centre with its wide range of shops, restaurants, coffee houses, supermarkets, and excellent transport links via the Metropolitan and Piccadilly Line Tube Stations.

The accommodation benefits from its own private entrance and comprises: entrance hall, bright and spacious living room, double bedroom with fitted wardrobes, a modern fitted kitchen, and a stylish shower room/WC.

Externally, the property boasts a private rear garden mainly laid to lawn, along with a driveway providing off-street parking.

Further advantages include a long lease of approximately 119 years.

Ground Floor Garden Maisonette

One Double Bedroom

Modern Fitted Kitchen

Private Garden

Long Lease

Walking Distance to Eastcote

Driveway with Off Street Parking

Modern Fitted Bathroom

Fully Refurbished

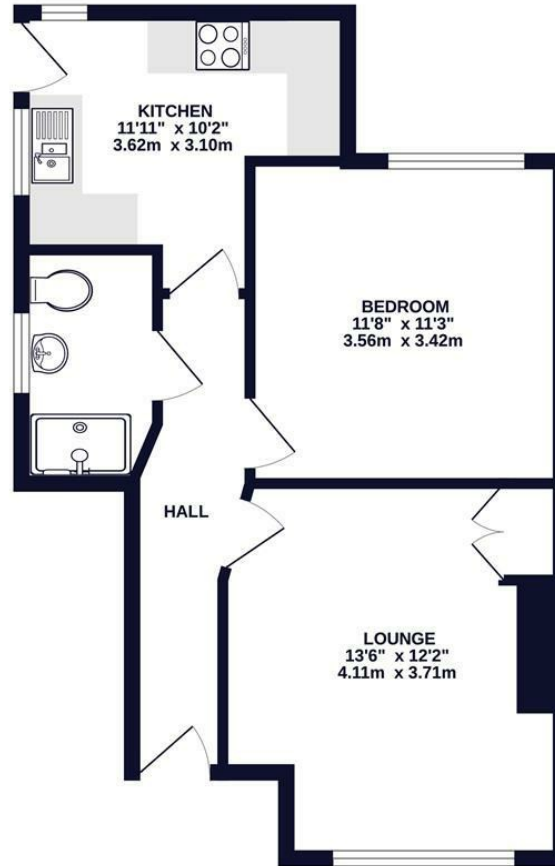
Approx 482 sq ft

These particulars are intended as a guide and must not be relied upon as statements of fact. Your attention is drawn to the Important Notice on the last page.





GROUND FLOOR
482 sq.ft. (44.8 sq.m.) approx.



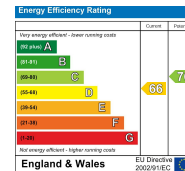
TOTAL FLOOR AREA: 482 sq.ft. (44.8 sq.m.) approx.

Whilst every attempt has been made to ensure the accuracy of the floorplan contained here, measurements of doors, windows, rooms and any other items are approximate and no responsibility is taken for any error, omission or mis-statement. This plan is for illustrative purposes only and should be used as such by any prospective purchaser. The services, systems and appliances shown have not been tested and no guarantee as to their operability or efficiency can be given.
Made with Metreplex ©2025



18 Bridge Street, Pinner,
Middlesex, HA5 3JF
pinner@coopersresidential.co.uk

CoopersResidential.co.uk



Important Notice: These particulars, whilst believed to be accurate are set out as a general outline only for guidance and do not constitute any part of an offer or contract. Intending purchasers should not rely on them as statements or representation of fact, but must satisfy themselves by inspection or otherwise has the authority to make or give any representation or warranty in respect of the property.