



Manor Farmhouse  
Moreton, Dorchester, DT2 8RF

Fowler Fortescue  
RURAL ASSET MANAGEMENT



# Manor Farmhouse

## Moreton, Dorchester, DT2 8RF

£4,000pcm

A beautifully restored and well-presented Grade II listed six bedroom detached farmhouse located in the sought after village of Moreton.

Kitchen | Dining Room | Drawing Room | Two Further Reception Rooms | Utility Room | Conservatory | Downstairs WC | Ground Floor Bedroom | Master Bedroom | Double Ensuite Bedrooms | Two Further Double Bedrooms | One Family Bathroom | Garden | Driveway | 0.75 Acres of Gardens |

### Description

Manor Farmhouse is an impressive Grade II listed detached property, offering spacious and well appointed accommodation across two floors.

The ground floor comprises a welcoming entrance hall, a traditional farmhouse kitchen featuring an Aga and ample storage, a spacious lounge with open fireplace, a bright dining room with log burner, utility room, and WC. A sixth bedroom is also located on the ground floor.

The first floor provides five further bedrooms, including a generous principal suite with walk in wardrobe and en-suite shower room. A second bedroom also benefits from an en-suite shower room, whilst the remaining bedrooms are served by a spacious family bathroom.

Externally, the property is set within 0.75 acres of mature grounds and offers excellent opportunities for entertaining, gardening, and family enjoyment, all whilst benefiting from the tranquillity of its rural surroundings.

### Situation

Moreton offers an excellent range of local amenities including a village shop, public house, café, primary school, church, and railway station with direct services to Dorchester, Weymouth, Bournemouth and London Waterloo. Moreton also has excellent access to highly regarded nearby schools such as Sandroyd School and Bryanston School. The county town of Dorchester is 8 miles to the west and provides a comprehensive range of shopping, educational, leisure and healthcare facilities. The stunning Jurassic Coast, a UNESCO World Heritage Site, is also within easy reach, offering beautiful beaches, coastal walks and outdoor pursuits.

t. 01747 356099 | e. [enquiries@fowlerfortescue.co.uk](mailto:enquiries@fowlerfortescue.co.uk)

The Old Dairy, Fonthill Bishop, Salisbury, Wiltshire SP3 5SH

[fowlerfortescue.co.uk](http://fowlerfortescue.co.uk)



*Kitchen*



*Living Room*



### Accommodation

The front door opens into an entrance hall

**Kitchen** a spacious farmhouse kitchen fitted with a traditional Aga, ample storage and preparation space. The room benefits from a useful larder

**Lounge** a well-proportioned reception room centred around an open fireplace

**Dining Room** a bright and spacious room with ample space for a large dining table and seating, complemented by a feature log burner

**Utility Room** fitted with space for laundry appliances and additional storage. A useful ancillary room serving the household

**Downstairs Cloakroom** with sink and WC

**Ground Floor Bedroom** a double bedroom retaining original features, including traditional shutters and a feature fireplace with log burner

### First Floor

Stairs from the main hall lead up to the first floor

**Master Bedroom** A spacious dual-aspect bedroom, benefiting from a walk-in wardrobe and en-suite shower room



**Bedroom Two** A generous double bedroom enjoying views across the surrounding countryside and benefiting from an en-suite shower room

**Bedroom Three** a twin bedroom with two single beds and views over the rear garden

**Bedroom Four** a bright and spacious double room

**Bedroom Five** a large double room overlooking the garden

**Family Bathroom** with a bath, separate shower cubicle, wash hand basin and WC

### Parking

The property is approached through a gated entrance leading to an extensive private parking area with space for multiple vehicles

### Garden

The property sits within approximately 0.75 acres of mature gardens and grounds. Predominantly laid to lawn, the gardens enjoy a private and peaceful setting with mature trees, established planting and attractive views across the surrounding countryside.

### Utilities

Mains electricity, mains water and mains drainage. Oil-fired central heating



### Services

Ofcom indicates there is Ultrafast broadband (up to 1000 Mbps) available to the property. Mobile phone signal is good outdoors. Intending tenants to satisfy themselves with broadband and mobile services, these can be found on the Ofcom checker

**Council Tax** Dorset Council, council tax band G

**EPC Rating** The property has an EPC rating of E40

**Pets** by application

**Available** from 1<sup>st</sup> October 2026

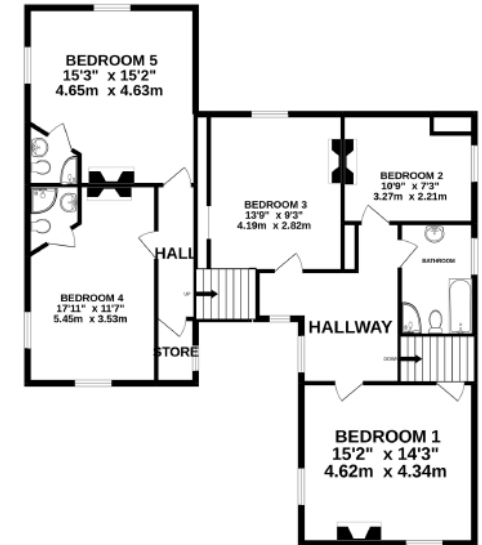
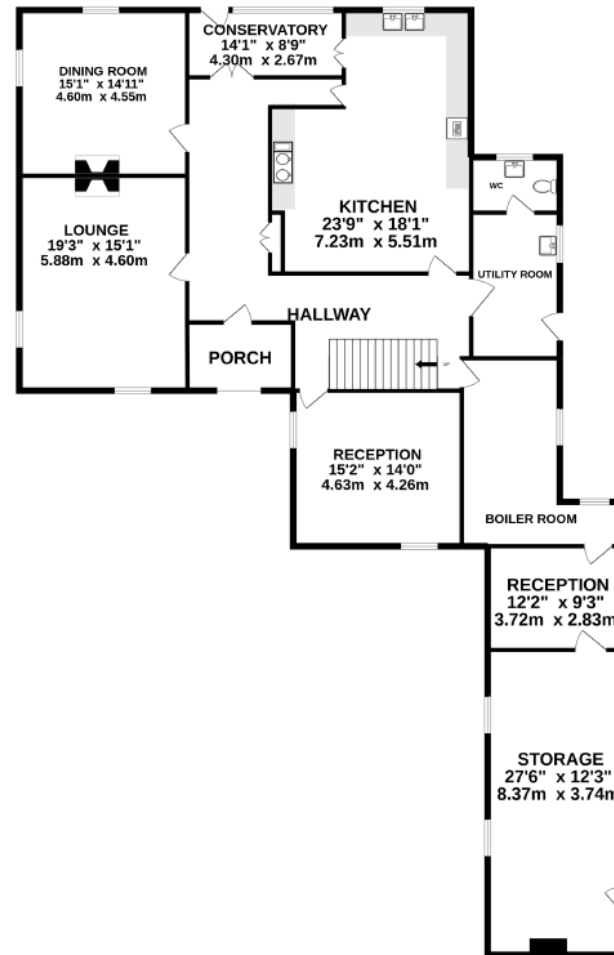
**Rent** £4,000 per calendar month payable by direct debit on the 1<sup>st</sup> of each month

**Holding Deposit** a holding deposit of £920 is payable to secure the property

**Security Deposit** £4,615 to be held under the terms of The Deposit Protection Scheme for the duration of the tenancy

**Viewing** strictly by appointment through Fowler Fortescue's office on 01747 356099

Disclaimer: These particulars are intended to give a fair description of the property but their accuracy cannot be guaranteed, and they do not constitute an offer of contract. Intending tenants must rely on their own inspection of the property. None of the above appliances/services have been tested by ourselves.



TOTAL FLOOR AREA: 3611 sq.ft. (335.4 sq.m.) approx.  
 Whilst every attempt has been made to ensure the accuracy of the floorplan contained here, measurements of doors, windows, rooms and any other items are approximate and no responsibility is taken for any error, omission or mis-statement. This plan is for illustrative purposes only and should be used as such by any prospective purchaser. The services, systems and appliances shown have not been tested and no guarantee as to their operability or efficiency can be given.  
 Made with Metropix ©2022

01747 356099 | enquiries@fowlerfortescue.co.uk

The Old Dairy, Fonthill Bishop, Salisbury, Wiltshire SP3 5SH

fowlerfortescue.co.uk

