



Mill Street, SE1

£550,000

Of historic significance, and situated in the heart of Shad Thames, this two double bedroom South West Facing flat is moments from the river, has been fully refurbished to a high specification in turn key condition, and has a large living space, modern kitchen, secure allocated parking for two cars and communal gardens.

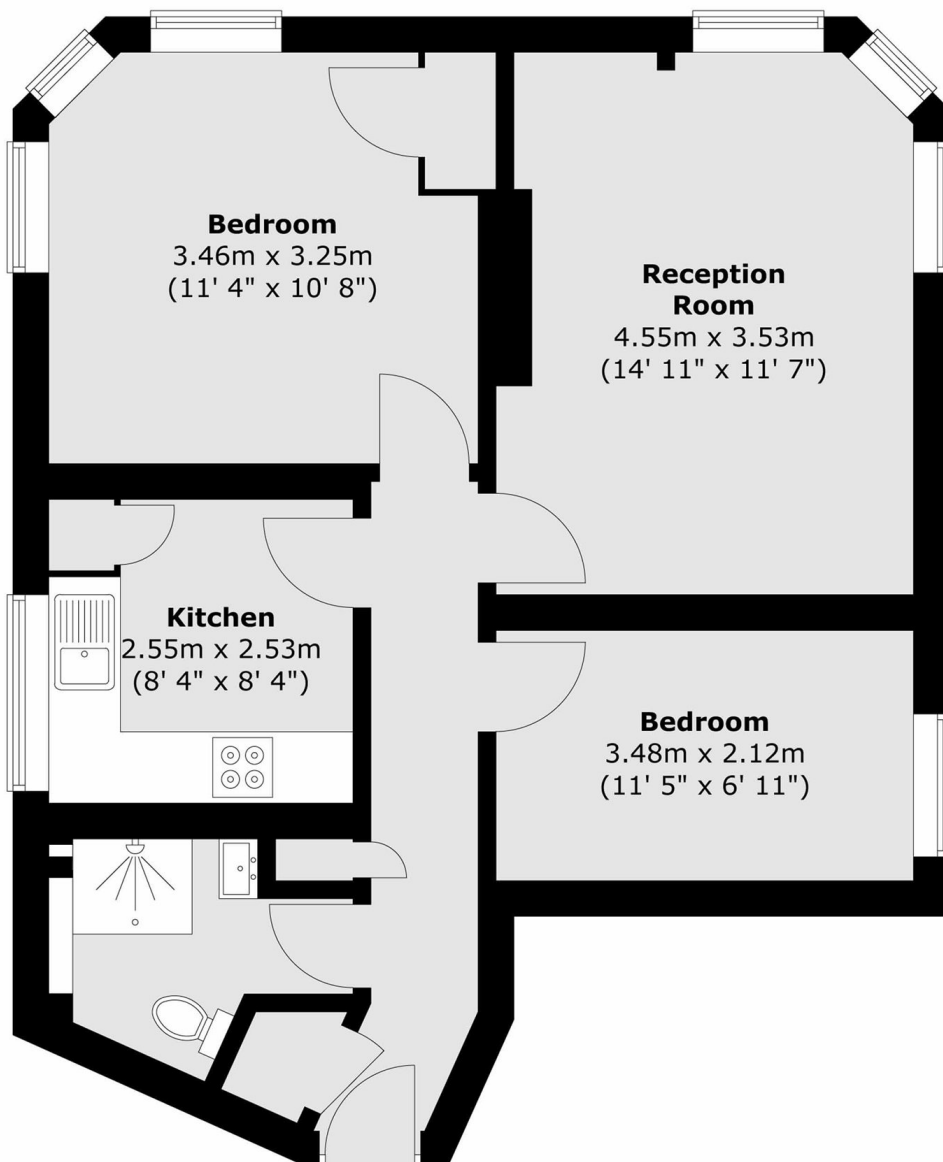
Tower Bridge Buildings is located only 0.2 miles from Bermondsey station at 0.4 miles from London Bridge station. A wide range of shops, cafés, delis and restaurants are also close by.

Features

- Two Double Bedrooms
- Turn Key Condition
- Excellent Location
- Chain Free
- Excellent Transport Links
- Long Lease

Mill Street, London, SE1

Third Floor



Total area (approx.) : 56.4 sq. m (607 sq. ft)