

DOMUS NOVA



Ses Calas, Santa Eulalia – € 12.750.000

In partnership with **BARNES**
INTERNATIONAL REALTY

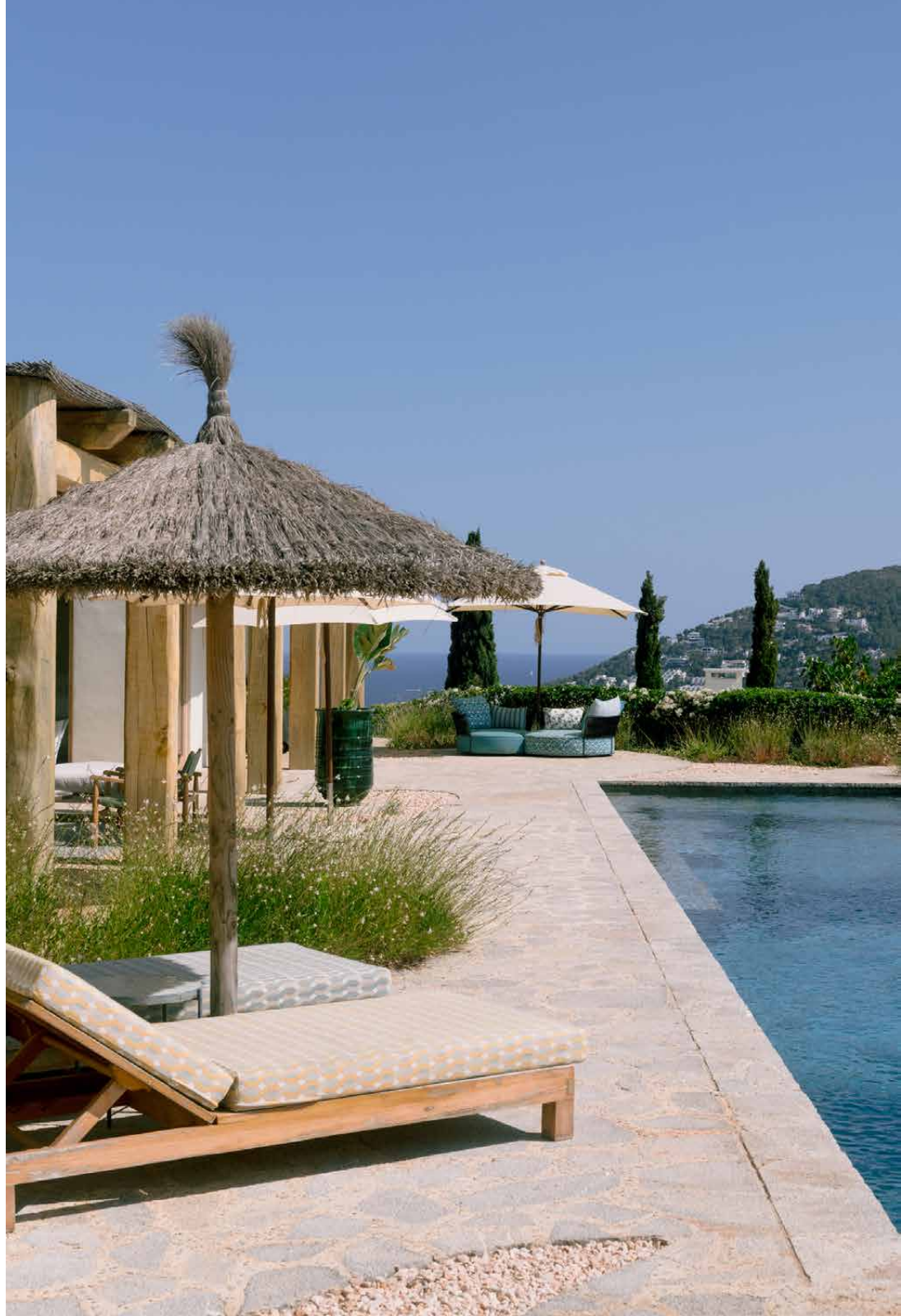


A sprawling estate, nestled in the hills above Santa Eulalia that's elevated in every sense. Step through the gates at Ses Calas and calm descends. As far as the eye can see, sea views and rolling hills – scenes best enjoyed from one of the four panoramic terraces on offer.

Bohemian in nature, the estate encompasses a main house, Diego (named after artist Diego Rivera) as well as a hacienda-style guest house, Frida (after Frida Kahlo). Conceived by Ibizaliving, the design is both timeless and contemporary. Simple lines, geometric shapes and a minimalist sensibility anchor both buildings in the surrounding landscape. Tiered over multiple levels, an 18-metre pool and terrace sit at the estate's peak. Its south-west facing position is primed for sunrise and sunset. There's also a multi-purpose pool house with picture windows out to the ocean and a peaceful landscaped garden.





















Simple lines,
geometric shapes
and a minimalist
sensibility anchor
both buildings in
the surrounding
landscape.

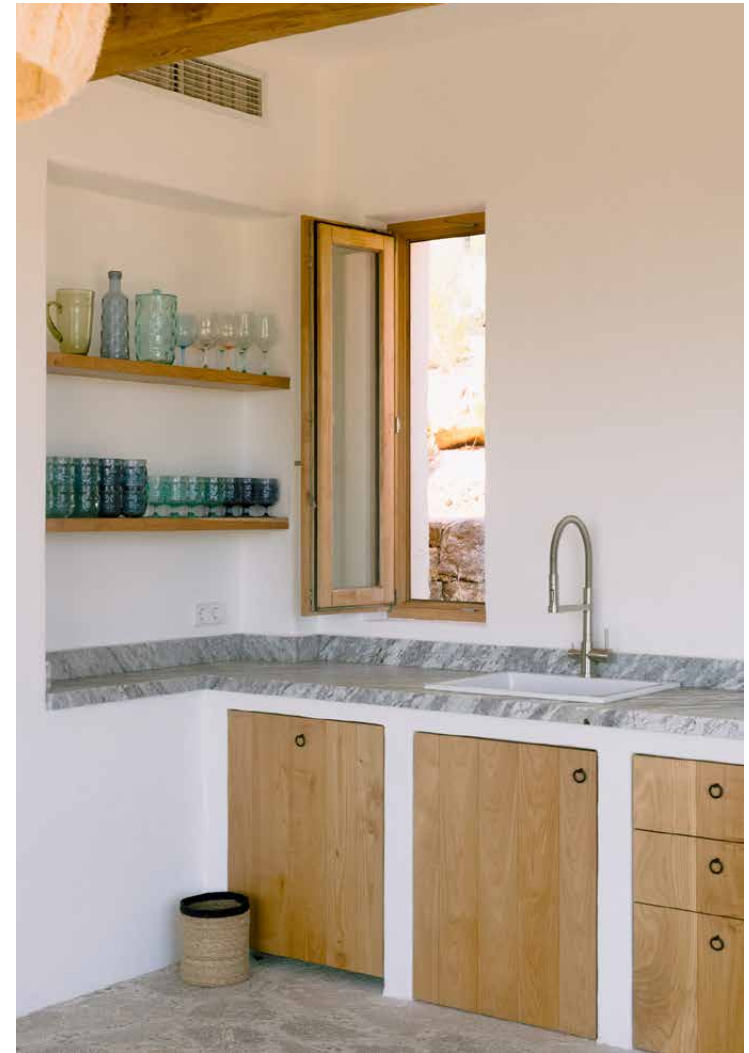








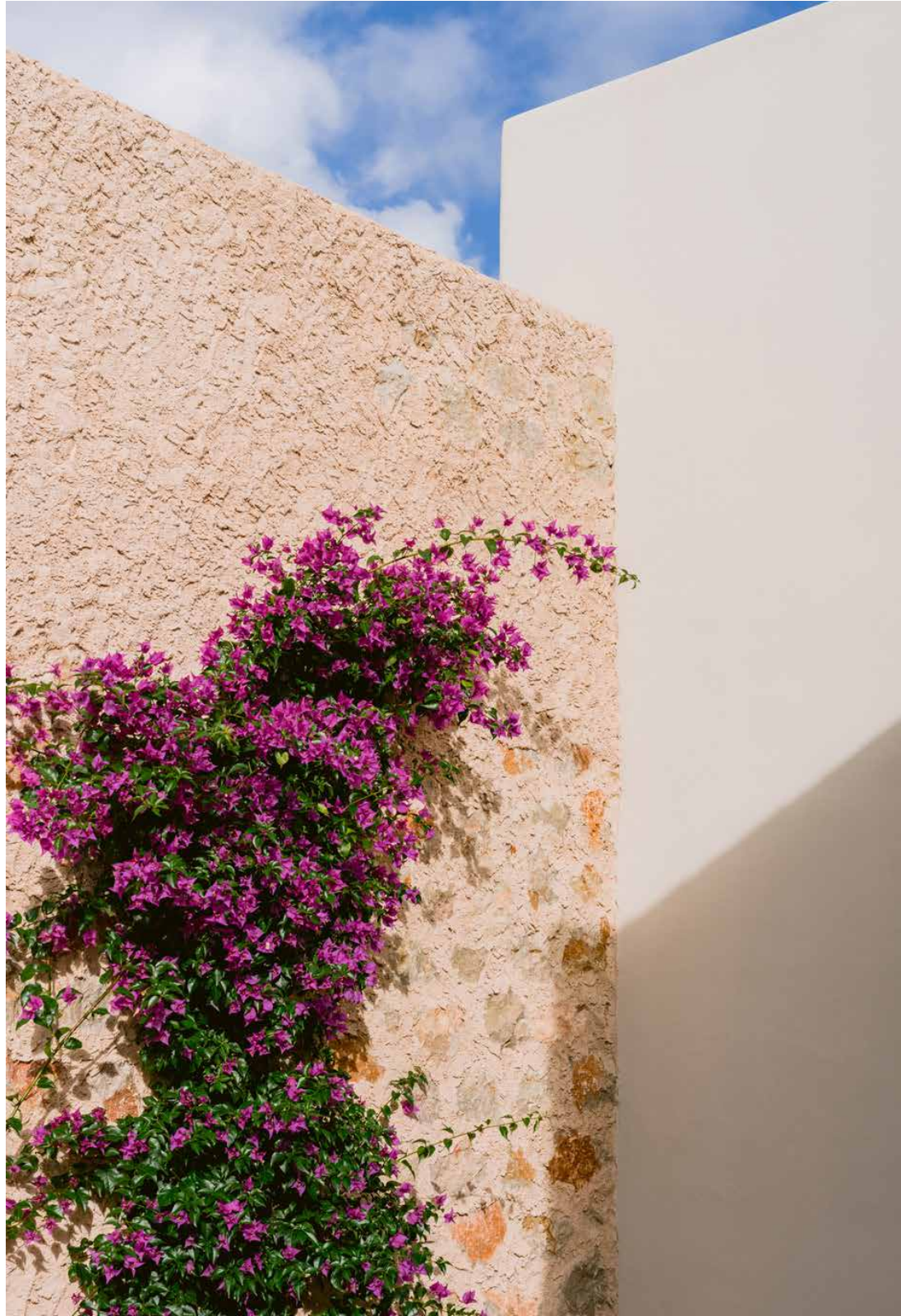
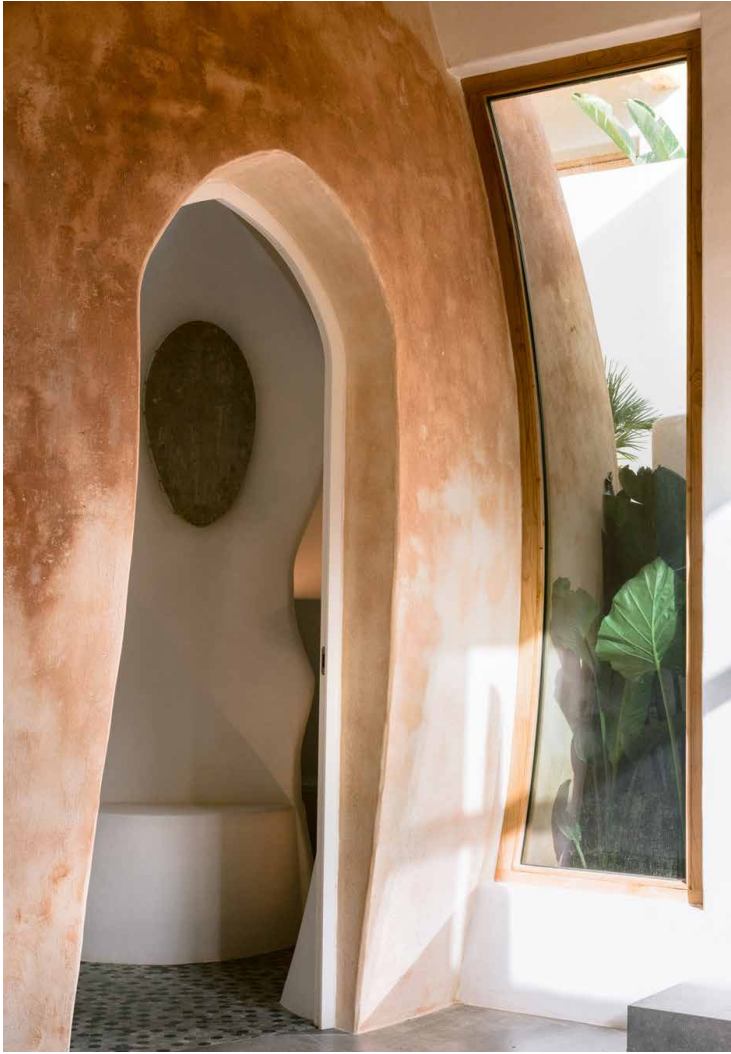




















The main house is inverted to make the most of these views. On the upper floor sits a sociable kitchen with a granite worktop that extends straight out into a long wooden dining table with space for 10. Chestnut beams crisscross the ceiling, while floor-to-ceiling windows lead outside to a pergola and terrace that sets you among the treetops.

Downstairs, there's a separate living room and four bedroom suites, each with views of the Ibicencan countryside. In the master, stepping stones placed over pebbles pave the way to a freestanding bath and rainfall shower. Other features echo the landscape beyond – like the egg-shaped bathroom and a central courtyard with bubbling fountain and stone sundial.













The guest house is very much a product of its environment, too. Rock formations protrude from the floor in the living room, serving as a reminder that the building has been hewn into the hillside.

From here, the open-plan kitchen and dining room overlooks a terrace with a circular infinity pool and another round of endless views. There's also a shaded pergola for al fresco dining. Upstairs, three of the four bedrooms have interconnecting access to a shared terrace.





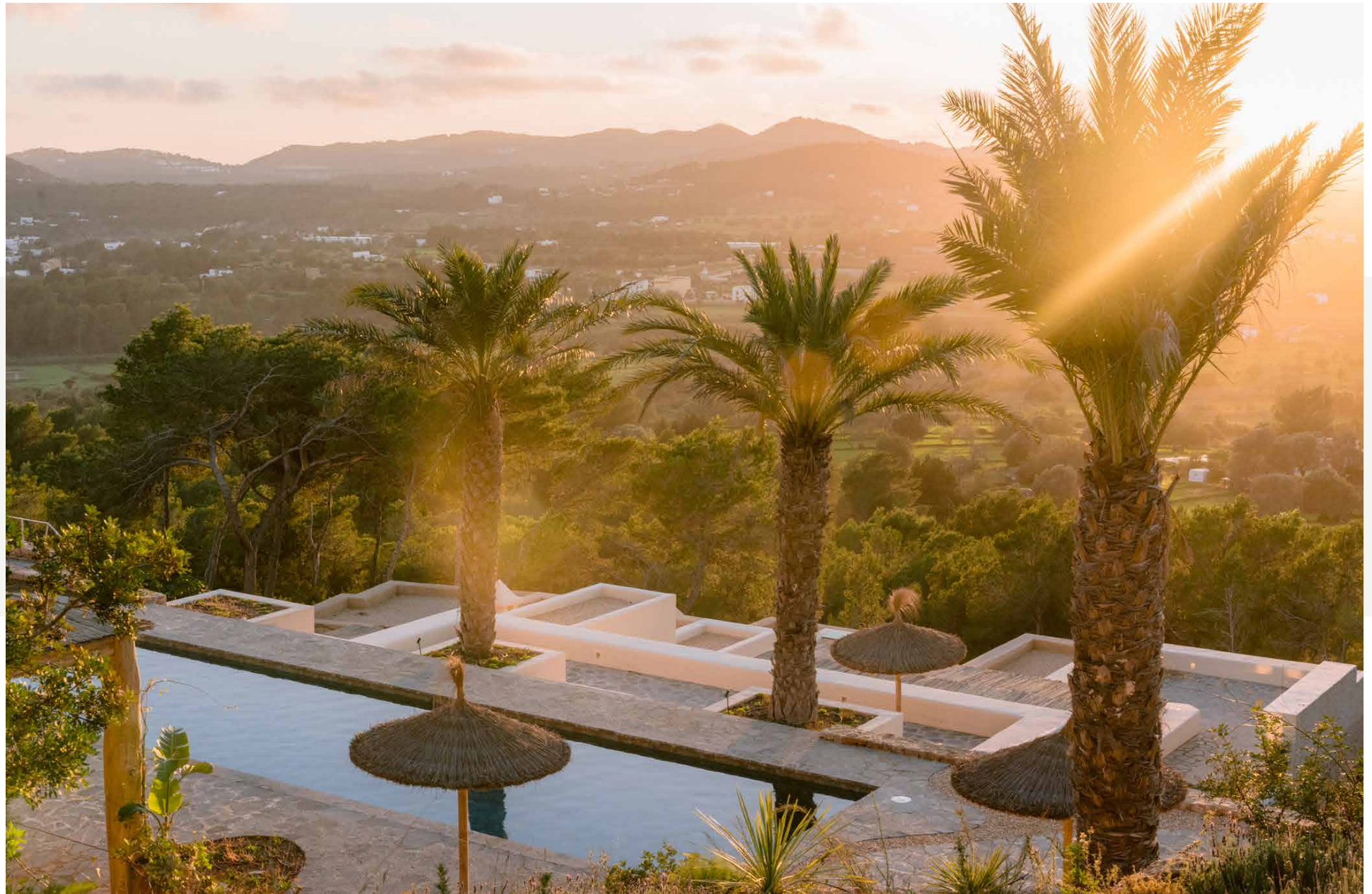
















Property Details

8 Bedrooms, 8 Bathrooms

Main house with four bedrooms and bathrooms

A further four en suite bedrooms in the guest house

Two swimming pools

Separate pool house

Spectacular countryside and sea views

Sunset and sunrise views

Gated entrance and private driveway

Parking space for multiple cars

Integrated air conditioning and underfloor heating throughout

Additional out-house for a gym, studio or playroom.

Main House: 623 sq m

Second House: 545 sq m

Plot Size: 22,000 sq m



Location

Surveying Santa Eulalia from its lofty position, Ses Calas offers a gateway to an authentic, slower pace of life, and a year-round community. World-class restaurants, art galleries and shops are in plentiful supply in the surrounding region, although the vibe remains refreshingly laid-back. Stroll along the palm-lined promenade and yacht marina, peruse the hippy markets at Es Canar or catch the sunrise from the wide sandy shores of Cala Llonga.

Ibiza airport (20 mins)

Santa Eulalia (10 mins)

Cala Llonga (10 mins)

Who ——— we are



Forward-thinkers in property, design and culture, we're an estate agency that hits refresh.

Domus Nova was born out of a desire to do things differently; to break the traditional agency model and focus on design-led homes in London and Ibiza, all while delivering the highest levels of personal service.

Our story starts in the nineties when we founded Notting Hill's first boutique agency – and we continue to open the doors to the most remarkable spaces, revealing them to our like-minded community.

We want to help you live better – and believe considered design can do that. That's why we remain committed to building on our legacy, in collaboration with BARNES International, an established agency with a market-leading presence in 22 countries.

Uniting our local insight and curated portfolio with BARNES International's expansive reach, we can facilitate the best opportunities in not only London and Ibiza, but also across Europe, the US and further afield – whether that's a château in the South of France, a penthouse in New York, or a chalet in the Swiss Alps.



DOMUS NOVA

Specialising in London
and Ibiza's design-led homes

Let's talk

+34 871 51 53 02

ibiza@domusnova.com

The property particulars are a guide not statements. Descriptions, photographs, and plans are for guidance and should be checked a prospective purchaser or tenant. The Property is offered "subject to contract". No warranties, representations, or Tenancy is given by Domus Nova. Expenses incurred by a prospective tenant or buyer will not be reimbursed if the Landlord or the Seller withdraws prior to the Tenancy Agreement being signed, dated and exchanged and cleared funds received. Further details of the Disclaimer together with trading names and our Privacy Policy is shown on our website The IVA position relating to the property may change without notice.

View our privacy policy on how your data is processed and used. To find out how we process Personal Data, please refer to our Privacy Statement and other notices at [Privacy Statement](#).

© 2025 Domus Nova in partnership with BARNES International. All rights reserved.

In partnership with
BARNES
INTERNATIONAL REALTY