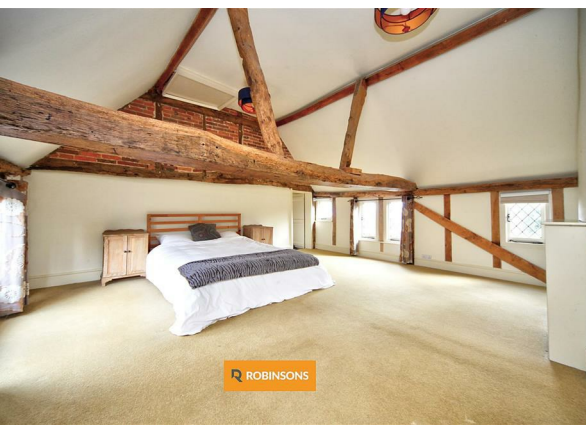
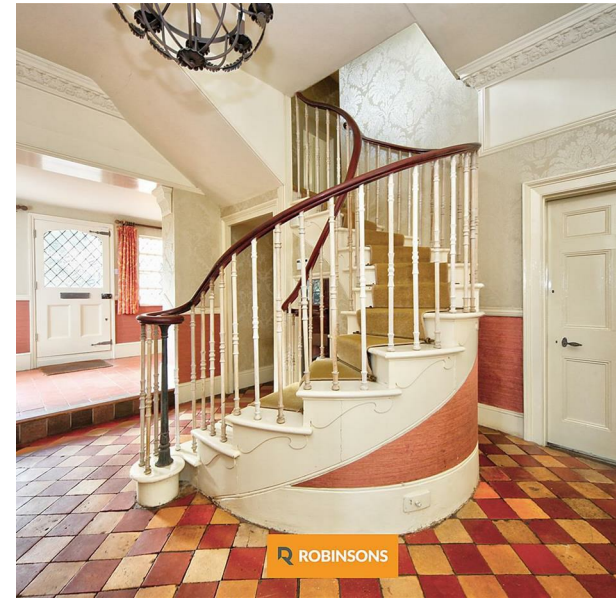
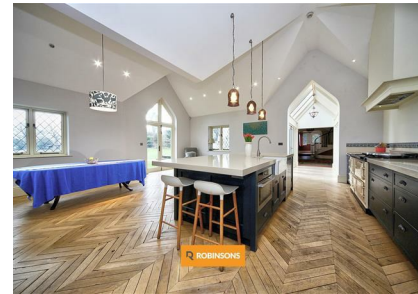


The Grove Common Road, Kensworth, Dunstable, LU6 2PH
£1,300,000

ROBINSONS

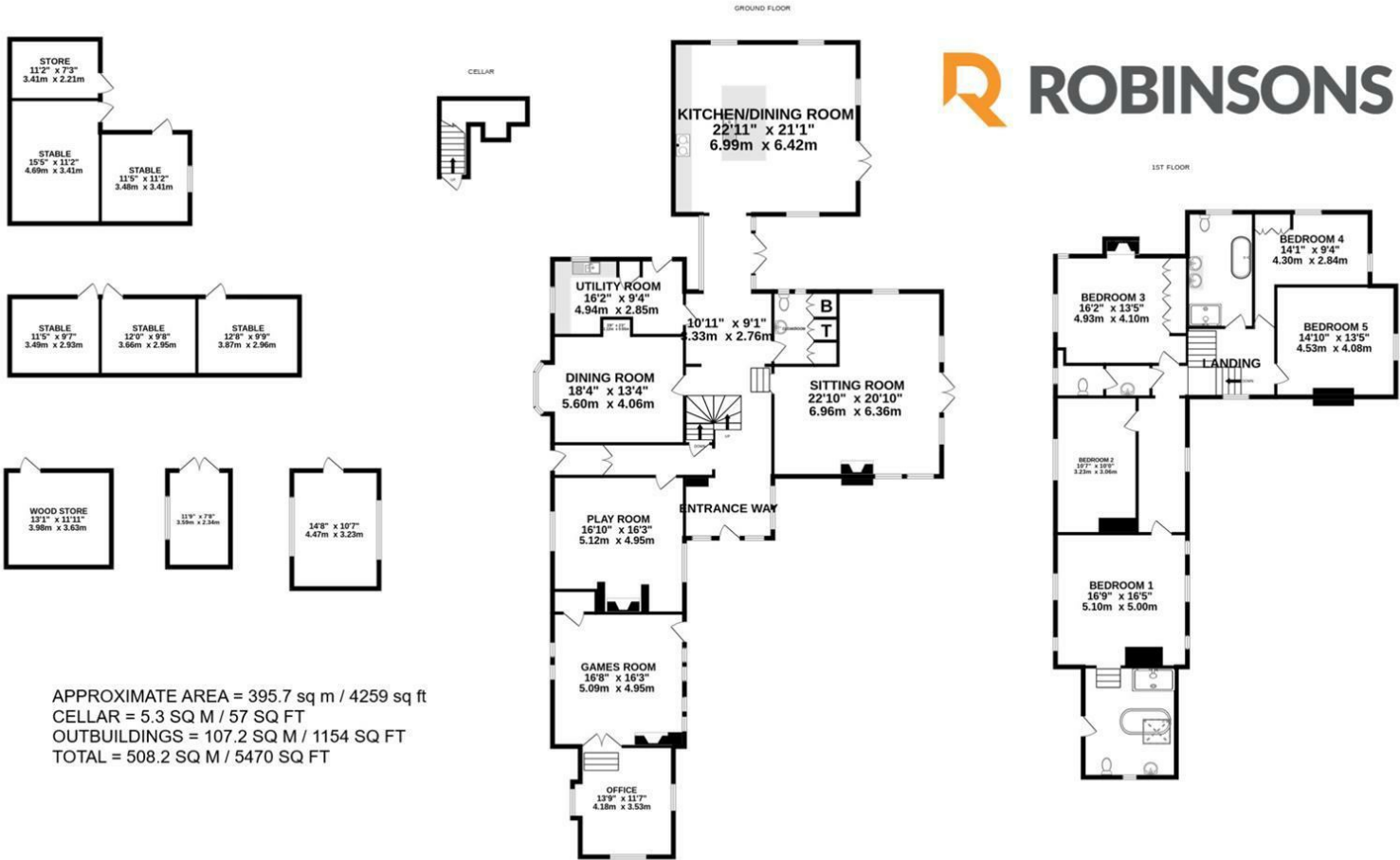


STUNNING 16TH-CENTURY 5-BED DETACHED FAMILY HOME SET ON 6 ACRES WITH 5 STABLES, EQUESTRIAN FACILITIES, AND FAR-REACHING COUNTRYSIDE VIEWS.

This elegant Grade II listed country residence offers a rare blend of period character, generous proportions and flexible accommodation, all set within beautifully maintained grounds. The ground floor is arranged around a welcoming reception hall and includes a superb kitchen/dining room, a refined sitting room and a formal dining room, complemented by several additional reception rooms including a games room, playroom and a dedicated home office. A utility room, cellar and guest cloakroom complete the ground floor.

The first floor provides five well-proportioned double bedrooms arranged around a central landing. The principal bedroom benefits from ensuite facilities, while the remaining bedrooms are served by a family bathroom.

The property is approached via automated gates opening onto a private driveway with ample parking and an electric vehicle charging point. The grounds are a particular highlight, featuring formal gardens, two paddocks, a sand and rubber manège and an attractive stable yard with five stables, additional outbuildings and a wood store.



This floorplan is for illustrative purposes only. The measurement and position of each element is approximate and must be viewed as such.



20 West Street
Dunstable
Bedfordshire
LU6 1SX
01582 661112
sales@robinsons-estates.co.uk
<https://www.robinsons-estates.co.uk>

