



Warwick Road, Balderton

Guide Price £325,000 to £350,000



Warwick Road

Balderton, Newark

Having been tastefully renovated and EXTENDED by the current owners, this magnificent DETACHED bungalow boasts a delightful SOUTH FACING plot with a range of outbuildings in the rear garden, and a wonderful in-and-out driveway providing off street parking for multiple vehicles. The bungalow is conveniently located in the heart of Balderton with easy access to the A1, Newark town centre and a variety of local amenities.

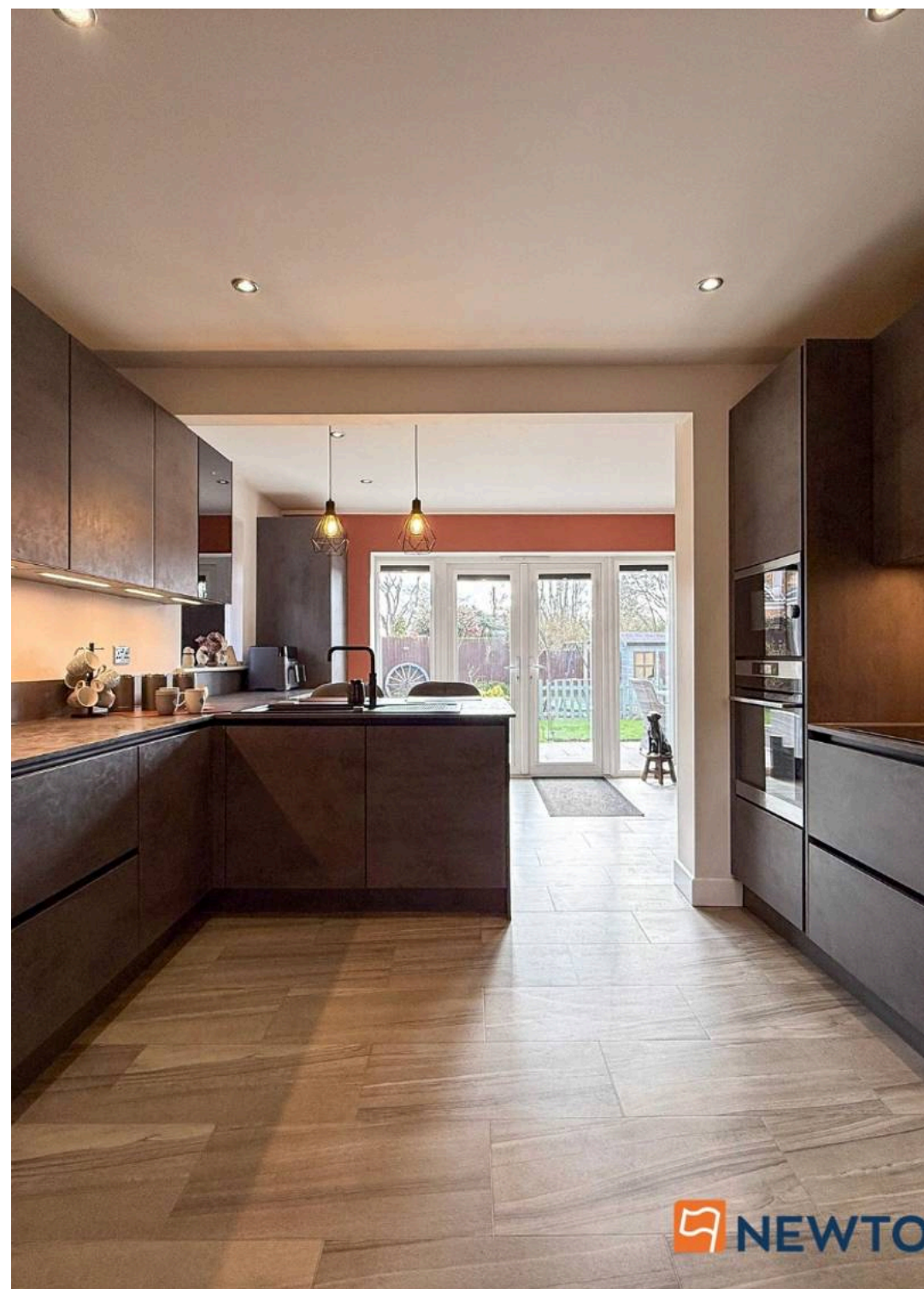
The bungalow's immaculate and versatile accommodation comprises: inviting entrance hallway, generous dual aspect lounge with French doors to the rear garden and a feature multi fuel burning stove, spacious sitting room/bedroom, spectacular open plan living/dining kitchen that provides a superb hub of the home. The living area has French doors to the rear garden, and the kitchen boasts a range of high-quality integrated appliances to include a Quooker hot top, induction hob, electric oven, microwave, fridge/freezer, dishwasher and washing machine. Back from the hallway, there is access to a luxurious shower room and three bedrooms, one of which is currently being utilised as a home office.

Outside, the property is approached with a secure in-and-out driveway with two sets of wrought iron gates allowing off street parking for multiple vehicles. The rear garden offers a good degree of privacy, is south facing and has been wonderfully landscaped. The garden includes a range of brick-built outbuildings that could be utilised for a variety of purposes, a marvellous paved entertaining area for those summer evenings, and a mix of gravelled and planted areas for low maintenance. Other features include gas combi central heating (boiler installed in 2021) and UPVC double glazing.

Council Tax Band: C

Tenure: Freehold

EPC Energy Efficiency Rating: C





Entrance Hallway

10' 2" x 9' 1" (3.10m x 2.77m)
maximum measurements

Lounge

17' 6" x 11' 11" (5.33m x 3.63m)
maximum measurements

Sitting Room/Bedroom

15' 9" x 7' 11" (4.80m x 2.41m)

Open Plan Living/Dining Kitchen

27' 4" x 14' 5" (8.33m x 4.39m)
maximum measurements

Bedroom One

12' 5" x 10' 11" (3.79m x 3.33m)

Bedroom Two

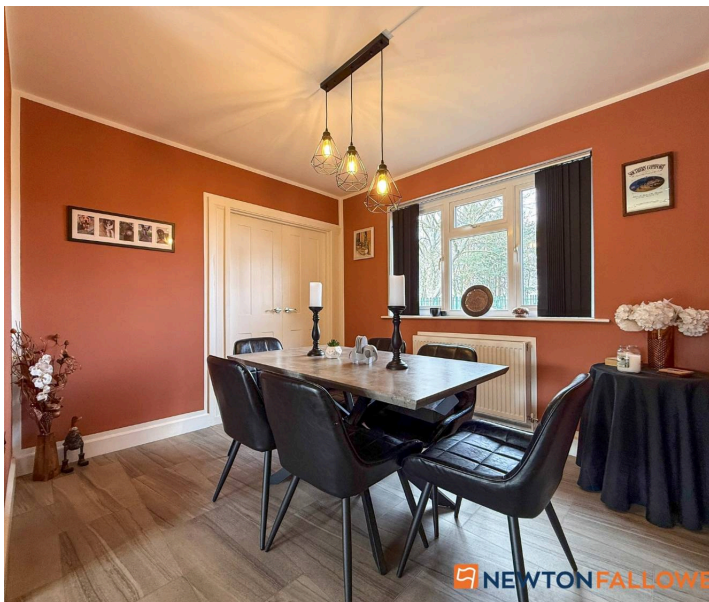
12' 5" x 11' 7" (3.79m x 3.53m)
maximum measurements

Bedroom Three/Study

8' 6" x 7' 0" (2.59m x 2.13m)
maximum measurements

Shower Room

7' 10" x 6' 9" (2.39m x 2.06m)



Store 1

7' 8" x 6' 1" (2.34m x 1.85m)

Store 2

8' 1" x 6' 1" (2.46m x 1.85m)

Store 3

6' 1" x 4' 0" (1.85m x 1.22m)

Services

Mains gas, electricity, water and drainage are connected.





Square Footage

The square footage for this property is approximately 1,221 sq ft. Please note whilst every care is taken in providing this information as accurately as possible, this figure is calculated whilst creating the property's floor plan, which does not factor in a number of potential variations including wall thickness, curves, triangular walls, chimney breasts etc and alterations to the floorplan to ensure it is representative of the property's layout. The square footage may also include garages, porches, outbuildings, garden buildings and external corridors where applicable, please contact the office for further information/clarification. The EPC and Interactive Property Report may show a different total square footage.

Agent's Note - Sales Particulars

Although these particulars are thought to be materially correct, their accuracy cannot be guaranteed, and they do not form part of any contract. All services, heating systems and appliances have not and will not be tested, and no guarantees have been provided for any aspects of the property, measurements are taken internally and cannot be assumed to be accurate, they are given as a guide only.



Anti-Money Laundering Regulations

Intending purchasers will be asked to confirm their identity at the offer stage and we ask for your co-operation in order that there will be no delay in agreeing a sale.

Referrals

Newton Fallowell Newark and our partners provide a range of services to our vendors and buyers. Conveyancing - If you require a solicitor to handle your sale or purchase, we can refer you on to a panel of preferred providers, we may receive a referral of up to £350 if you choose to use their services, there is no obligation to use solicitors we refer to. Mortgage Advice - Correct budgeting is crucial before committing to purchasing a property. You are free to arrange your own advice, but we can refer you to the Mortgage Advice Bureau who are in house for specialist advice on 1000s of mortgage deals if required. Please be aware that we may receive a fee of £332 if you ultimately choose to arrange a mortgage/insurance through them. Property Surveys - If you require a property survey of any kind, we can refer you to an RICS surveyor, and we may receive a referral fee of up to £30 should you choose to arrange a survey through them. For more information, please call the office.



GROUND FLOOR



Whilst every attempt has been made to ensure the accuracy of the floorplan contained here, measurements of doors, windows, rooms and any other items are approximate and no responsibility is taken for any error, omission or mis-statement. This plan is for illustrative purposes only and should be used as such by any prospective purchaser. The services, systems and appliances shown have not been tested and no guarantee as to their operability or efficiency can be given.
Made with Metropix ©2026



Newton Fallowell

Newton Fallowell, 12-14 Middle Gate - NG24 1AG

01636 706444 · newark@newtonfallowell.co.uk · www.newtonfallowell.co.uk/

 **NEWTON FALLOWELL**