



28 Grenadier Way

Ashford, TN23 5JN

50% Shared Ownership £92,500

50% Shared Ownership - Places for People

Well presented two bedroom ground floor apartment on the popular Singleton Hill area of Ashford close to local amenities, schools and doctors.

The accommodation comprises of hallway, open plan kitchen / sitting room, two bedrooms and bathroom. There is an allocated parking space and the property benefits from double glazing and electric heating

- TWO BEDROOMS
- GROUND FLOOR
- WELL PRESENTED APARTMENT
- OPEN PLAN KITCHEN / SITTING ROOM
- ALLOCATED PARKING
- POPULAR LOCATION
- CLOSE TO LOCAL AMENITIES
- BALANCE OF 99 YRS FROM 2008
- SHARED OWNERSHIP - 50% SHARE
- £392 pcm INC. 50% SHARED OWNERSHIP RENT

Viewing

Please contact our Ashford Office on 01233 646411 if you wish to arrange a viewing appointment for this property or require further information.



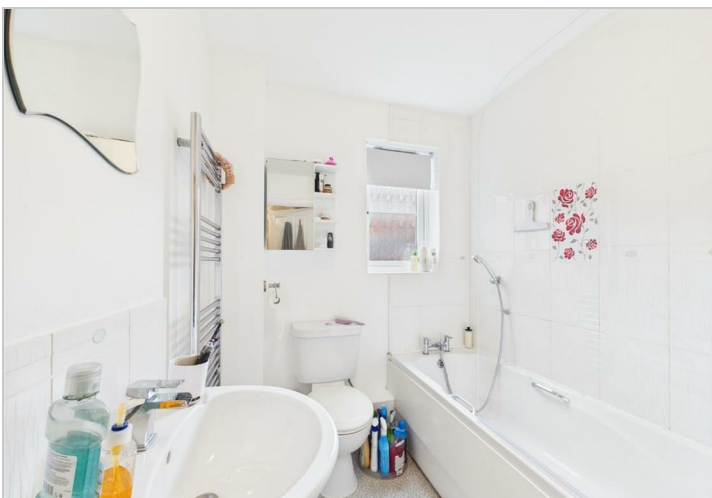
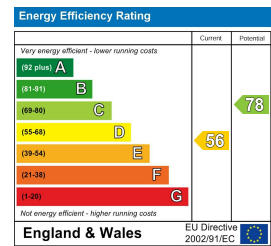
Floor Plan



Area Map



Energy Efficiency Graph



These particulars, whilst believed to be accurate are set out as a general outline only for guidance and do not constitute any part of an offer or contract. Intending purchasers should not rely on them as statements of representation of fact, but must satisfy themselves by inspection or otherwise as to their accuracy. No person in this firm's employment has the authority to make or give any representation or warranty in respect of the property.