



Bravington Road, W9

£775,000

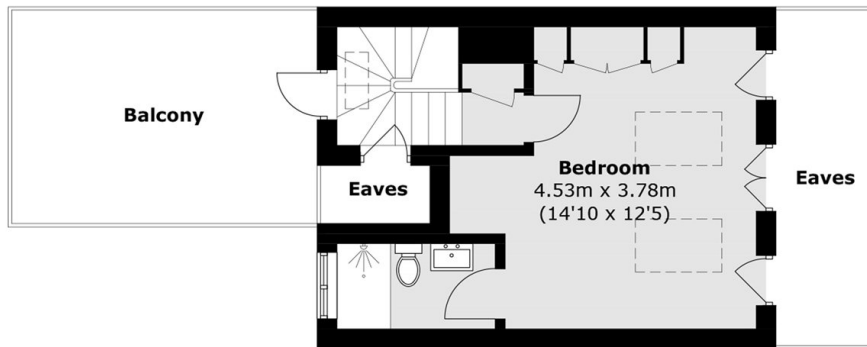
A beautifully presented top floor flat within a charming Victorian conversion situated on quiet cul-de-sac. The property is a modern refurbishment with good quality fittings and features spacious interiors throughout and high ceilings. The property is comprised of three bedrooms, including a principal bedroom with en suite, a separate kitchen, sizable reception and dining area, wooden flooring and ample storage. The home also benefits from a private, east-facing terrace.

Bravington Road is a residential street with convenient access to Queen's Park or Westbourne Park, as well as several transport links to Central London. The property is located within a mile of Little Venice, Portobello and Paddington Recreation Grounds. It is also within close proximity of a nearby Sainsbury's.

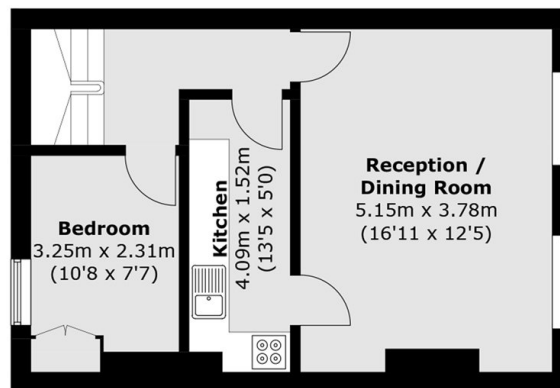
Features

- Share of Freehold
- Private Terrace
- Two Bathrooms
- Great Transport Links
- Ample Storage
- Separate Kitchen

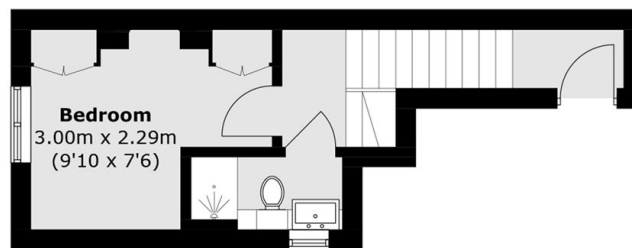
Bravington Road, Maida Vale, W9



Third Floor



Second Floor



First Floor

Total area (approx.): 85.5 sq. m (920.3 sq. ft)
(Excluding Eaves)
Balcony: 14.6 sq. m (157.1 sq. ft)