



**Cotswold Close, CORBY NN18 8GN**

**welcome to**

## **Cotswold Close, CORBY**

Stunning five bedroom detached family home with double garage and off road parking.

### **Entrance Hall**

Entry via composite front door, stairs to first floor, doors to lower ground WC, living room and external.

### **Cloakroom**

Obscure double glazed window to rear, WC, wash hand basin radiator and laminate floor.

### **Lounge**

11' 5" max x 11' 6" ( 3.48m max x 3.51m )  
Double glazed window to front, laminate floor, radiator, leading onto dining room.

### **Dining Room**

12' 5" x 9' 5" ( 3.78m x 2.87m )  
Double glazed window to front, laminate floor and radiator.

### **Reception Room 3**

14' 10" max x 10' 2" ( 4.52m max x 3.10m )  
Double glazed window to rear with double glazed patio door leading to rear garden, Electric heater, double glazed window on internal wall to living area.

### **Kitchen**

12' 5" max x 13' 4" ( 3.78m max x 4.06m )  
Double glazed window to rear aspect, range of wall and base units, double oven with integrated gas hob with extractor unit, space and plumbing for washing machine.

### **Landing**

Doors to bathroom and bedroom 1-3, stairs to second floor, carpet.

### **Bedroom Two**

11' 1" x 11' 11" ( 3.38m x 3.63m )  
Double glazed window to front, built in wardrobe x two, door to En Suite, carpet.

### **En Suite**

Shower cubicle, WC, wash hand basin, tiled.

### **Bedroom Three**

12' 10" max x 9' 9" max ( 3.91m max x 2.97m max )  
Double glazed window to front, wardrobe, carpet and radiator.

### **Bedroom One**

12' 9" x 10' 8" ( 3.89m x 3.25m )  
Double glazed window to front, built in wardrobe, carpet and radiator, door to En Suite

### **En Suite**

Shower Cubicle, WC, wash hand basin, towel radiator and obscure double glazed window to side.

### **Bedroom Four Second Floor**

15' 9" x 10' 6" ( 4.80m x 3.20m )  
Double glazed window to front aspect, reduced head height, door to en suite, built in wardrobe, carpet and radiator.

### **En Suite**

Shower Cubicle part tiled, WC, wash hand basin.





### **Bedroom Five Second Floor**

17' into recess x 9' 9" ( 5.18m into recess x 2.97m )  
Double glazed window to front aspect, loft hatch,  
reduced head height, cupboard, carpet and radiator.

### **Landing**

Double glazed window, cupboard, carpet and doors  
to bedroom 4 and 5.

### **Externally**

#### **Front**

Hard standing driveway.

#### **Rear Garden**

Mainly laid to lawn with patio seating area, enclosed  
rear fencing with side access to front.

#### **Outbuilding**

16' 10" x 17' ( 5.13m x 5.18m )  
External double glazed patio doors to front,  
laminated floor, up and over garage door.



***view this property online*** [williamhbrown.co.uk/Property/COR112265](http://williamhbrown.co.uk/Property/COR112265)



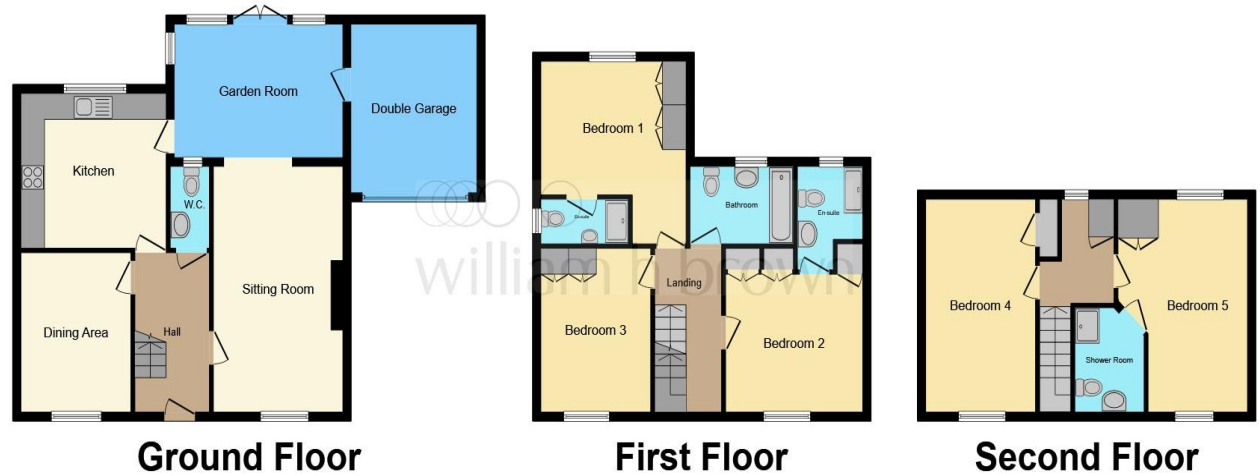
welcome to

## Cotswold Close, CORBY

- Five Bedrooms
- Detached
- Three En Suites
- Double Garage
- Off road parking

Tenure: Freehold EPC Rating: C  
Council Tax Band: E

offers in excess of  
**£415,000**



This floor plan is for illustrative purposes only. It is not drawn to scale. Any measurements, floor areas (including any total floor area), openings and orientation are approximate. No details are guaranteed, they cannot be relied upon for any purpose and they do not form part of any agreement. No liability is taken for any error, omission or misstatement. A party must rely upon its own inspection(s). Powered by [www.focalagent.com](http://www.focalagent.com)

**view this property online** [williamhbrown.co.uk/Property/COR112265](http://williamhbrown.co.uk/Property/COR112265)



Property Ref:  
COR112265 - 0004

1. MONEY LAUNDERING REGULATIONS Intending purchasers will be asked to produce identification documentation at a later stage and we would ask for your co-operation in order that there is no delay in agreeing the sale. 2. These particulars do not constitute part or all of an offer or contract. 3. The measurements indicated are supplied for guidance only and as such must be considered incorrect. Potential buyers are advised to recheck measurements before committing to any expense. 4. We have not tested any apparatus, equipment, fixtures or services and it is in the buyers interest to check the working condition of any appliances. 5. Where an EPC, or a Home Report (Scotland only) is held for this property, it is available for inspection at the branch by appointment. If you require a printed version of a Home Report, you will need to pay a reasonable production charge reflecting printing and other costs. 6. We are not able to offer an opinion either written or verbal on the content of these reports and this must be obtained from your legal representative. 7. Whilst we take care in preparing these reports, a buyer should ensure that his/her legal representative confirms as soon as possible all matters relating to title including the extent and boundaries of the property and other important matters before exchange of contracts.

William H Brown is a trading name of Sequence (UK) Limited which is registered in England and Wales under company number 4268443, Registered Office is Cumbria House, 16-20 Hockliffe Street, Leighton Buzzard, Bedfordshire, LU7 1GN. VAT Registration Number is 500 2481 05.

  
william h brown



**01536 267418**



[corby@williamhbrown.co.uk](mailto:corby@williamhbrown.co.uk)



61A Corporation Street, CORBY,  
Northamptonshire, NN17 1NQ



[williamhbrown.co.uk](http://williamhbrown.co.uk)