



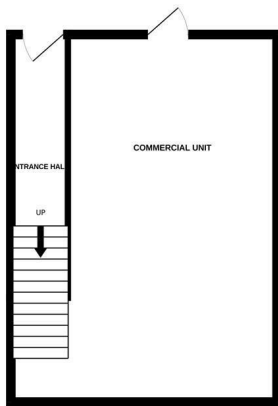
Old London Road, Hastings TN35 5BB

Offers in excess of £175,000

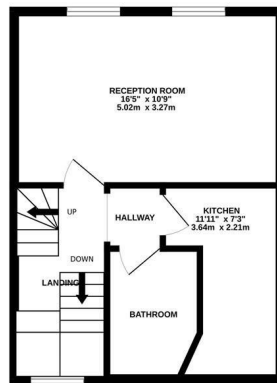


A spacious VICTORIAN TERRACED HOUSE with a COMMERCIAL UNIT and one bedroom maisonette situated in a favoured CLIVE VALE LOCATION, just a short stroll from the shopping facilities at Ore Village, Hastings historic Old Town and the sea front. The accommodation here is arranged as a modern commercial space on the ground floor which is currently let as a convenience store. The maisonette spans the two upper floors with a BRIGHT LIVING ROOM positioned at the front of the property offering plenty of room for a dining table while the kitchen and family bathroom can be found at the rear. The large DOUBLE BEDROOM spans the second floor and features handy eaves storage. There is also a BASEMENT LEVEL which provides additional storage and to the rear there is a COURTYARD GARDEN with OFF ROAD PARKING for multiple vehicles. Being sold with NO ONWARD CHAIN and tenants in situ, this property would make the ideal INVESTMENT OPPORTUNITY.

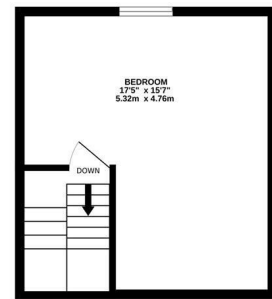
GROUND FLOOR
373 sq.ft. (34.6 sq.m.) approx.



1ST FLOOR
373 sq.ft. (34.6 sq.m.) approx.



2ND FLOOR
273 sq.ft. (25.3 sq.m.) approx.



TOTAL FLOOR AREA : 1019 sq.ft. (94.6 sq.m.) approx.

Whilst every attempt has been made to ensure the accuracy of the floorplan contained here, measurements of doors, windows, rooms and any other items are approximate and no responsibility is taken for any error, omission or mis-statement. This plan is for illustrative purposes only and should be used as such by any prospective purchaser. The services, systems and appliances shown have not been tested and no guarantee as to their operability or efficiency can be given.
Made with Metropix ©2024

