



Briery Way, Hemel Hempstead, HP2 7AN

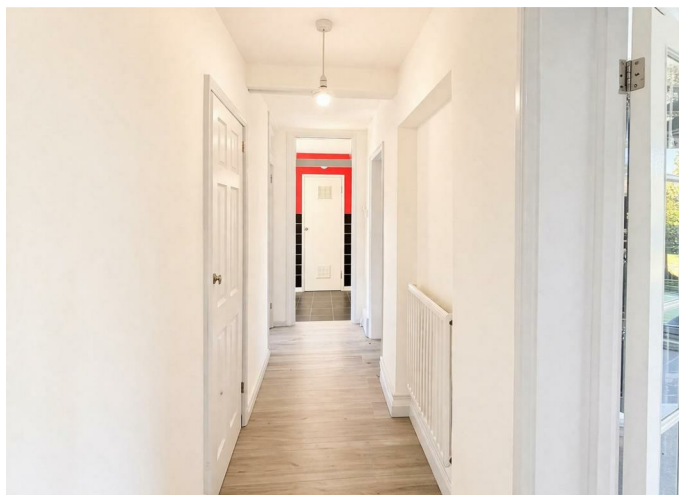
£170,000

Offered with the benefit of no upper chain is this purpose built ground floor flat. Boasting one bedroom, living room with balcony and access to the communal garden, fitted kitchen, gas central heating, double glazing and external storage cupboard.

Located within easy reach of local shops and amenities, Hemel Hempstead town centre and the M1, M25 and A41 road links.

Communal Hall

Entrance Hall



Fitted Kitchen 13'1 x 6'5 (3.99m x 1.96m)



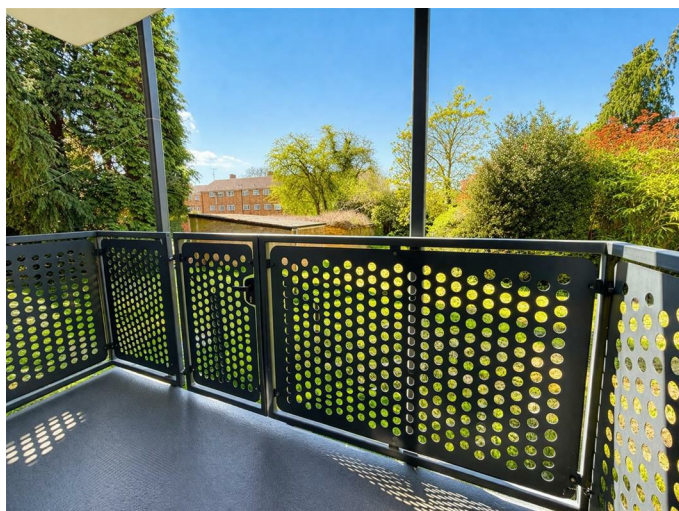
Living Room 12'2 x 10'8 (3.71m x 3.25m)



Bedroom 11'7 x 10'8 (3.53m x 3.25m)



Balcony



Bathroom



Outside



Communal Grounds



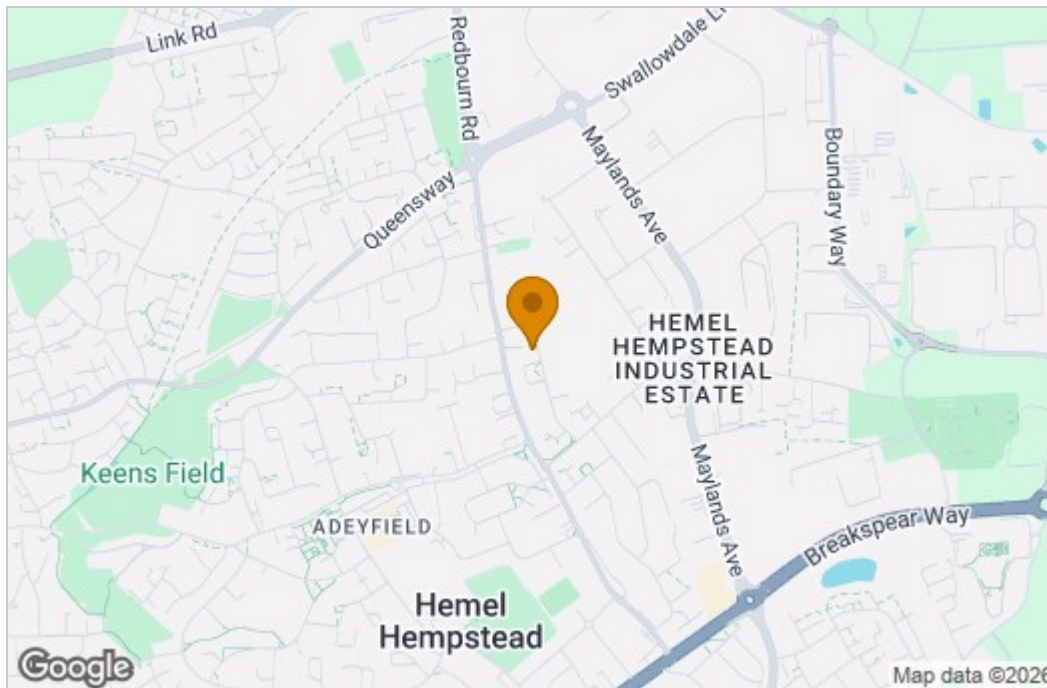
Floor Plan



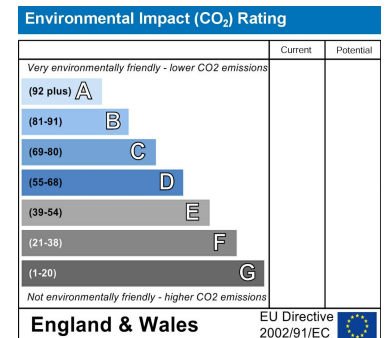
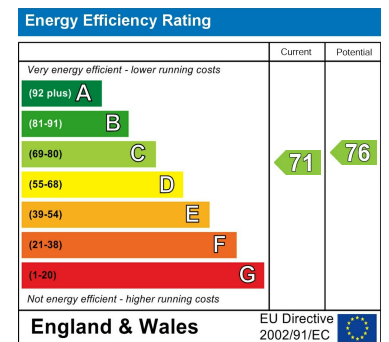
Floor Plan

This floor plan is for illustrative purposes only. It is not drawn to scale. Any measurements, floor areas (including any total floor area), openings and orientations are approximate. No details are guaranteed, they cannot be relied upon for any purpose and do not form any part of any agreement. No liability is taken for any error, omission or misstatement. A party must rely upon its own inspection(s). Powered by www.Propertybox.io

Area Map



Energy Efficiency Graph



These particulars, whilst believed to be accurate are set out as a general outline only for guidance and do not constitute any part of an offer or contract. Intending purchasers should not rely on them as statements of representation of fact, but must satisfy themselves by inspection or otherwise as to their accuracy. No person in this firm's employment has the authority to make or give any representation or warranty in respect of the property.