



Manor Drive, KT5

£450,000

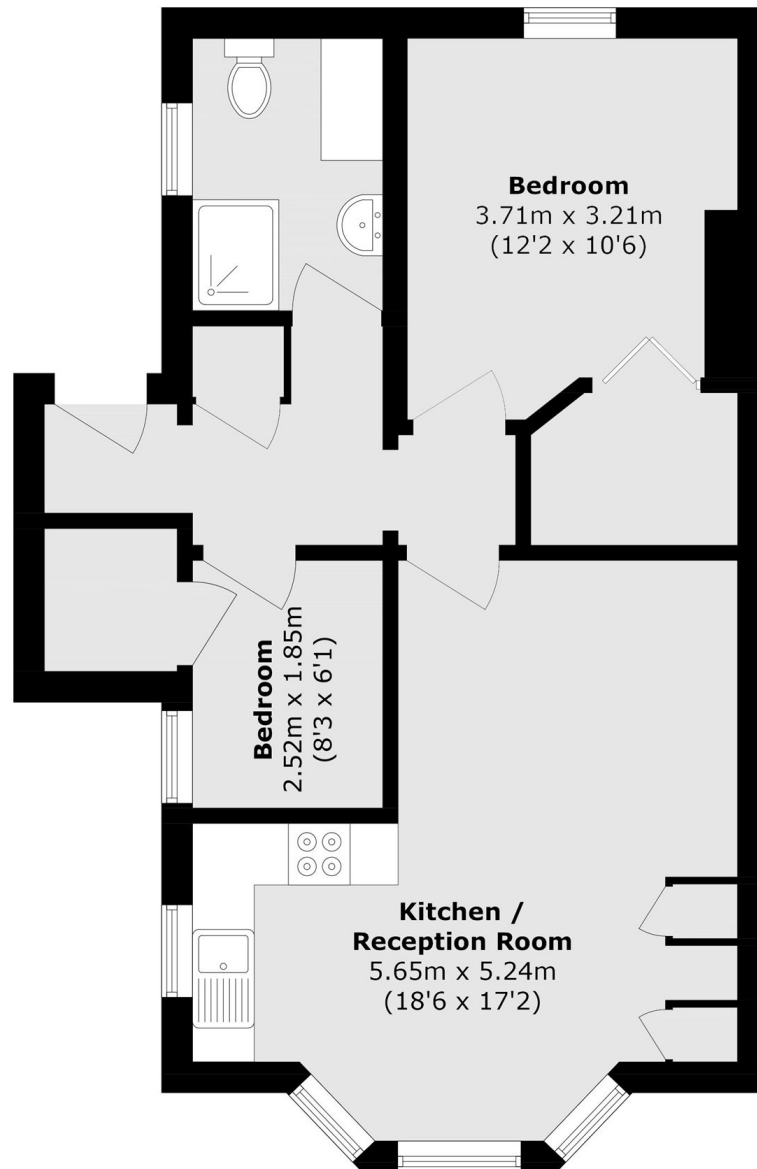
This Victorian apartment is set in an imposing period building and has been lovingly renovated throughout. The property has its own front door, a bay fronted reception room with modern open plan kitchen/dining area, a large main bedroom, second bedroom/study and a stylish bathroom. The property further benefits from its own private south west facing garden and a share of the freehold.

Manor Drive is a peaceful tree lined road conveniently just over half a mile away from both Surbiton and Berrylands mainline train stations, with their quick and efficient links to London Waterloo.

Features

- Own Front Door
- Refurbished Throughout
- Bay Fronted
- Two Beds
- Private S/W Facing Garden
- Share Of Freehold

Manor Drive, Surbiton, KT5



Total area (approx.): 58.3 sq. m (627.5 sq. ft)