

Crucible

Homes



The Ravine
Sheffield, S5 0DT

Guide Price
£160,000

Overview

Semi detached house

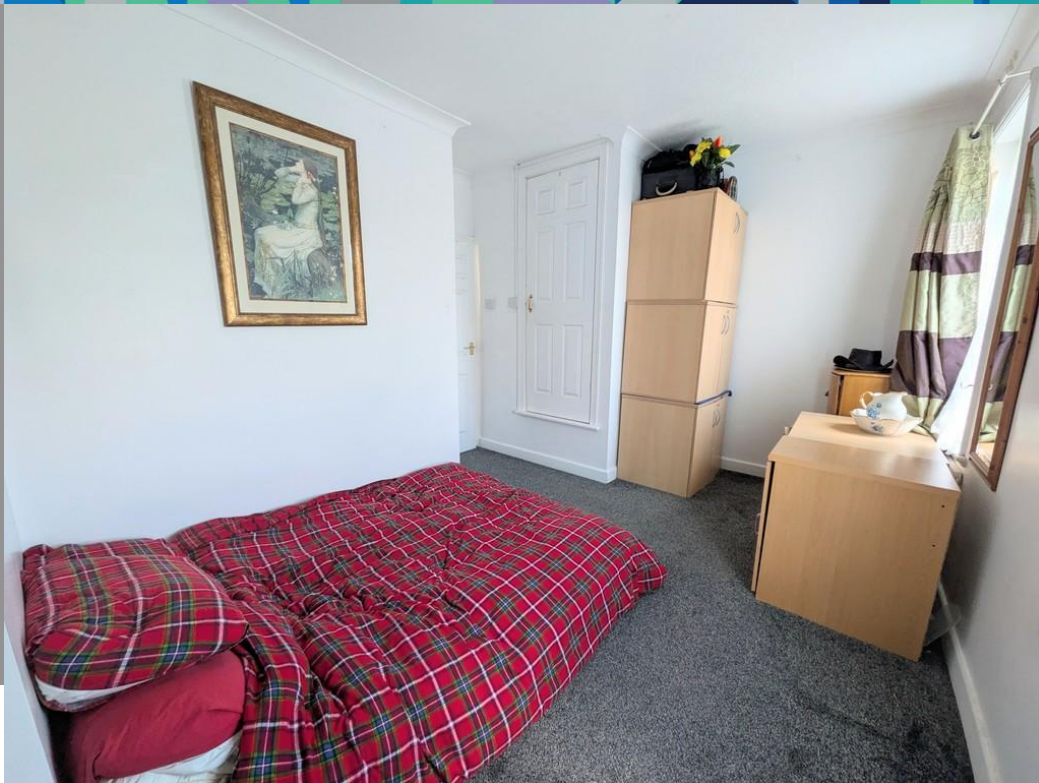
Three bedrooms

Close to local amenities & transport links

Car Charging Point & Off Road Parking with a Garage

situated on a corner plot

No chain



Description

****For Sale – The Ravine, S5****

****Guide Price £160,000 - £170,000****

Situated on a generous corner plot, this three-bedroom semi-detached home offers fantastic potential for buyers looking to put their own stamp on a property.

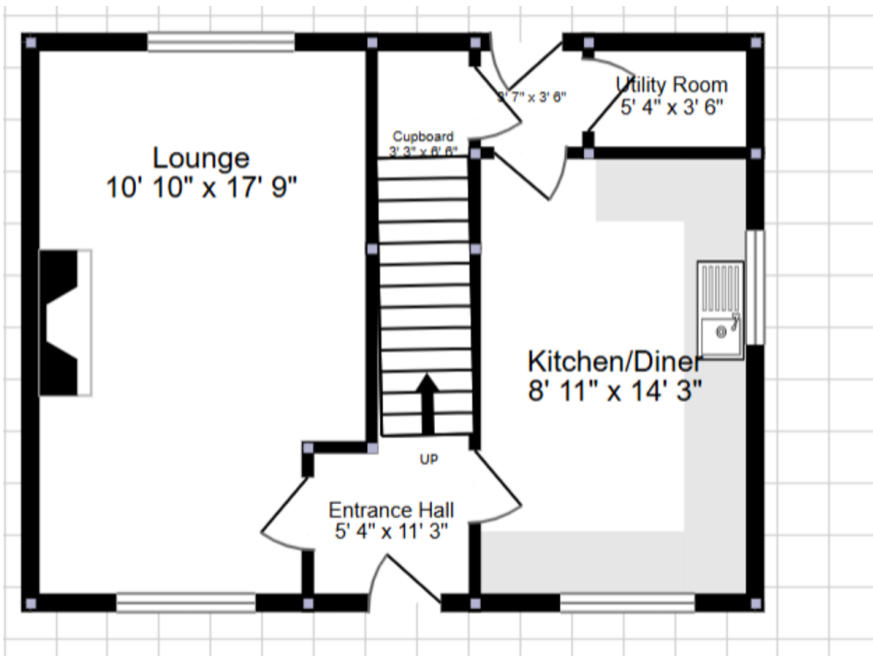
The accommodation briefly comprises a welcoming front entrance hallway, leading through to a good-sized lounge, ideal for relaxing or entertaining. To the rear, there is a spacious kitchen/diner offering plenty of scope for modernisation and redesign.

Upstairs, the property benefits from a landing area leading to three well-proportioned bedrooms, along with a shower room fitted with WC and sink.

Externally, the property occupies a desirable corner position with mature gardens to enjoy, providing both privacy and outdoor space. There is also the added benefit of off-road parking and a garage. The property is offered as freehold.

Located within the popular S5 area, the property benefits from excellent local amenities, including shops, schools, and transport links, making it ideal for families, first-time buyers, or investors alike. The area also provides easy access to Sheffield city centre, Northern General Hospital, and major road





Score	Energy rating	Current	Potential
92+	A		
81-91	B		
69-80	C	70 C	76 C
55-68	D		
39-54	E		
21-38	F		
1-20	G		

networks.

This is a fantastic opportunity to acquire a property with great potential in a well-established residential location.

****Disclaimer****

Please note that some of the images used in this marketing material may have been enhanced or digitally altered using artificial intelligence (AI) technology. These images are intended solely to illustrate the potential appearance of the property following possible improvements, renovations, or styling.

They should not be relied upon as an accurate representation of the property's current condition, layout, or fixtures and fittings. Prospective purchasers are advised to carry out their own inspections and due diligence to satisfy themselves as to the property's actual state and suitability.

All measurements, descriptions, and visual representations are provided for guidance only and do not form part of any offer or contract.

