

*tavistockbow*

**For Rent**



**People Make Places**



**Great Marlborough Street, Carnaby W1**

1 bedroom | 484 sq ft

£625 pw





Overlooking the iconic Liberty department store, this one bedroom apartment has an enviable location in the West End. On the first floor, with lift access, there is an open plan living space, a contemporary bathroom and spacious double bedroom. Available immediately, unfurnished.

#### What you need to know

- One bedroom
- One bathroom
- First floor with lift access
- Lift
- Wooden flooring throughout
- Unfurnished
- Secondary glazing
- Views of Liberty department store
- Available immediately
- Close to Oxford Circus underground station



**Great Marlborough Street, Carnaby W1**



## Overview

Modern throughout with wooden flooring and clean, contemporary finishes, this excellent one bedroom apartment enjoys an enviable position just moments from Carnaby Street, with views overlooking the iconic Liberty department store. Situated on the first floor with lift access, the flat offers a well-proportioned double bedroom, a bright open plan living space with fitted kitchen and gas hob, and a modern bathroom. Secondary glazing is installed for added comfort.

Perfectly located in the heart of the West End, the property is close to Oxford Circus and Regent Street, with a wealth of shopping, dining and entertainment options nearby. Kingly Court's popular restaurants are just moments away, as is the Courthouse Hotel, home to its impressive private cinema. A 24-hour security centre serves the building (please note there is no porter). Excellent transport links are within easy reach, including Oxford Circus Underground station (Central, Bakerloo and Victoria lines), along with numerous bus routes operating along Oxford Street and Regent Street.

The apartment is available immediately on an unfurnished basis. Subject to contract and satisfactory references, the landlord is offering a three-year lease with a mutual six-month break clause. Westminster Council tax band: F.



# People Make Places

London is a collection of inspiring urban villages and one of the most exciting places in the world to live, work & play.

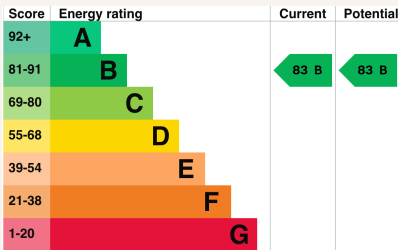
We work with both property owners and their occupiers, sharing the story of these vibrant neighbourhoods, conveying the unique soul & energy to future custodians, the people who'll keep them buzzing.

And unlike many real estate businesses we're not just about buildings, because streets & buildings don't make a neighbourhood.

We're about building relationships, because **people make places**.

MISINTERPRITATION ACT [COPYRIGHT] DISCLAIMER: Tavistock Bow Ltd for themselves and for the vendor(s) of this property whose agents they are, given notice that: 1. These particulars do not constitute, not constitute any part of, an offer or contract. 2. None of the statements contained in these particulars as to the property are to be relied on as statements or representations of fact. 3. Any intending purchaser or lessee must satisfy themselves by inspection or otherwise as to the correctness of each of the statements contained in these particulars. 4. The vendor(s) or lessor(s) do not make or give and neither Tavistock Bow Ltd nor any person in their employment has any authority to make or give any representation or warranty whatever in relation to this property. Finance Act 1989, Unless otherwise stated all prices and rents are quote exclusive of VAT. Property Misrepresentation Act 1991; These details are believed to be correct at the time of compilation but may be subject to subsequent amendment.

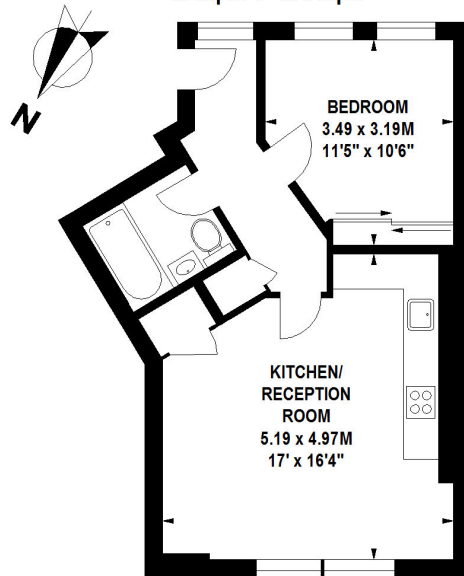
Follow us:     @tavistockbow



## Great Marlborough Street, W1

Approximate gross internal area

45 sq m / 484 sq ft



First Floor

**tavistockbow**

21 New Row, Covent Garden,  
London, WC2N 4LE

t: 020 7477 2177  
e: hello@tavistockbow.com  
w: tavistockbow.com



**Great Marlborough Street, Carnaby W1**