

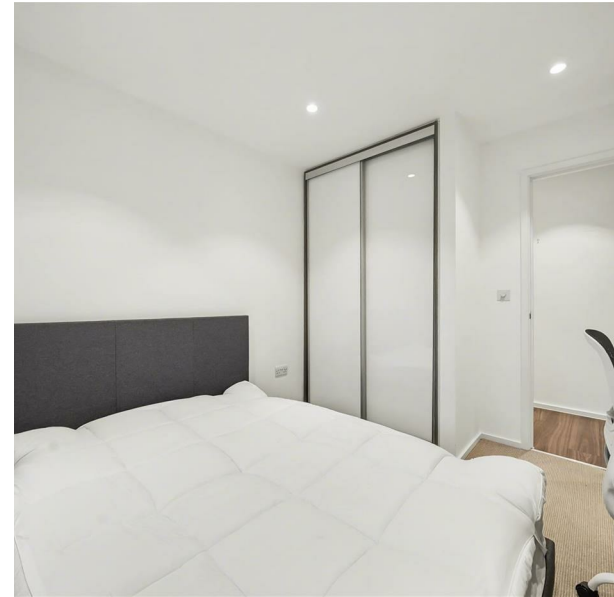
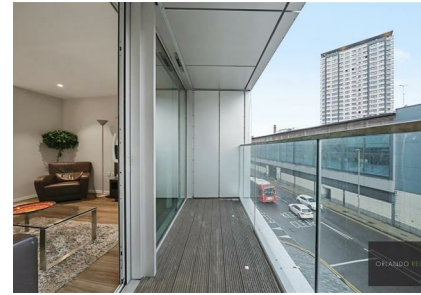
69, 10, Aurora Apartments Buckhold Road, London, SW18 4FW

£450,000

Council Tax Band: E



ORLANDO REID



A smart two-bedroom, two-bathroom apartment, located within Aurora Apartments, in the heart of Wandsworth Town Centre.

The property includes a spacious balcony space, 24-hour concierge and access to beautiful green communal gardens within the development. The flat has fitted wardrobes with sliding doors in each bedroom. The open plan kitchen is immaculately finished.

Aurora Apartments are ideally located in between East Putney Underground Station and Wandsworth Town Train Station (10 minutes' walk to both stations respectively). You can get to Oxford Circus in 30 minutes



ORLANDO REID

St Johns Court 19b Quay Street, Manchester, M3 3HN

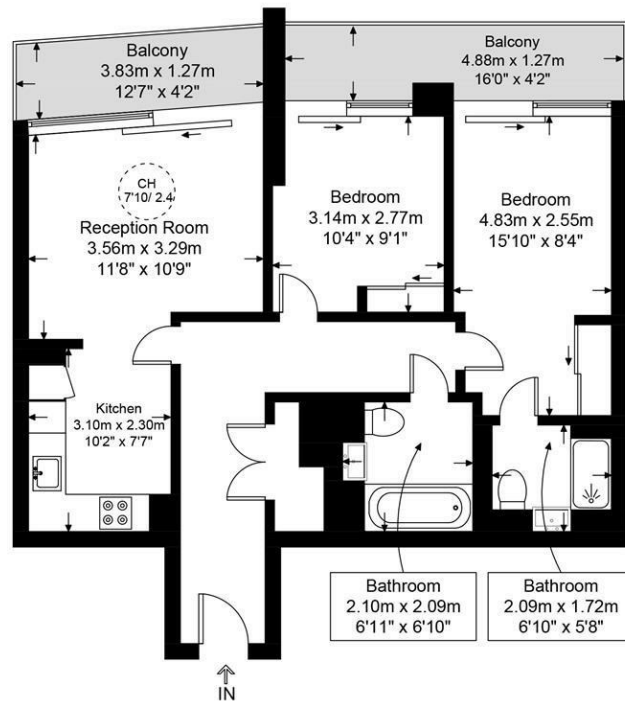
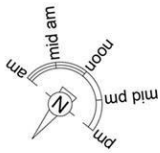
01616760099

manchester@orlandoreid.co.uk

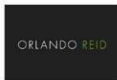
<https://www.orlandoreid.co.uk/manchester/>

Aurora Apartments, SW18

Approximate Gross Internal Area = 698 sq ft / 64.91 sq m



Second Floor



This plan is for layout guidance only and is not drawn to scale unless stated. All dimensions, including windows, doors, and the Total Gross Internal Area (GIA), are approximate. For precise measurements, please consult a qualified architect or surveyor before making any decisions based on this plan.



Energy Efficiency Rating		Current	Potential
Very energy efficient - lower running costs			
(92 plus)	A		
(81-91)	B	83	
(69-80)	C		
(55-68)	D		
(39-54)	E		
(21-38)	F		
(1-20)	G		
Not energy efficient - higher running costs			
England & Wales		EU Directive 2002/91/EC	