



**Guide Price**  
**£250,000**

**Leasehold**

2x  1x  1x 

**Trotwood, Chigwell,  
Essex, IG7**

**OVER 60?**

Secure this property  
for up to **59% less!**

 **DOUGLAS  
ALLEN**  
Helping you move forwards





## Main features

- **First floor flat**
- **Modern kitchen and bathroom**
- **Long lease**
- **Situated equally between Hainault and Grange Hill central line stations**
- **Perfect first home or buy-to-let investment**

## Accommodation

### FIRST FLOOR

hallway

bedroom 1: 12'8 x 9'4 (3.86m x 2.85m) narrowing to 6'10 x 9'1 (2.08m x 2.77m)

lounge: 13'9 x 11'4 (4.19m x 3.46m)

kitchen: 8'8 x 8'6 (2.64m x 2.59m)

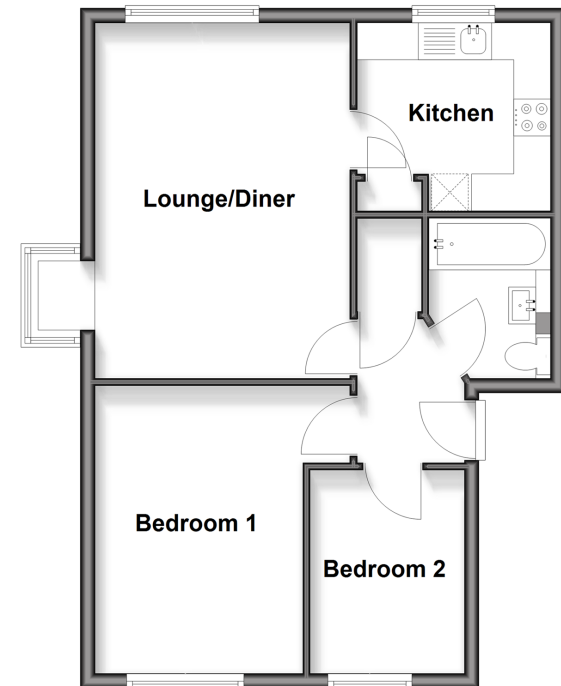
### OUTSIDE

Communal garden

Communal parking

### First Floor

Approx. 50.3 sq. metres (541.5 sq. feet)



**Call Chigwell - 020 8501 2131 ■ [douglasallen.co.uk](http://douglasallen.co.uk)**

- A private rental licensing scheme applies to some properties in this area, please check with the Local Authority before proceeding
- Appliances & services are untested, dimensions are approximate and floor plans are not to scale

- Legal advice should be taken to verify fixtures/fittings, planning, alterations and/or lease details
- Through a Homewise Home For Life Plan people aged 60+ can secure this property for up to 59% less, by purchasing a Lifetime Lease