

DAWSONS

Property Professionals since 1925

18/20 STAMFORD STREET STALYBRIDGE CHESHIRE TEL: 0161 338 2292

Website: www.wcdawson.com Email: reception@wcdawson.com



Marlborough Street, Ashton-under-lyne, OL7 0HH

Dawsons are pleased to offer for sale this garden fronted, two bedroom mid terraced property. The property offers good sized accommodation and rear garden. Located close to local schools, amenities, Guide Bridge Station and transport links. * Viewing recommended.*

In brief the accommodation comprises: Entrance hall, lounge, dining area and kitchen to the ground floor. Two bedrooms and a shower/wet room to the first floor.

Offers Over £160,000



**CHARTERED SURVEYORS, ESTATE AGENTS
& PROPERTY MANAGEMENT SPECIALISTS**



Marlborough Street, Ashton-under-lyne, OL7 0HH

- Garden Fronted Mid Terraced
- Gas Central Heating
- Two bedrooms
- Close to Local Amenities
- uPVC Double Glazing
- Nearby Transport Links

GROUND FLOOR

Entrance

uPVC door to front, stairs to first floor, door to:

Lounge

12'8 x 10'8 (3.86m x 3.25m)

UPVC double glazed window, laminate flooring, central heating radiator, open to:

Dining Area

15'9 x 7'4 (4.80m x 2.24m)

Laminate flooring, door leading to:

Kitchen

8'1 x 7'3 (2.46m x 2.21m)

uPVC double glazed window, fitted with a range of wall and base units with work surface over, inset sink and drainer, tiled splashbacks, plumbed for automatic washing machine, space for cooker and fridge/freezer.

FIRST FLOOR

Landing

Access to loft, door to:

Bedroom (1)

12'10 x 9'3 (3.91m x 2.82m)

UPVC double glazed window, central heating radiator, built-in storage cupboard.

Bedroom (2)

9'0 x 7'2 (2.74m x 2.18m)

UPVC double glazed window, central heating radiator.

Shower / Wet Room

uPVC double glazed window, fitted with a Mira thermostatic shower, pedestal wash hand basin, low level WC, part tiled walls, central heating radiator.

Externally

Forecourt Garden. To the rear there is a larger than average enclosed garden area which is mainly paved for low maintenance.

Tenure

The property is freehold with a chief rent charge (to be confirmed by solicitors)

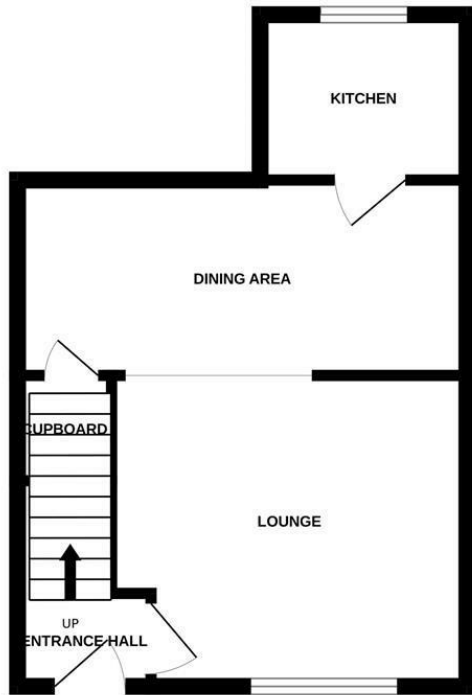


Directions

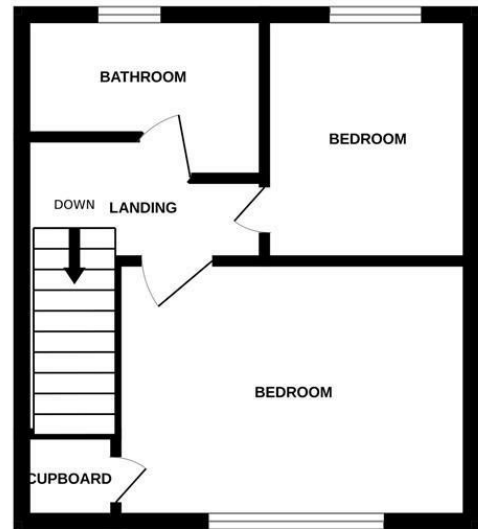


Floor Plan

GROUND FLOOR



1ST FLOOR



Whilst every attempt has been made to ensure the accuracy of the floorplan contained here, measurements of doors, windows, rooms and any other items are approximate and no responsibility is taken for any error, omission or mis-statement. This plan is for illustrative purposes only and should be used as such by any prospective purchaser. The services, systems and appliances shown have not been tested and no guarantee as to their operability or efficiency can be given.
Made with Metropix ©2025

These particulars, whilst believed to be accurate are set out as a general outline only for guidance and do not constitute any part of an offer or contract. Intending purchasers should not rely on them as statements of representation of fact, but must satisfy themselves by inspection or otherwise as to their accuracy. No person in this firm's employment has the authority to make or give any representation or warranty in respect of the property.

