

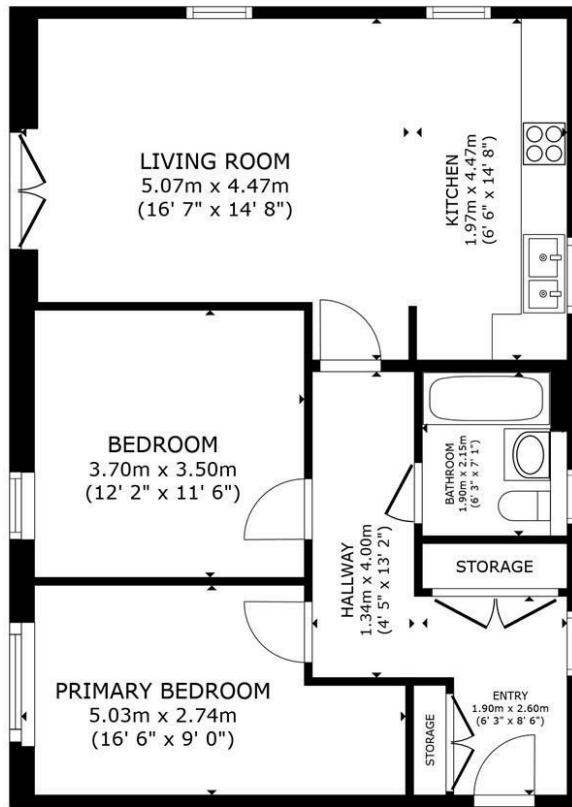


FLAT 2 ORION COURT, 10 WILLIAM BELT ROAD

£280,000
LEASEHOLD

- TWO BEDROOM GROUND FLOOR FLAT
- MODERN KITCHEN WITH INTEGRATED APPLIANCES OPEN TO LIVING AREA
- MODERN BATHROOM WITH SHOWER OVER BATH
- GUIDE PRICE £280,000 - £290,000
- BRIGHT AND SPACIOUS OPEN PLAN LIVING AREA
- TWO DOUBLE BEDROOMS
- TWO ALLOCATED PARKING SPACES





FLOOR PLAN

ELTONS

GROSS INTERNAL AREA
 FLOOR PLAN 72.5 m² (780 sq.ft.)
 TOTAL : 72.5 m² (780 sq.ft.)
 SIZES AND DIMENSIONS ARE APPROXIMATE, ACTUAL MAY VARY.



Energy Efficiency Rating		
	Current	Potential
Very energy efficient - lower running costs		
(92 plus) A		
(81-91) B	83	83
(69-80) C		
(55-68) D		
(39-54) E		
(21-38) F		
(1-20) G		
Not energy efficient - higher running costs		
England & Wales	EU Directive 2002/91/EC	

Agents Note: Whilst every care has been taken to prepare these particulars, they are for guidance purposes only. All measurements are approximate and are for general guidance purposes only and whilst every care has been taken to ensure their accuracy, they should not be relied upon and potential buyers/tenants are advised to recheck the measurements

Eltons Estate Agents Horsham 01403 299 771
 13 - 15 Queen Street sales@eltons.co.uk
 Horsham eltons.co.uk
 West Sussex
 RH13 5AA

ELTONS
 Estate Agents