



Guide Price
£220,000

Freehold

2x  1x  1x 

**Boundary Road,
Ramsgate, Kent, CT11**

OVER 60?

Secure this property
for up to **59% less!**

Wards
Helping you move forwards



Main features

- An ideal first time buy
- Just a short walk to both the town and train station
- Original features, character and charm throughout
- Spacious family bathroom
- Low maintenance rear garden

Accommodation

GROUND FLOOR

Entrance Hallway

Lounge : 13'3 x 10'2 (4.04m x 3.10m)

Dining Area: 10'9 x 10'3 (3.28m x 3.13m)

Kitchen : 10'4 x 7'10 (3.15m x 2.39m)

SPLIT LEVEL FIRST FLOOR

Landing

Bedroom 1 : 13'4 x 11'5 (4.07m x 3.48m)

Bedroom 2 : 11'4 x 8'3 (3.46m x 2.52m)

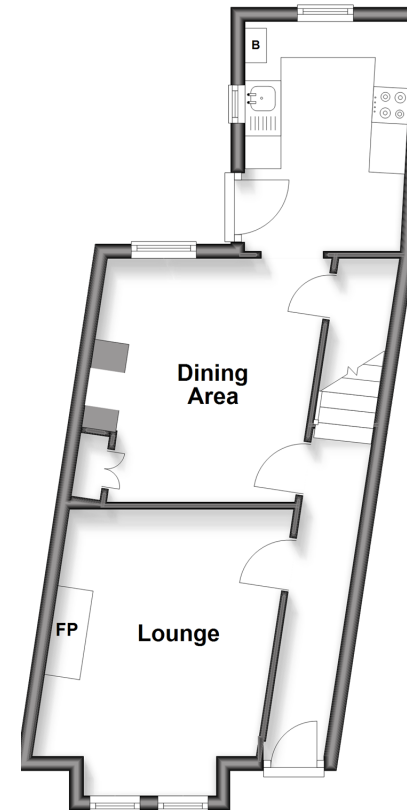
Bathroom

OUTSIDE

Gardens to Front and Rear

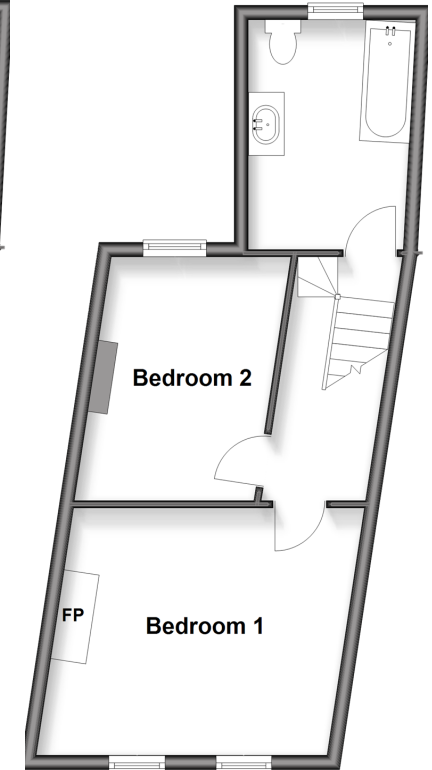
Ground Floor

Approx. 36.8 sq. metres (395.7 sq. feet)



Split Level First Floor

Approx. 35.8 sq. metres (384.8 sq. feet)



Call Ramsgate - 01843 580314 ■ wardsokent.co.uk

- Legal advice should be taken to verify fixtures/fittings, planning, alterations and/or lease details
- Appliances & services are untested, dimensions are approximate and floor plans are not to scale
- Through a Homewise Home For Life Plan people aged 60+ can secure this property for up to 59% less, by purchasing a Lifetime Lease



11434892/20260203/ATN/AP