



Tollington Park, N4

£400,000

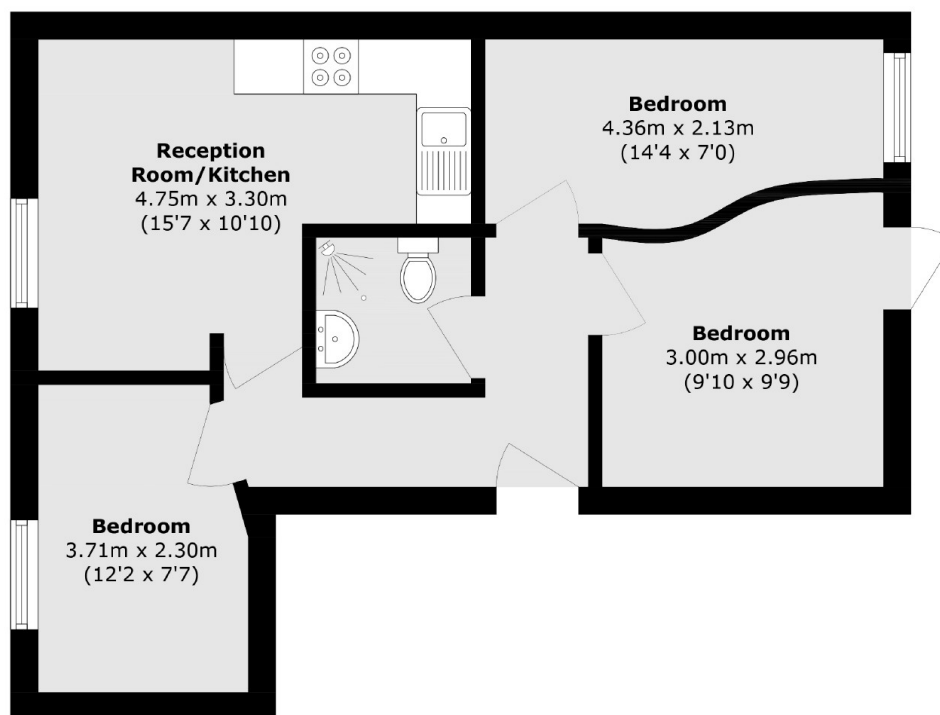
A well-presented first floor three bedroom apartment, set in this modern development. The property features a bright, open plan reception room and a thoughtfully designed layout, perfect for modern living.

Plough Apartments is ideally located on Tollington Park, providing easy access to excellent transport links to the City and West End from Finsbury Park underground station, just 0.8 miles away.

Features

- First Floor
- Three Bedrooms
- Open Plan Living
- Private Access
- Excellent Location
- Great Transport Links

Tollington Park, London, N4



Total area (approx.): 50.5 sq. m (543.5 sq. ft)