

Ryecroft Meadow, Mannings Heath

Guide Price £525,000

3 1 2



An Exciting Opportunity to purchase a Beautifully Presented Detached Family Home, tucked away towards the end of a Small Cul De Sac in a popular village, offering Enormous Potential to extend (stpp).

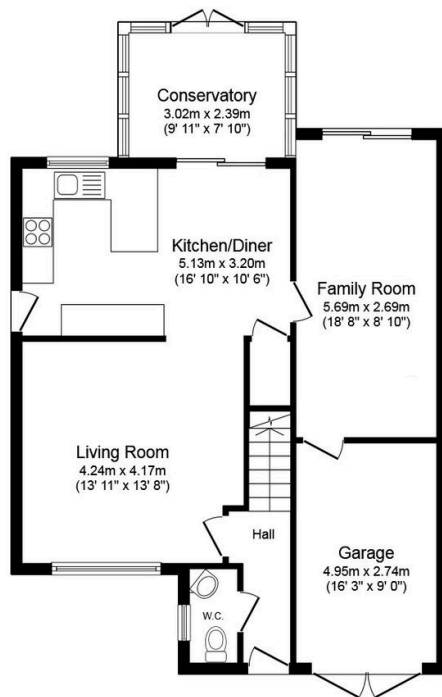
Tenure: Freehold

Council Tax Band: E

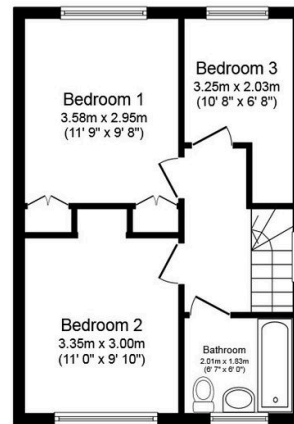
EPC: Current D - Potential C

Key Features

- Watch Our Video Tour
- Open Plan Layout
- Family Room/Bedroom 4
- Large Private Rear Garden
- Driveway & 16ft Garage
- Beautifully Presented Family Home
- Stylish 16ft Kitchen Diner
- Potential To Extend (stpp)
- Luxurious Family Bathroom
- Cul De Sac Location



Ground Floor



First Floor

Total floor area 116.8 m² (1,257 sq.ft.) approx

This plan is for illustration purposes only and may not be representative of the property. Plan not to scale. Powered by PropertyBox