



Let **UK** Home

1 Bedrooms

Flat

**Located
in Manchester**

£1,500 Per Month



pmadmin@letukhome.co.uk

<https://www.letukhome.co.uk/>

01615219812



Whitworth Street Manchester

M1 3AR



Let UK Home are excited to offer this modern one-bedroom apartment located in the heart of City Centre in the exciting development, Manchester New Square.

The flat comprises a spacious open kitchen with a stylishly attached dining area, a magnificent living room, one bright bedroom with built-in wardrobes, one modern bathroom and ample storage.

This luxury canal-side development will offer fantastic on-site amenities including bike storage, concierge service and wellness centre.

Located at the intersection of Whitworth Street and Princess Street in the prime location of Manchester. Coffee shops, boutiques, restaurants, art & cultural centers, world-class universities, and large shopping malls are all available. It's just a few minutes' walk to the city's attractions and transport hubs. For commuters, you are in easy reach of Oxford Road or Piccadilly train station. Residents and visitors alike will benefit from the artisan restaurants and retailers on the ground floors.

Additionally, Manchester Metropolitan University and the University of Manchester are within a short walking distance, saving on commuting time and costs. For those heading to the University of Salford, it's just a short bus ride away.

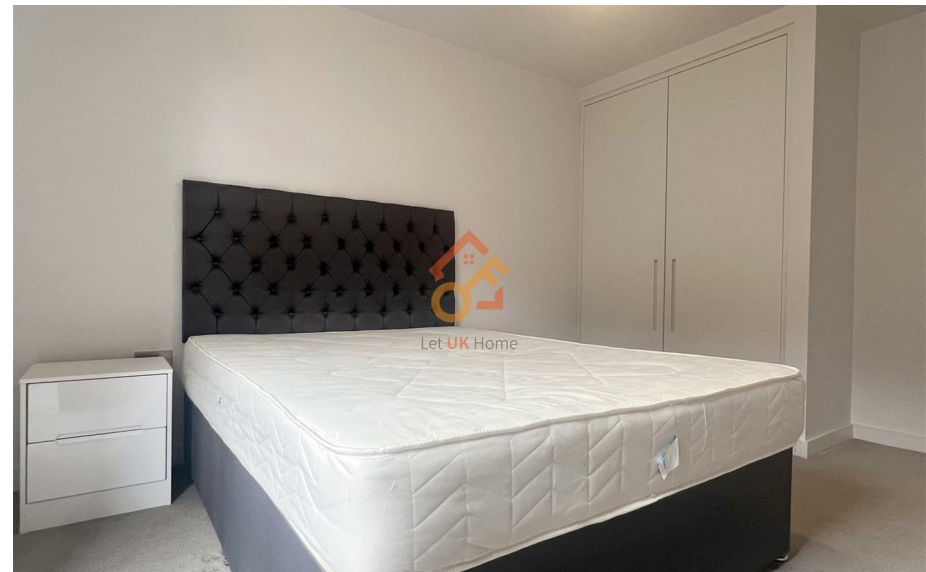
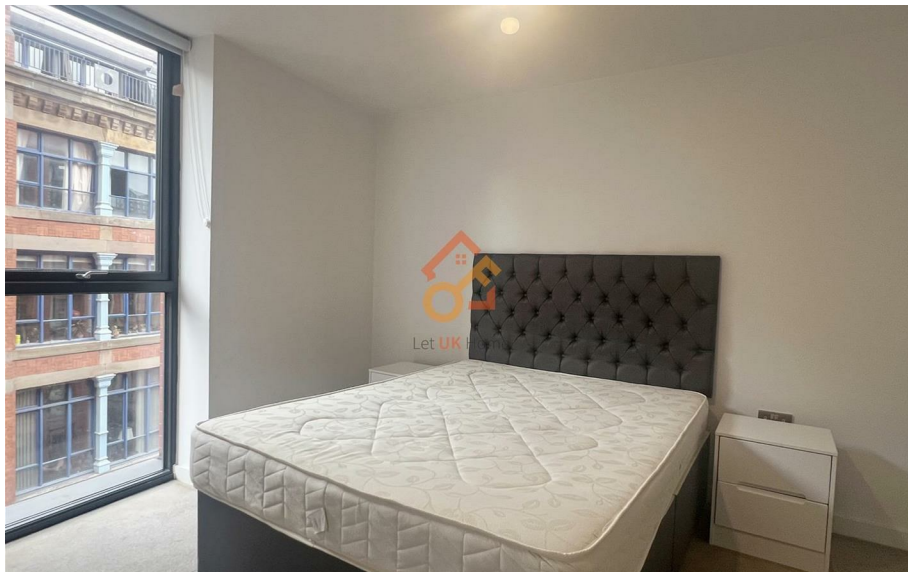
Whitworth Street Manchester

£1,500 Per Month



- 5th Floor
- 24h Security
- The Gym
- Walk to UoM & MMU
- EPC Rating: B

- Concierge Service
- The Spa
- Swimming Pool
- Walk to Oxford Road or Piccadilly train station



1 BEDROOM APARTMENT TYPE 1-08-A

Level	1-6
Number of Bedrooms	1
Sq m	55.9
Sq ft	602

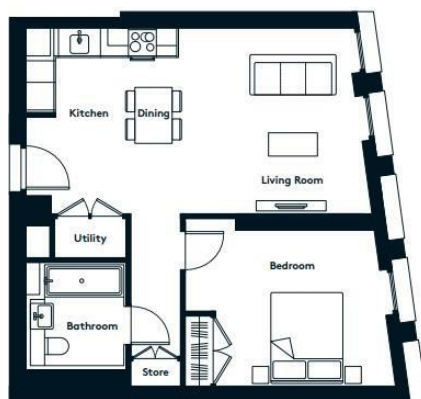


Let **UK** Home

1/F, St James Tower 7 Charlotte
Street
Manchester
M1 4DZ

01615219812

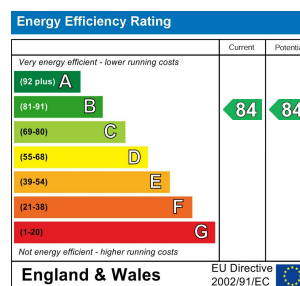
pmadmin@letukhome.co.uk



Council Tax Band: D

Local Authority:

Agents Note: Whilst every care has been taken to prepare these particulars, they are for guidance purposes only. All measurements are approximate and are for general guidance purposes only and whilst every care has been taken to ensure their accuracy, they should not be relied upon and potential buyers/tenants are advised to recheck the measurements.



<https://www.letukhome.co.uk/>