

## 9 Millbank London

**£1,500 Per Week**

This stunning property is available to rent in the exclusive Millbank Quarter, 9 Millbank. Situated in the central location of Westminster, this two bedroom apartment has been finished to the highest standard. Resident facilities include a 24 hour concierge service, residents cinema, meeting rooms, gym, pool and spa.

Council tax band: Westminster G  
Change of contract fee: £50 including VAT  
Lift access | Cladding: EWS1 Certificate available  
Holding Deposit: £1,500 (1 weeks rent)

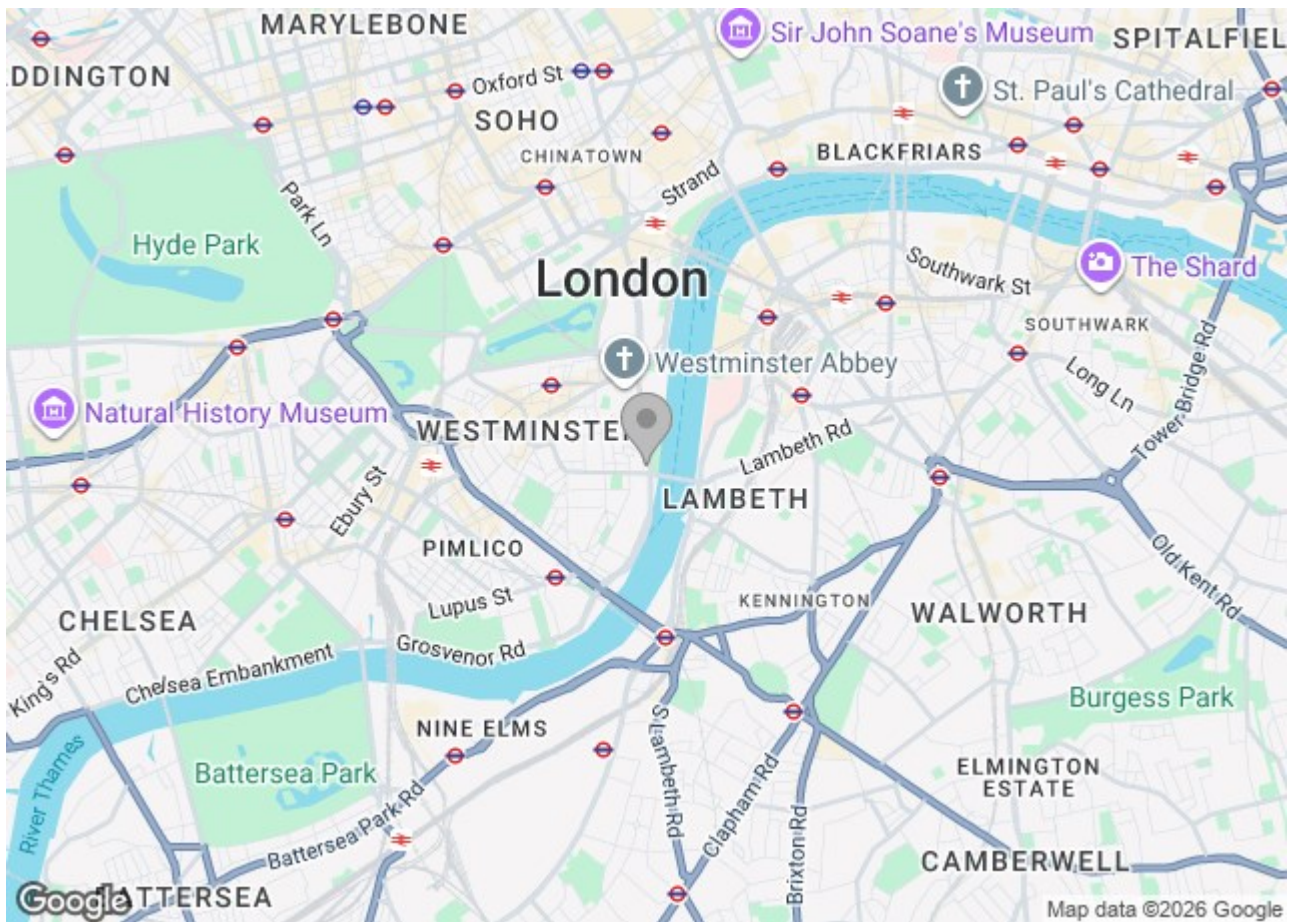
Electricity supply – Mains | Cold Water supply – Mains | Sewerage – Mains | Hot water, heating & comfort cooling –Mains | | Internet: Fttp

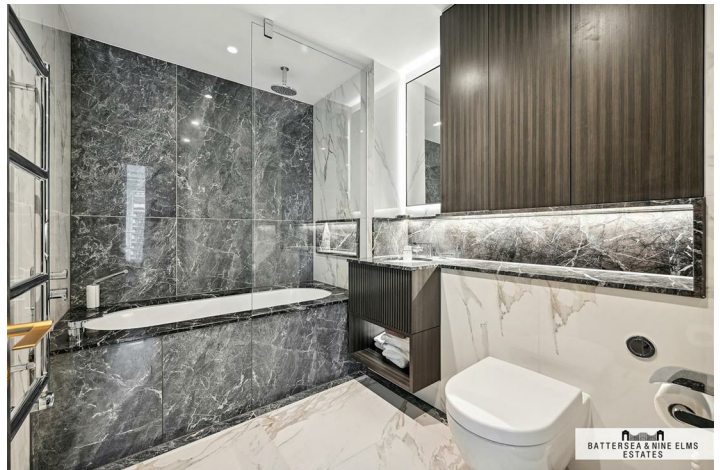
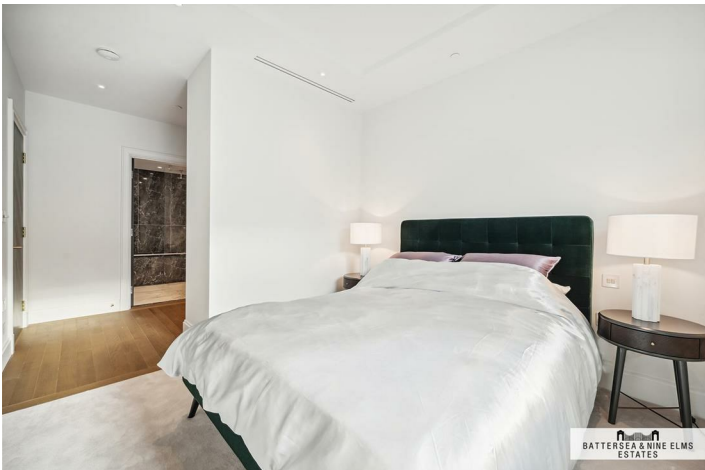
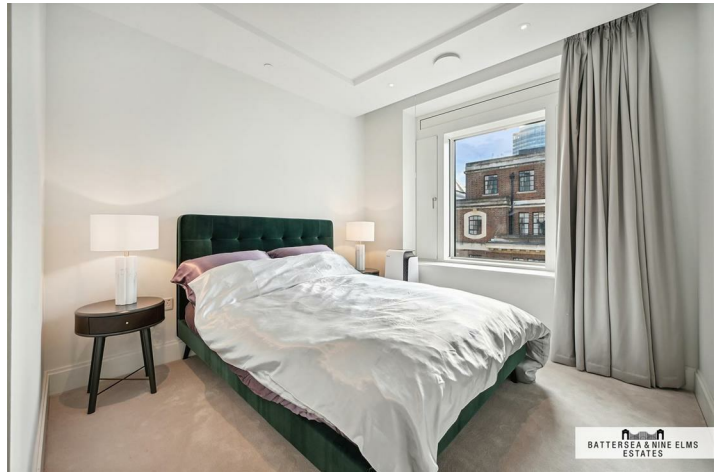
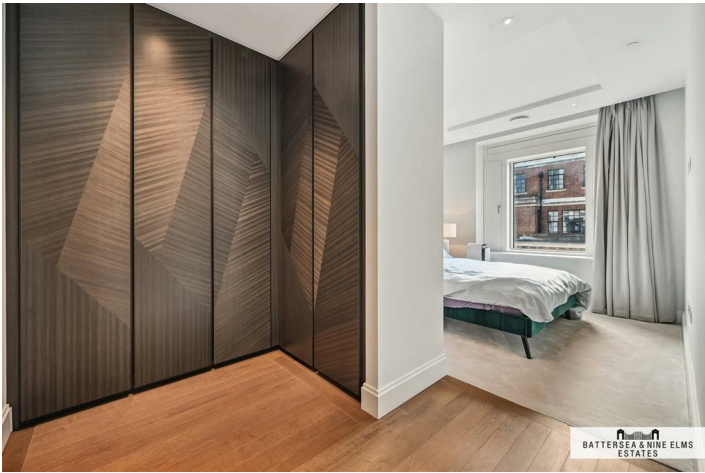
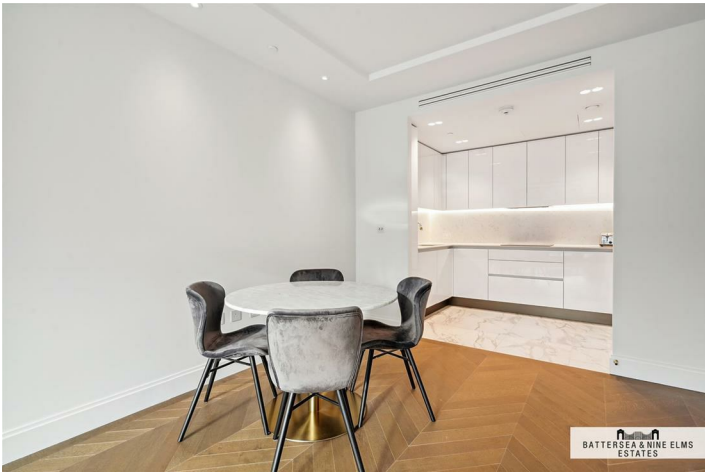
To check broadband and mobile phone coverage please visit Ofcom.

## 9 Millbank London



- Underfloor heating & comfort cooling
- 24 Hour concierge
- Two Double Bedrooms
- On-site gym, pool and spa
- Two Bathrooms
- Zone 1 Transport Links







Milbank, SW1P  
 Approximate Gross Internal Area  
 84 sq m / 901 sq ft

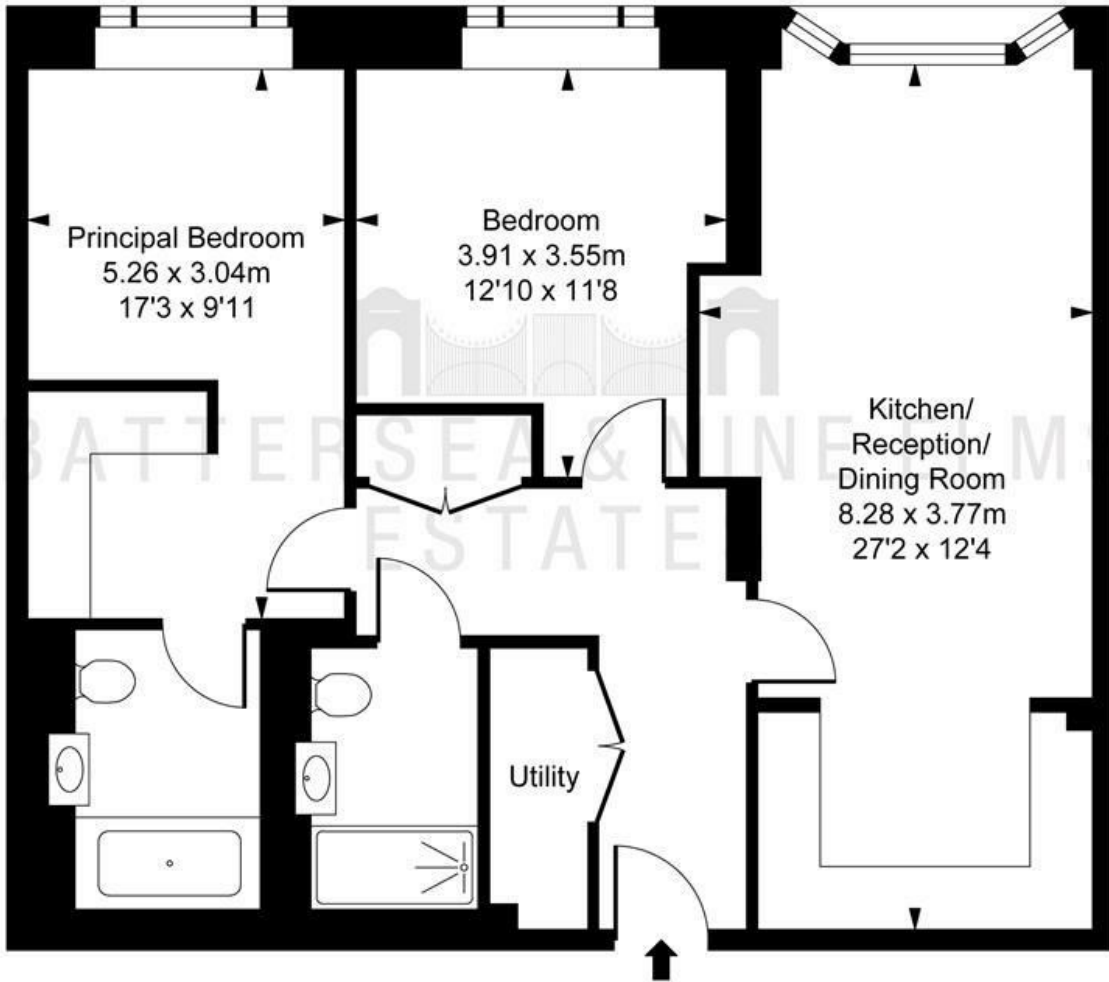


ILLUSTRATION FOR IDENTIFICATION PURPOSES ONLY  
 ALL MEASUREMENTS AND AREA FIGURES SUPPLIED BY OTHERS, ACCURACY IS NOT GUARANTEED.  
 THIS PLAN MUST NOT BE REPRODUCED BY ANY OTHER PERSON WITHOUT PERMISSION

These particulars, whilst believed to be accurate are set out as a general outline only for guidance and do not constitute any part of an offer or contract. Intending purchasers should not rely on them as statements of representation of fact, but must satisfy themselves by inspection or otherwise as to their accuracy. No person in this firm's employment has the authority to make or give any representation or warranty in respect of the property.

Energy Efficiency Rating		Current	Potential	Environmental Impact (CO <sub>2</sub> ) Rating		Current	Potential
Very energy efficient - lower running costs	(92 plus) <b>A</b>			Very environmentally friendly - lower CO <sub>2</sub> emissions	(92 plus) <b>A</b>		
	(81-91) <b>B</b>				(81-91) <b>B</b>		
	(69-80) <b>C</b>				(69-80) <b>C</b>		
	(55-68) <b>D</b>				(55-68) <b>D</b>		
	(39-54) <b>E</b>				(39-54) <b>E</b>		
	(21-38) <b>F</b>				(21-38) <b>F</b>		
	(1-20) <b>G</b>				(1-20) <b>G</b>		
Not energy efficient - higher running costs				Not environmentally friendly - higher CO <sub>2</sub> emissions			
<b>England &amp; Wales</b>		<b>85</b>	<b>85</b>	<b>England &amp; Wales</b>			
	EU Directive 2002/91/EC				EU Directive 2002/91/EC		