



Salisbury Road, NW6

£550,000

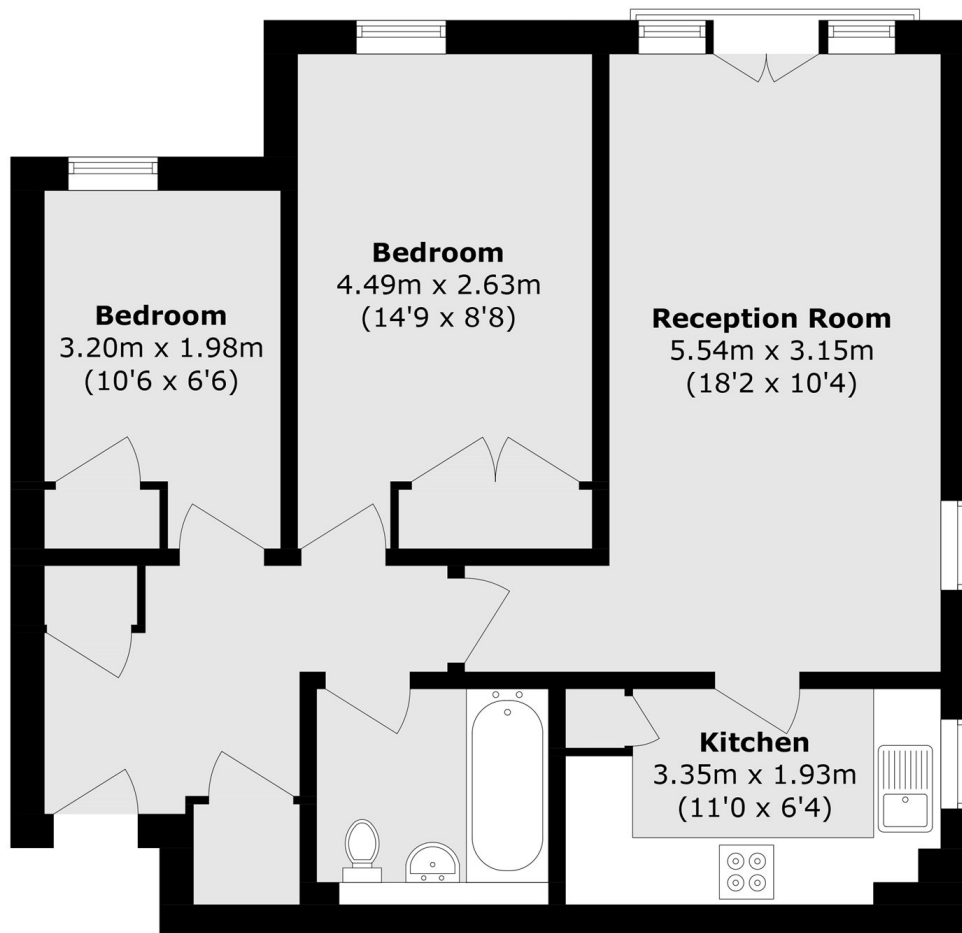
This beautifully presented two-bedroom flat is situated on the second floor of a well-maintained apartment building. The property features a separate reception room with double doors opening onto a Juliet balcony, offering views over the communal gardens and beyond. Further benefits include off-street parking.

St. Annes Court is a desirable residential development ideally positioned moments from the boutique shops, cafés, and amenities of Salisbury Road, making it a superb location for convenient and vibrant living.

Features

- Two Bedrooms
- Separate Reception
- Close to Transport
- Allocated Parking Space
- Lift Access
- Chain Free

Salisbury Road, London, NW6



Total area (approx.): 56.9 sq. m (612.4 sq. ft)