



Battersea Park Road, SW11

£575,000

Dexters



Battersea Park Road, SW11

An impressive apartment measuring circa 800 Sq Ft located on the popular Battersea Park Road. Offering a large reception/dining room, separate kitchen, two double bedrooms, two bathrooms (inc en suite) and large outside space (roof terrace). The property benefits further from being sold chain free.

You enter into a central hallway that leads through to a spacious reception room, where double doors open directly onto the private balcony, creating a bright and sociable living space. Just off the reception is a separate kitchen, well-positioned for everyday living and entertaining. The accommodation includes two well-proportioned bedrooms, both set away from the main living area, along with a family bathroom and a separate WC, providing a practical and well-balanced layout.

Battersea Park Road is a sought after road near Battersea Park and the iconic Battersea Power Station. Located conveniently for easy access into the Kings Road in Chelsea and the busy Sloane Square. Clapham Junction railway station is also a short walk away.

Features

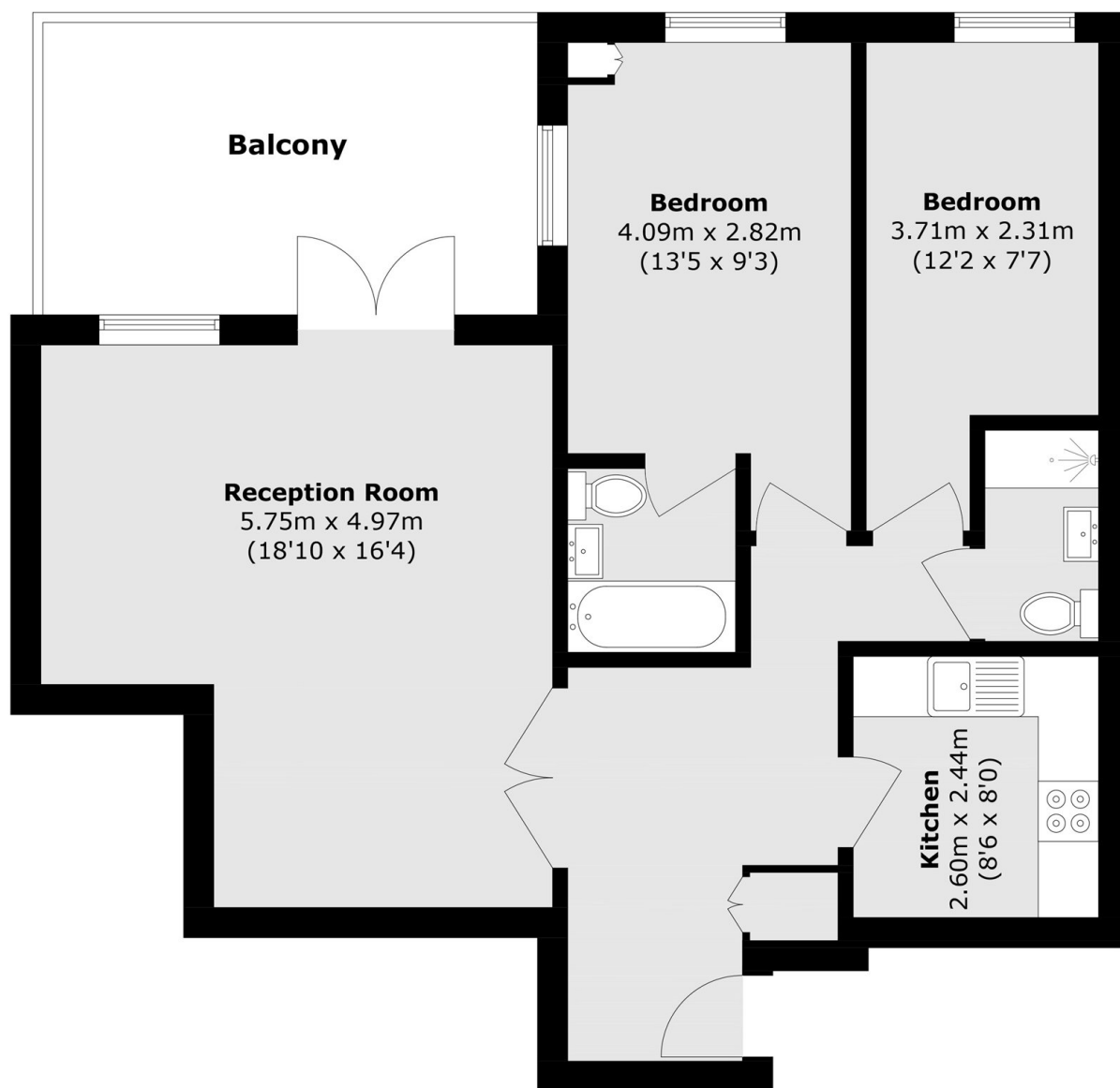
- Two Double Bedrooms
- Two Bathrooms
- Large Reception Room
- Separate Kitchen
- Private Roof Terrace
- Chain Free







Battersea Park Road, London, SW11



Total area (approx.): 74.2 sq. m (798.6 sq. ft)
Balcony area (approx.): 14.8 sq. m (159.3 sq. ft)