



## Bailey Street, SE8

£2,100 Per calendar month

A one bedroom property in a new build development in Surrey Quays. This unit offers open plan living, floor to ceiling windows and a spacious private patio. The development also offers access to a concierge, gym and communal roof terrace.

Gothenburg Court is located in a new development in the heart of Surrey Quay. Transport options include the underground and overground as well as numerous bus links. There are also plenty of local amenities at Surrey Quays Shopping Centre.

### Features

- One Double Bedroom
- Large Patio
- Concierge
- Communal Terrace
- Parking Available

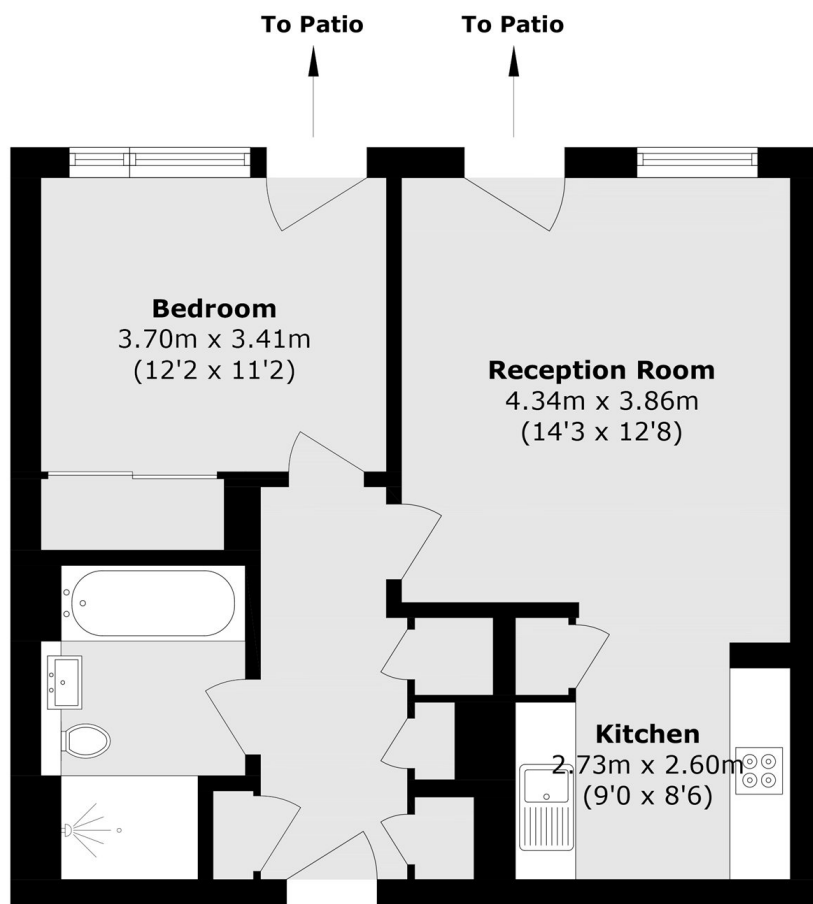


## Bailey Street, SE8

A one bedroom property in a new build development in Surrey Quays. This unit offers open plan living, floor to ceiling windows and a spacious private patio.



# Bailey Street, London, SE8



## First Floor

Total area (approx.): 51.9 sq. m (558.7 sq. ft)