



CARLOW STREET, NW1

£2,100 pcm

Welcome to Carlow House and this stunning studio apartment located within this all private development of exclusive loft style apartments with award winning designed interior.



ABOUT THE HOME

Welcome to Carlow House and this stunning studio apartment located within this all private development of exclusive loft style apartments with award winning designed interior. ||This landmark building consists of striking art deco facade and retained warehouse type features including two lifts serving this property. The magnificent 4 storey atrium lighwell with floating planters at upper levels feature oriental style planting and exposed wall finish. ||Tenants not only benefit from a concierge and secure cycle store but also luxurious apartment specifications with a fusion of classic 1930

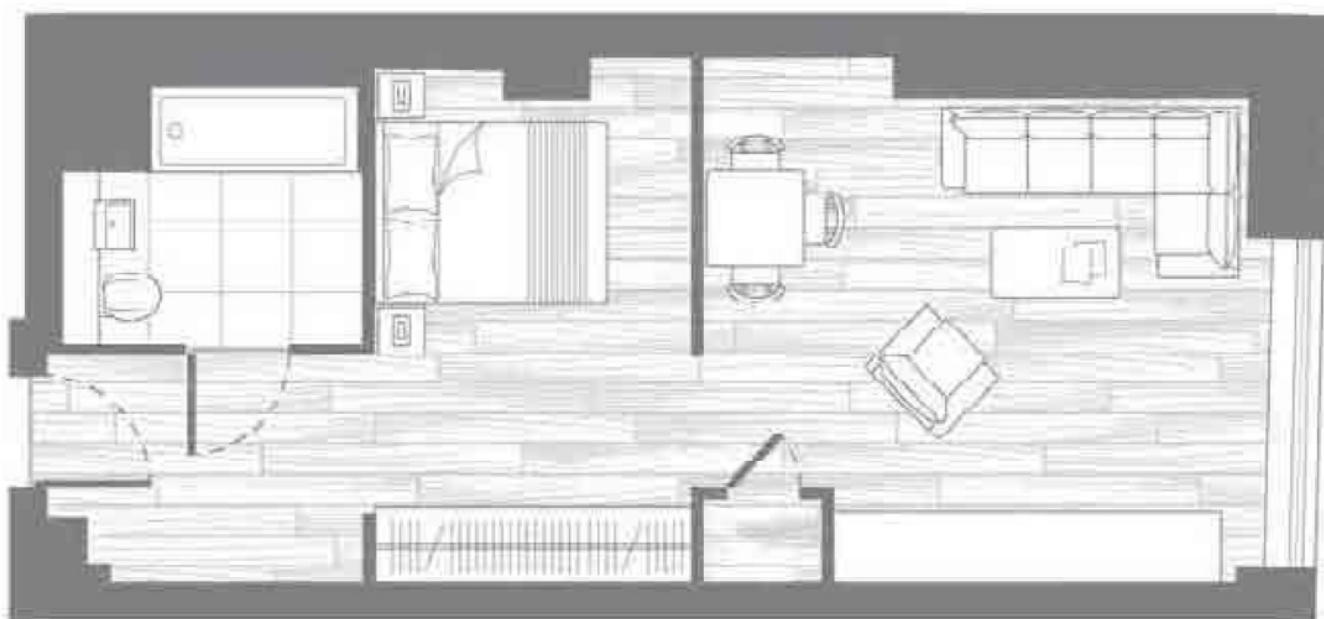




LIFE
Residential



LIFE
Residential



Total area: 41.9 sq.m. 451 sq.ft.

LiFE RESIDENTIAL

71 Drayton Park, London, N5

1BF

Sales: 020 3838 8666

Lettings: 020 7359 4488

Energy Rating: B. We aim to make our particulars both accurate and reliable. However they are not guaranteed; nor do they form part of an offer or contract. If you require clarification on any points then please contact us, especially if you're traveling some distance to view. Please note that appliances and heating systems have not been tested and therefore no warranties can be given as to their good working order.