



Upper Grosvenor Street, W1K

£54,167 Per calendar month

Dexters



Upper Grosvenor Street, W1K

An impressive four bedroom split-level apartment with modern appliances, 18th century period features and high ceilings throughout.

The property benefits from a lift and has been designed to create a stunning entertaining space and includes an integrated security and sound system as well as air conditioning throughout.

The apartment boasts 4 meter ceiling heights on the ground floor, a stunning double reception room with working gas fireplace and a modern fully fitted kitchen with connecting dining room. There is also a study and guest cloakroom.

The lower ground floor consists of a stunning master bedroom with direct access to the main patio, large walk in wardrobe and stunning principle suite. There are three further bedrooms and three bathrooms on the lower ground floor as well as a smaller patio.

Situated off of Grosvenor Square, this apartment is conveniently located for Hyde Park. Nearby underground stations include Bond Street (Central, Jubilee and Elizabeth lines), Marble Arch (Central Line) and Hyde Park (Piccadilly line).

Features

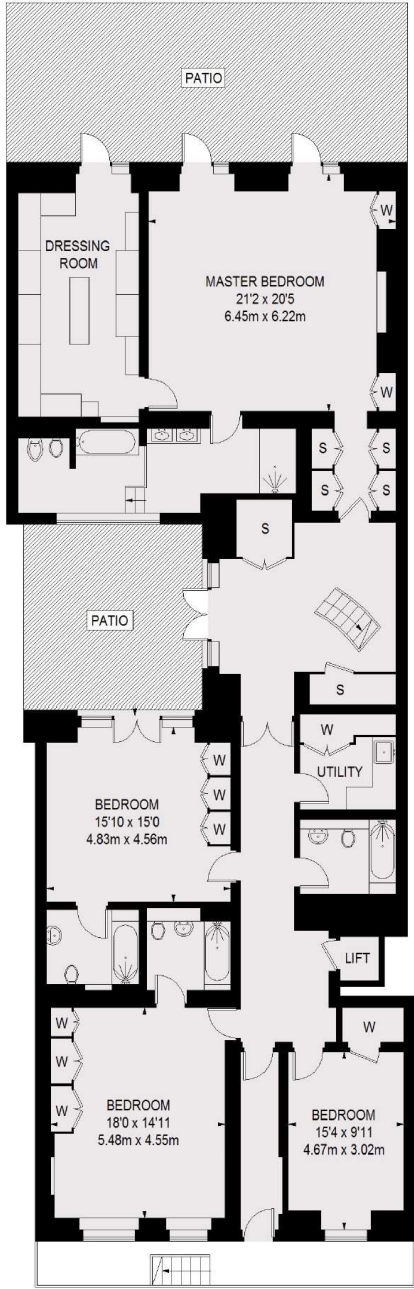
- Four Bedrooms
- Guest Cloakroom
- John Cullen Lighting
- Integrated Sound System
- Air Conditioning
- Private Patio



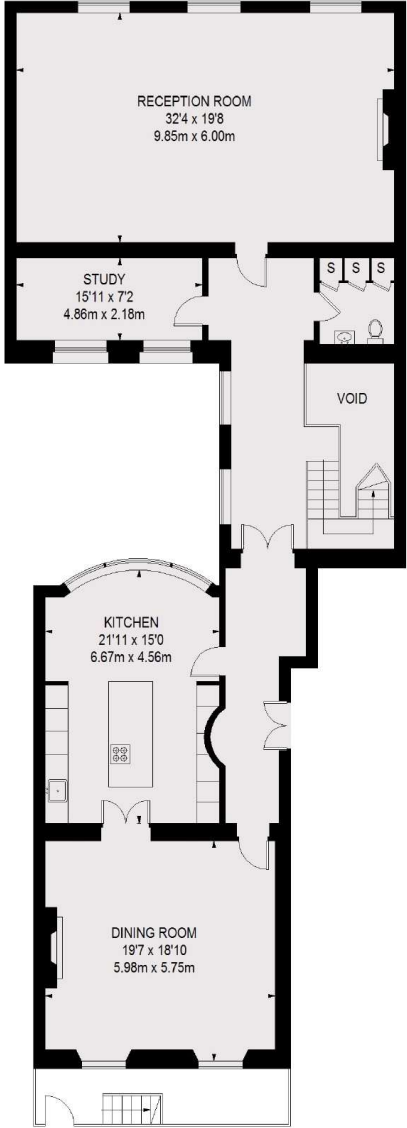




Upper Grosvenor Street, London, W1K



LOWER GROUND FLOOR



GROUND FLOOR

TOTAL APPROX. FLOOR AREA (EXCLUDING VOID / LIFT)
4291 SQ. FT. (398.65 SQ. M)



Wetherell
102 Mount Street
London
W1K 2TH
Lettings
020 7529 5588

Energy Rating: C. We aim to make our particulars both accurate and reliable. However they are not guaranteed; nor do they form part of an offer or contract. If you require clarification on any points then please contact us, especially if you're traveling some distance to view. Please note that appliances and heating systems have not been tested and therefore no warranties can be given as to their good working order.



dexters.co.uk