



Compayne Gardens

London, NW6

£3,500 per month
(£807.69 per week)

Superbly presented two double bedroom apartment, occupying the top level of this elegant period conversion. The property comprises two generous double bedrooms (one with en-suite), in addition there is a well proportioned modern bathroom suite and large, south facing 24ft lounge with open plan kitchen diner and stunning eave aspects. Further benefits include high ceilings, an abundance of natural light, wood floors throughout and gas central heating. Located just moments from Finchley Road's Metropolitan and Jubilee line (zone 2) and various transport links, coffee shops, restaurants, shopping and entertainment facilities.

CHESTERTONS



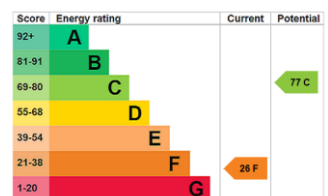
Compayne Gardens

London, NW6

- 2 Double Bedrooms
- Large Reception Room
- Second Floor Walk Up
- Unfurnished
- 2 Bathroom



Deposit Required: £4,038.46
Local Authority: London Borough Of Camden
Council Tax Band: F
EPC Rating: F
Unfurnished



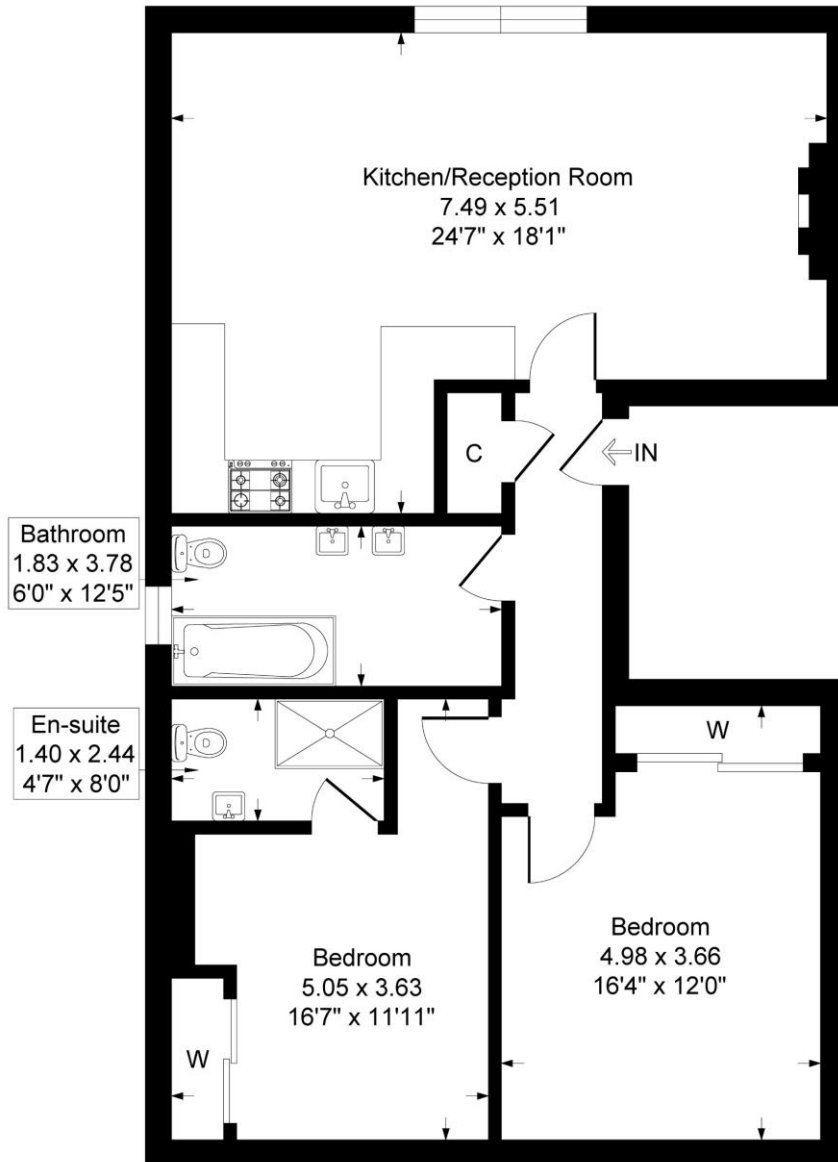
Chestertons Hampstead Lettings

55-56 Hampstead High Street
Hampstead
London
NW3 1QH
hampsteadlettingsusers@chestertons.co.uk
02077941125
chestertons.co.uk

Additional tenant charges apply (fees apply to non-AST tenancies only)
Tenancy Agreement Fee: £300
References per Tenant/Guarantor: £60
Inventory check (approx. £100 – £250 inc. VAT)
chestertons.co.uk/property-to-rent/applicable-fees

Compayne Gardens, London, NW6

Approximate Gross Internal Floor Area = 85.4 sq m / 920 sq ft



Third Floor

Illustration for identification purposes only, measurements are approximate, not to scale.

