



Price
£500,000

Freehold

3x  2x  1x 

**Chatfield Way, East
Malling, Kent, ME19**

Wards
Helping you move forwards



Main features

- Well presented with neutral decor throughout
- Garage and driveway
- Open plan lounge/diner with cosy log burner
- Modern fitted kitchen with integrated appliances
- Close proximity to local amenities

Accommodation

GROUND FLOOR

Entrance Hall

Cloakroom

Lounge Area: 16'4 x 10'7 (4.98m x 3.23m)

Dining Area: 10'3 x 8'8 (3.13m x 2.64m)

Kitchen: 10'3 x 9'1 (3.13m x 2.77m)

Conservatory: 17'8 x 7'6 (5.39m x 2.29m)

FIRST FLOOR

Landing

Bedroom 1: 12'7 x 11'4 (3.84m x 3.46m)

En-Suite Shower Room

Bedroom 2: 11'2 x 10'2 (3.41m x 3.10m)

Bedroom 3: 10'6 x 6'10 (3.20m x 2.08m)

Bathroom

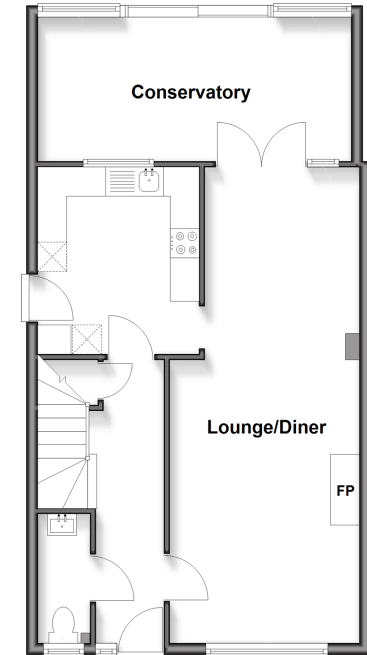
OUTSIDE

Front and Rear Gardens

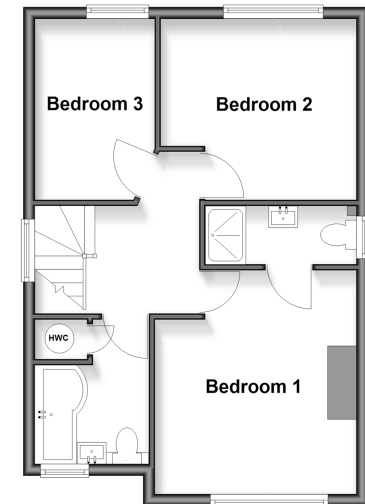
Garage

Driveway with EV Charger

Ground Floor
Approx. 57.7 sq. metres (620.8 sq. feet)



First Floor
Approx. 44.4 sq. metres (478.4 sq. feet)



12900RMB/20260505/TT/HS1

Call Larkfield - 01732 847877 ■ wardsof Kent.co.uk