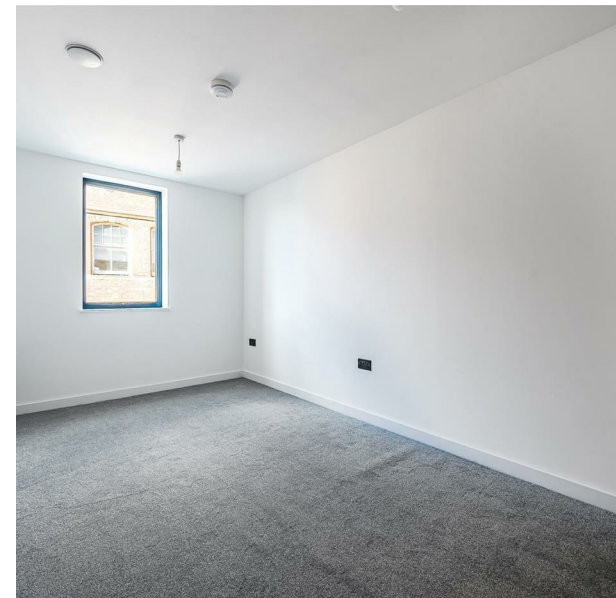


Apartment 6 Scholars Quarter 22 Legge Lane, Birmingham, B1 3LW
£1,400 Per month
Council Tax Band: D

H&H
BESPOKE



Welcome to Apt 6 Scholars Quarter, a stunning new build apartment located at 22 Legge Lane in the vibrant city of Birmingham. This contemporary residence offers a perfect blend of modern living and comfort.

The apartment features a spacious reception room, providing a welcoming space for relaxation and entertaining guests. With two well-appointed bedrooms, there is ample room for family or guests, ensuring everyone has their own private sanctuary. The property also boasts two stylish bathrooms, designed with modern fixtures and finishes, adding to the overall appeal of this exquisite apartment.

Built in 2025, this apartment benefits from the latest in construction standards and energy efficiency, ensuring a comfortable living environment year-round. The location on Legge Lane places you within easy reach of Birmingham's bustling city centre, with its array of shops, restaurants, and cultural attractions, making it a prime spot for urban living.

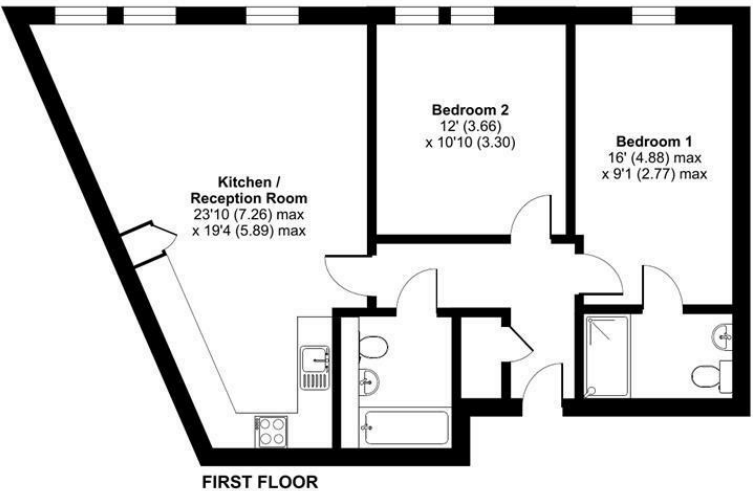
Whether you are seeking a chic city pad or a smart investment opportunity, Apt 6 Scholars Quarter is a property that should not be missed. Embrace the chance to own a piece of modern elegance in one of the



13 Sherrard Street, Melton Mowbray, Leicestershire, LE13 1XH
0333 242 3760
Beth@houseandhomebespoke.co.uk

Legge Lane, Birmingham, B1

Approximate Area = 798 sq ft / 74.1 sq m
For identification only - Not to scale



Floor plan produced in accordance with RICS Property Measurement 2nd Edition, Incorporating International Property Measurement Standards (IPMS2 Residential). ©rithecom 2025. Produced for House and Home Bespoke. REF: 1253044

Energy Efficiency Rating		
	Current	Potential
Very energy efficient - lower running costs		
(92 plus) A		
(81-91) B	82	82
(69-80) C		
(55-68) D		
(39-54) E		
(21-38) F		
(1-20) G		
Not energy efficient - higher running costs		
England & Wales	EU Directive 2002/91/EC	