



7 Evergreen Way, Staines-Upon-Thames, TW19 7UF

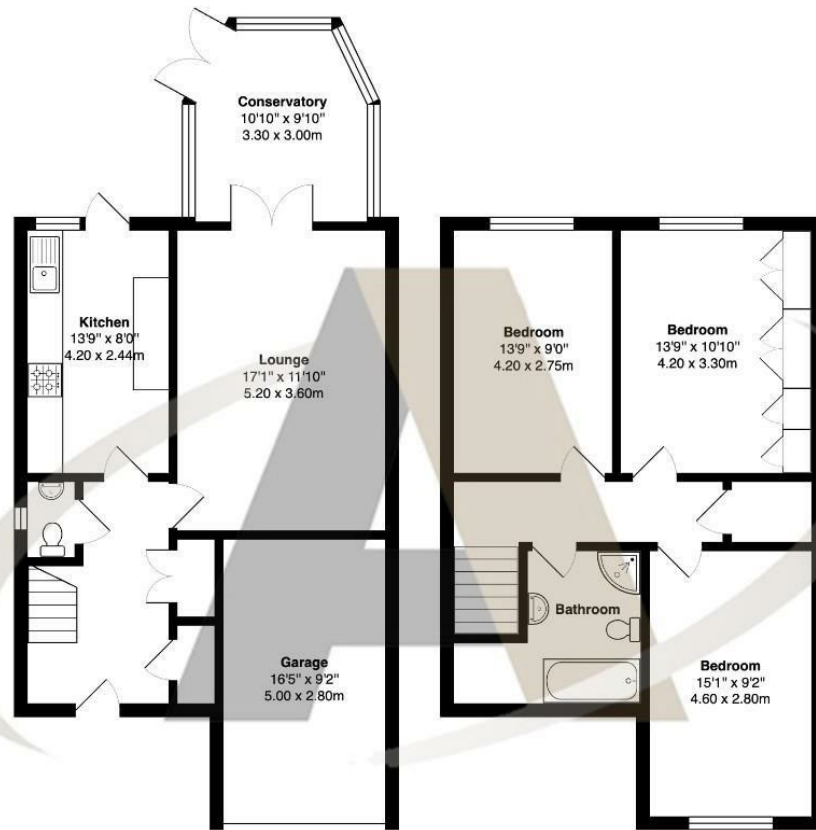
£2,500

7 Evergreen Way, Staines-Upon-Thames, TW19 7UF

Aspen Estate Agents are delighted to introduce this 3 bedroom end of terrace house to the market. Situated in the popular Evergreen Way this property should be viewed to appreciated. Upstairs there are three double bedrooms and large bathroom. Downstairs there is a large reception room with the addition of a conservatory with access on to the garden. The kitchen is a good size offering ample worktop space and plenty of storage. Other notable features of this property include an integral garage, a downstairs WC, three useful storage cupboards, a good-size rear garden, and off-road parking for 2 cars.



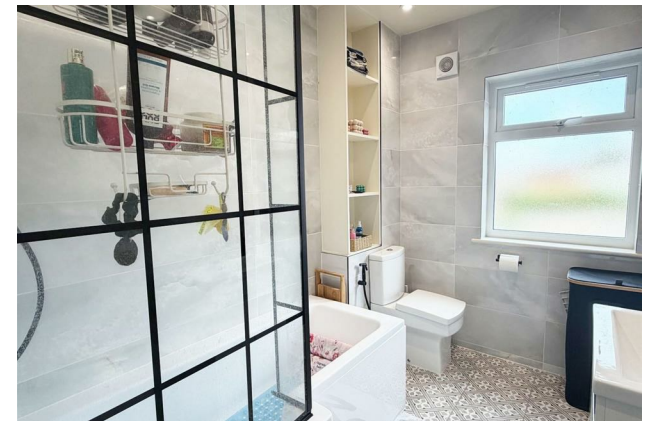
Floor Plan



Evergreen Way, Stanwell

Total Area: 1314 ft² ... 122.1 m²

All measurements are approximate and for display purposes only



Features

- 3 Double Bedrooms
- Off street parking for 2 cars
- Private Garden
- Available August 2026
- Garage
- Conservatory

Aspen Residential Services
 77 Church Road, Ashford, Surrey, TW15 2PE
 Tel: 01784 252 202
 Email: enquiries@aspensalesandlettings.com



Tenure - Council Tax Band - E

