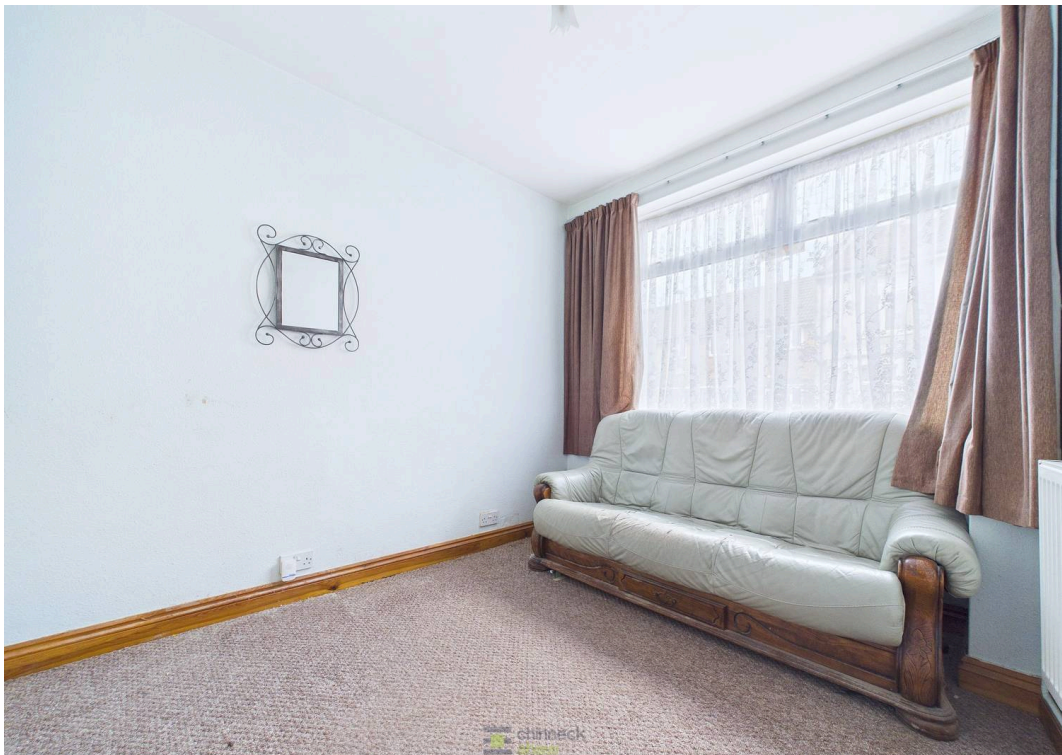




100 Bath Road, Southsea

Guide Price £265,000 - £275,000





100 Bath Road

Southsea

This well-proportioned two-bedroom terraced house in the heart of Southsea offers comfort, practicality and excellent potential. While some modernisation would enhance the property, it provides a solid foundation for buyers to create a home tailored to their tastes and needs. The bright, inviting living area is ideal for relaxing evenings or entertaining friends, while the versatile living accommodation can adapt to provide a home office, play area or hobby space. The kitchen is thoughtfully arranged for everyday dining and meal preparation, with good storage and workspace. A downstairs WC adds welcome convenience for busy mornings and visiting guests. Upstairs, two generous bedrooms provide natural light and flexibility for sleep, study or hobbies, with a family bathroom completing the first floor. Appealing to first-time buyers, professionals, growing families and investors, this home offers strong rental potential. With no onward chain, it is a fantastic opportunity in one of Southsea's most popular locations.

Material Information • Tenure: Freehold • Council Tax: Band A • Electricity: Mains Supply • Heating: Gas • Water Supply: Mains Supply • Sewage: Mains Supply • Broadband: Standard, Superfast and Ultrafast Fibre are all available in this area • Parking: On Street • Mobile: Ofcom official website checker states that EE, Vodafone, O2 and Three available in the area • Flood Risk: Low Risk





Ground Floor



Floor 1

Approximate total area⁽¹⁾
837 ft²
77.8 m²

(1) Excluding balconies and terraces

Calculations reference the RICS IPMS 3C standard. Measurements are approximate and not to scale. This floor plan is intended for illustration only.

GIRAFFE360





Chinneck Shaw

Bridge House, Milton Road, Portsmouth – PO3 6AN

023 9282 6731

hello@chinneckshaw.co.uk

www.chinneckshaw.co.uk/

Chinneck Shaw, Bridge House, Milton Road, PO3 6AN Consumer Protection from Unfair Trading Regulations 2008: These details are for guidance only and complete accuracy cannot be guaranteed. If there is any point which is of particular importance, verification should be obtained. The do not constitute a contract or part of a contract. All measurements are approximate. No guarantee can be given with regard to planning permissions or fitness for purpose. No apparatus, equipment, fixture or fitting has been tested. Items shown in the photographs are NOT necessarily included. Interested Parties are advised to check availability and make an appointment to view before travelling to see a property.