

Copse Hill West Wimbledon, SW20 0SP

Guide Price £1,200,000 Freehold



This three double bedroom, two bathroom 1920s semi-detached home offers a west-facing rear garden, garage with a recently updated solid cedar wood door, and excellent scope to extend (STPP), with no onward chain.

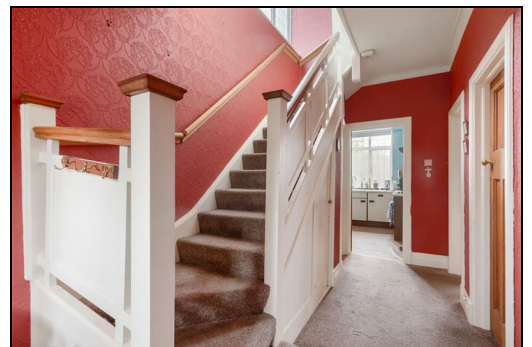
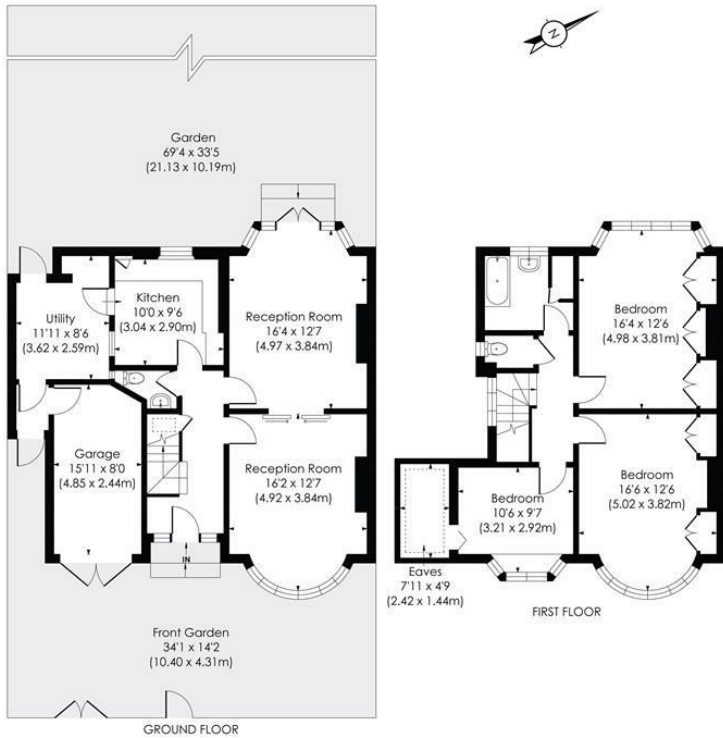
Ideally located on a sought after road close to Raynes Park Station, the High Street, Wimbledon Village, and well-regarded schools. The property features an entrance hall, two reception rooms, and kitchen on the ground floor, with three double bedrooms and a family bathroom upstairs. There are also double glazed windows throughout and gas fired central heating. A fantastic opportunity to create a long-term family home in a prime location.

COPSE HILL, SW20

Approx. Gross Internal Floor Area

1517 Sq. ft/140.93 Sq. m (Incl. Garage, Incl. RHH)

1480 Sq. ft/137.45 Sq. m (Incl. Garage, Excl. RHH)

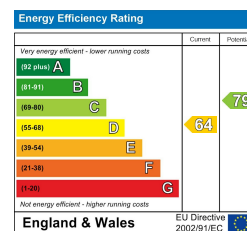


© Pixangle Property Marketing Ltd. info@pixangle.com Tel: 0208 870 2118



This floor plan has been prepared for the purpose of illustration only in accordance with the latest RICS code of measuring practice and is not to scale. All measurements and areas are approximate and whilst every effort has been made to ensure the accuracy of the plan contained here, no responsibility is taken for any error, omission or misstatement.

- Three Double Bedrooms
- Spacious 1920's Semi-Detached House
- West Facing Rear Garden
- Sought After Road Close To Well-Regarded Schools
- Easy Access To Wimbledon Village And Raynes Park Station
- In Need Of Updating
- Potential To Extend To The Loft And Rear S.T.P.P
- No Onward Chain
- EPC Rating - D
- Council Tax Band - F



For Free Mortgage Quote and Best Mortgage Rates, call Ellisons Mortgage Advisor on 0208 944 9595



Although these particulars are believed to be correct, their accuracy is not guaranteed and they do not form part of any contract.

Celebrating 30 years of successful Sales and Lettings in Merton

