



**Droxford Brady Road, Lyminge - CT18 8EU**  
**£725,000**

Approximate Gross Internal Area (Including Low Ceiling) = 166 sq m / 1787 sq ft  
Outbuildings / Garage = 23 sq m / 248 sq ft  
Total = 189 sq m / 2035 sq ft

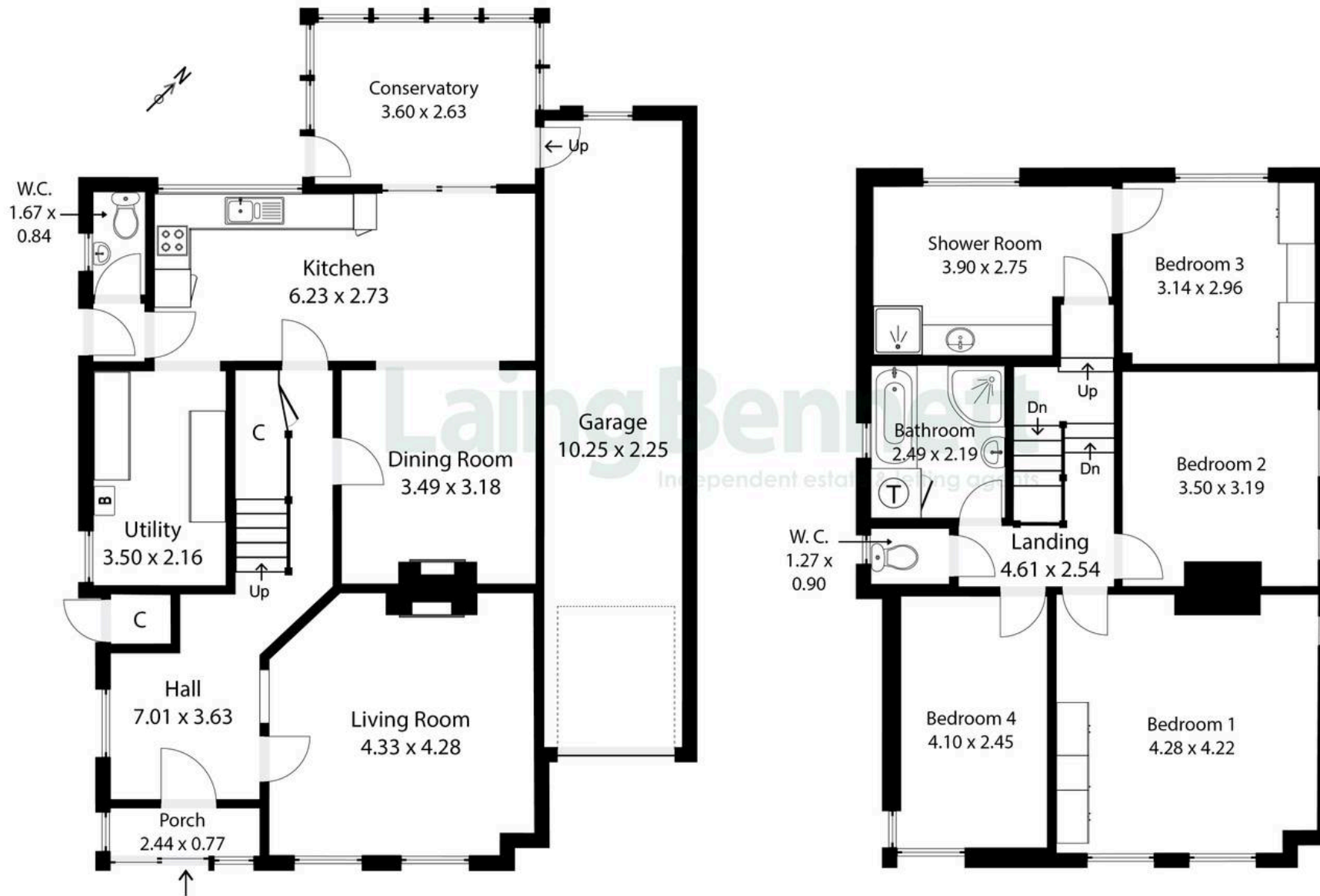


Illustration for Identification purposes only. Measurements are approximate. Dimensions given are between the widest points.  
Not to scale. Outbuildings are not shown in actual location.  
© Unauthorised reproduction prohibited



## Droxford Brady Road

Lyminge, Folkestone

A spacious four-bedroom period home set in a highly sought-after location within the popular village of Lyminge, offering a wonderful opportunity for a buyer to update and create a truly special family residence. This charming property boasts a wealth of character features throughout, providing a perfect blend of space and potential. Externally, the home benefits from a driveway, a long garage which offers potential for conversion subject to any planning permissions and an attractive, generously sized rear garden. The garden is a particular highlight, enjoying breathtaking panoramic countryside views to the rear, creating an idyllic setting for outdoor living and entertaining. No chain.

Council Tax band: F

Tenure: Freehold

EPC Energy Efficiency Rating: D

EPC Environmental Impact Rating:





**Laing  
Bennett**  
Independent estate & letting agents

## Laing Bennett

Laing Bennett Ltd, The Estate Office, 8 Station Road – CT18 8HP

01303 863393

[info@laingbennett.co.uk](mailto:info@laingbennett.co.uk)

[www.laingbennett.co.uk/](http://www.laingbennett.co.uk/)

DISCLAIMER – These details are for guidance only and do not form part of an offer or contract. Measurements are approximate. Laing Bennett Ltd and the Vendor/Landlord accept no liability. Services and appliances are untested. Applicants must make their own checks. Items shown may not be included. No staff have authority to give warranties.