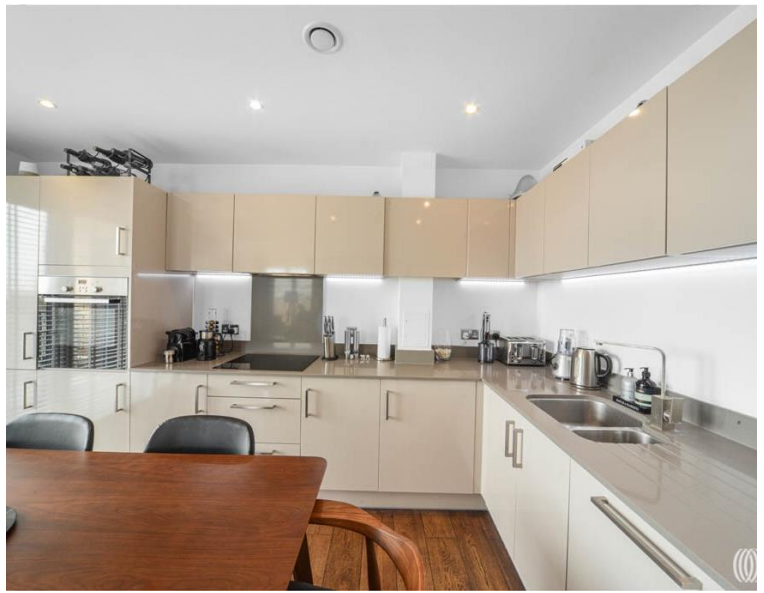


Prospect Row, London E15

£575,000 Leasehold







Description

Nestled in the heart of Stratford's ongoing transformation, the Mogul Building at Prospect East represents contemporary urban living at its finest. This modern development combines security with lifestyle amenities, offering residents bike storage, secure entry systems, and tranquil communal gardens that provide a peaceful retreat from city life.

This impressive two-bedroom two-bathroom apartment spans approximately 787 square feet of thoughtfully designed space across the seventh floor. The dual aspect layout floods the home with natural light, with east-facing bedrooms catching the morning sun and the living room opening onto a private south-facing balcony—perfect for enjoying your morning coffee or unwinding in the evening. Recent enhancements include brand new bedroom carpets and beautifully renovated wood flooring throughout, while sophisticated touches such as kitchen underlighting and built-in wardrobe storage add both functionality and elegance to everyday living.

The apartment benefits from the opportunity to rent secure underground parking. The main bedroom features generous built-in wardrobes with an additional fitted wardrobe included, ensuring ample storage throughout.

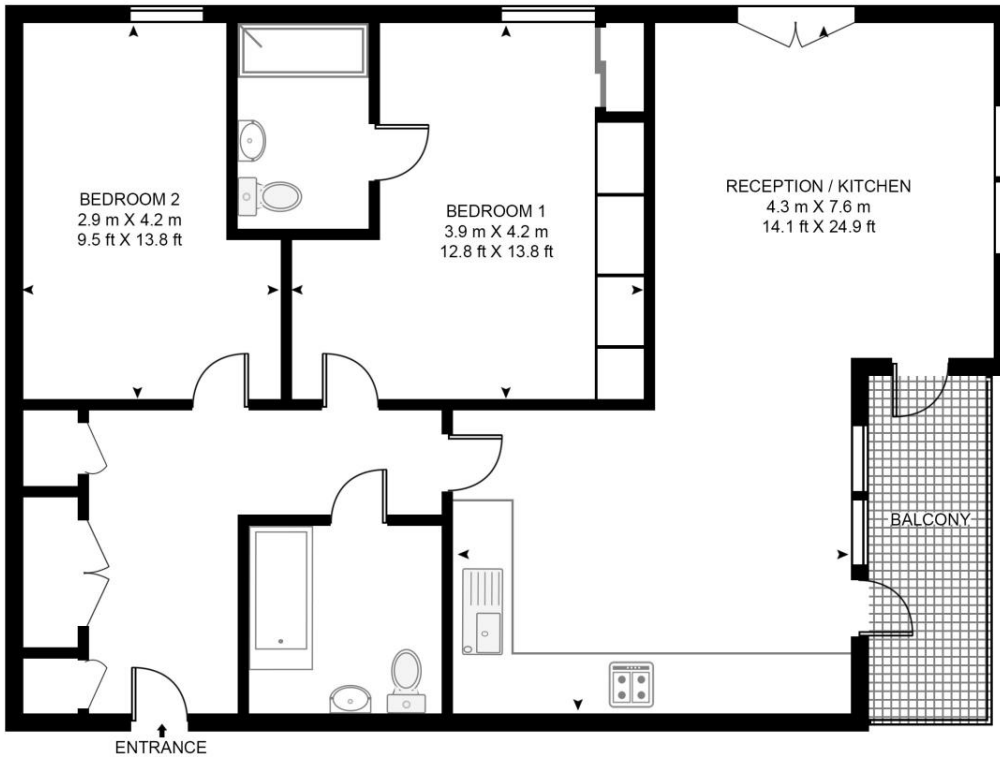
- East x South dual aspect layout
- Offered chain free
- Underfloor heating throughout
- 7th Floor with lift access
- Communal garden
- Secure underground parking available
- Private balcony
- Within a short walk from Stratford station and Westfield Shopping Centre
- EPC: B

Floorplan

787 sq ft | 73 sq m

MOGUL BUILDING

APPROXIMATE GROSS INTERNAL FLOOR AREA 787 SQ.FT (73.1 SQ.M)



SEVENTH FLOOR



This floor plan has been defined by the RICS Code of Measurement. This floor plan and all others are for approximate representative purposes only and upon usage is agreed to as such by the client.
WWW: hdvirtualart.com | TEL: 0203.974.1567 | EMAIL: info@hdvirtualart.com

Stratford
5 Station Street,
London E15 1DA
+4420 3147 1500
Lettingsstratford@eu.jll.com

Urban living, your way.

jll.co.uk/residential

© 2019 Jones Lang LaSalle IP, Inc. All rights reserved. All information contained herein is from sources deemed reliable; however, no representation or warranty is made to the accuracy thereof.

