

Boscombe Road, W12

£484 Per week

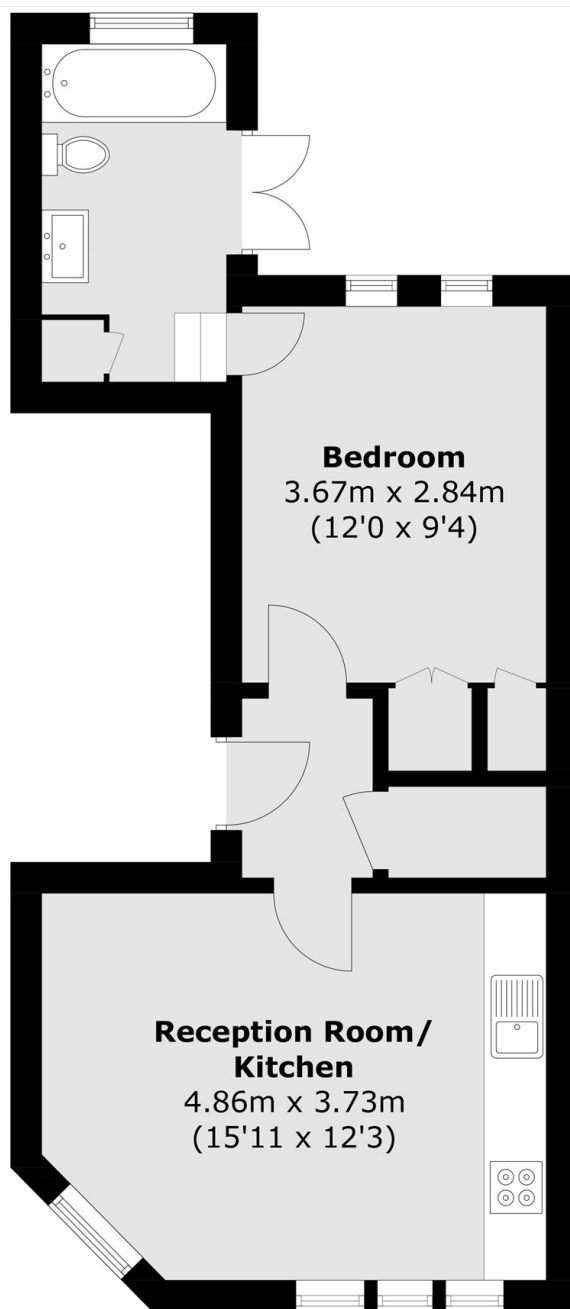
A beautifully presented one-bedroom first-floor apartment on sought-after Boscombe Road, W12, offering bright and stylish living space throughout. This exceptional home features a spacious reception room, a well-appointed modern kitchen, and a generous double bedroom, all finished to a high standard. A standout feature of the property is the stunning private roof terrace a rare and tranquil outdoor retreat, perfect for entertaining, relaxing, or enjoying al fresco dining. Ideally positioned close to excellent transport links, local amenities, and green spaces, this superb apartment combines comfort, character, and contemporary living in one of West London's most desirable locations.

Boscombe Road is ideally located in the heart of Shepherd's Bush, moments from the wide range of shops, cafés, restaurants, and amenities of Uxbridge Road and Westfield London. Excellent transport links are nearby, including Shepherd's Bush Market, Goldhawk Road, and Shepherd's Bush stations, providing easy access across Central London via the Central, Circle, Hammersmith & City, and Overground lines. The area also benefits from a number of popular green spaces, including Ravenscourt Park and Holland Park, all within easy reach.

Features

- Large One Bedroom
- Private Terrace
- Furnished
- Modern
- Fantastic Location

Boscombe Road, London, W12



First Floor

Total area (approx.): 40.2 sq. m (432.7 sq. ft)