



PAVILION SQUARE, SW17

£550,000

- Stylish modern flat
- Two double bedrooms
- Two family bathrooms
- Leasehold
- Loft storage
- Energy rating: B





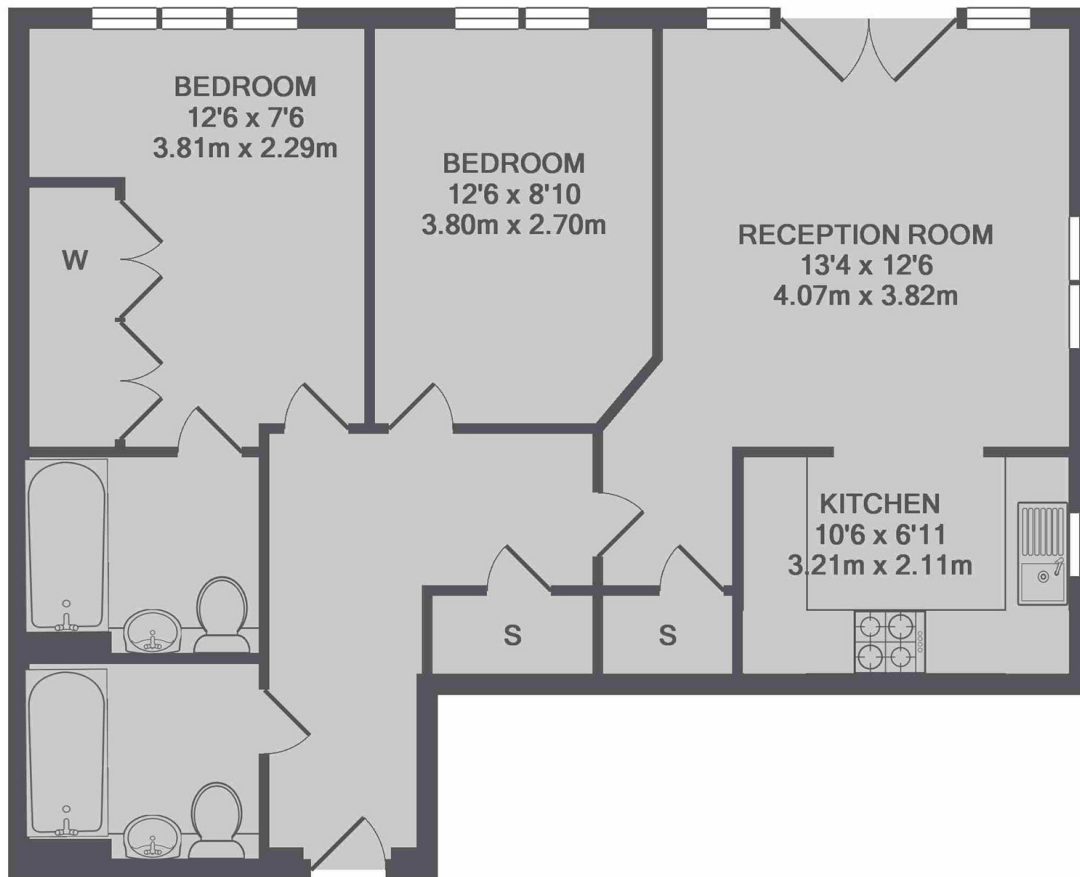
ABOUT THE HOME

A stylish two bedroom, two bathroom flat located in the sought after Pavilion Square. Spanning an impressive 740 sqft, this second floor flat offers large loft storage and a personal parking spot. The first of the bathrooms is located immediately left upon entering the flat, following the hallway the principle bedroom is located at the rear of the property, this generous double is equipped with fitted wardrobes and access to a family sized en suite. The second bedroom is found adjacent to the master, this room provides ample storage. This storage space continues into the reception area, a large space offering ample room for dining and relaxing. The kitchen is located in close proximity to this space with a stylish and modern finish.

This flat is located in Pavilion Square, a short walk from Tooting Bec station and the green open spaces of both Wandsworth Common and Tooting Bec Common. Additionally the development is a short walk to the shops, bars and restaurants that both of these areas have to offer.







TOTAL APPROX. FLOOR AREA 741 SQ.FT. (68.9 SQ.M.)

JACKSONS TOOTING

3 Upper Tooting Road, London,
SW17 7TS
Sales: 020 8487 3175
Lettings: 020 8487 3176

Energy Rating: We aim to make our particulars both accurate and reliable. However they are not guaranteed; nor do they form part of an offer or contract. If you require clarification on any points then please contact us, especially if you're traveling some distance to view. Please note that appliances and heating systems have not been tested and therefore no warranties can be given as to their good working order.