



Price

£210,000

Leasehold

1x  1x  1x 

Camelot Close,
Southwater, Horsham,
West Sussex, RH13

OVER 60?

Secure this property
for up to **59% less!**

cubitt & west
Helping you move forwards



Main features

- Presented in immaculate condition
- 2 allocated parking spaces
- Bright and spacious living area
- Walking distance to transport links and local schools
- 900+ year lease with no charges

Accommodation

FIRST FLOOR

Landing

Lounge: 11'6 x 11'6 (3.51m x 3.51m)

Kitchen: 11'9 x 6'11 (3.58m x 2.11m)

Bedroom 1: 14'10 x 11'9 (4.52m x 3.58m)

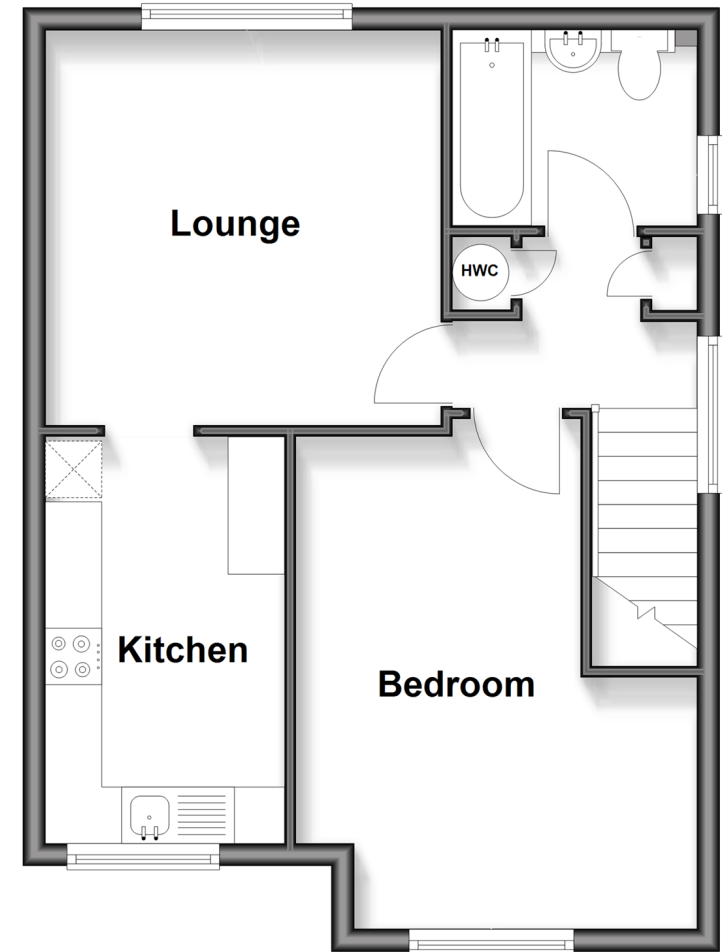
Bathroom

OUTSIDE

2 x Allocated Parking Spaces

First Floor

Approx. 43.9 sq. metres (472.8 sq. feet)



Call Southwater - 01403 731901 ■ cubittandwest.co.uk

- Legal advice should be taken to verify fixtures/fittings, planning, alterations and/or lease details
- Appliances & services are untested, dimensions are approximate and floor plans are not to scale
- Through a Homewise Home For Life Plan people aged 60+ can secure this property for up to 50% less, by purchasing a Lifetime Lease.



21909067/20251113/CR/DA